



APRIL 2008

6105.0

AUSTRALIAN LABOUR MARKET STATISTICS

EMBARGO: 11.30AM (CANBERRA TIME) FRI 4 APR 2008

CONTENTS

	page
Notes	2
Abbreviations	3

LABOUR MARKET OVERVIEW

Labour statistics news and upcoming statistical releases	4
Labour market summary	6

LABOUR MARKET DATA

List of tables	11
The labour force	13
International comparisons	24
Employed persons	25
Unemployed persons	36
Underutilised labour	39
Earnings/Labour costs	44
Industrial relations	47
Job vacancies	49

ADDITIONAL INFORMATION

Explanatory Notes	50
Appendix 1: Data sources for tables	58
Appendix 2: List of articles	62
Appendix 3: Related publications	65
Glossary	67

INQUIRIES

For further information about these and related statistics, contact the National Information and Referral Service on 1300 135 070 or Labour Market Statistics Section on Canberra (02) 6252 7206.

NOTES

FORTHCOMING ISSUES

ISSUE (Quarter)

RELEASE DATE

July 2008

4 July 2008

October 2008

3 October 2008

January 2009

16 January 2009

.....

DATA CONTAINED IN THIS ISSUE

The statistics shown are the latest available at 27 March 2008. Data sources for the tables in this publication are listed in Appendix 1.

ELECTRONIC PRODUCTS

The spreadsheets and data cubes referenced in this publication are available on the ABS website at <<http://www.abs.gov.au>> [Access to all ABS products & statistics – By Catalogue Number – 6. Labour Statistics and Prices].

INQUIRIES

For information about other Australian Bureau of Statistics (ABS) statistics and services, please refer to the back of this publication.

Brian Pink

Australian Statistician

ABBREVIATIONS

ABS	Australian Bureau of Statistics
ANZSCO	Australian and New Zealand Standard Classification of Occupations
ANZSIC	Australian and New Zealand Standard Industrial Classification
ASCO	Australian Standard Classification of Occupations
ASGC	Australian Standard Geographical Classification
ATO	Australian Taxation Office
AWE	average weekly earnings
EEH	Survey of Employee Earnings and Hours
ERP	estimated resident population
GDP	gross domestic product
ID	industrial disputes
ILO	International Labour Organization
JVS	Job Vacancies Survey
LFS	Labour Force Survey
LPI	labour price index
MPHS	Multi-Purpose Household Survey
MPS	Monthly Population Survey
qtr	quarter
RSE	relative standard error
SEE	Survey of Employment and Earnings
WPI	wage price index

LABOUR STATISTICS NEWS

LABOUR THEME PAGE	The ABS Labour Theme Page, available on the ABS website, provides a guide to the range of ABS statistics on the labour market, as well as links to the latest data released. To find the Theme Page, go to < http://www.abs.gov.au > [Themes – People – Labour].
SUPPLEMENTARY SURVEYS ON LABOUR TOPICS	The Monthly Population Survey comprises the Labour Force Survey and a range of supplementary surveys, which provide detailed information on a range of topics. Results from surveys on labour-related topics recently released include: Persons Not in the Labour Force, Australia (cat. no. 6220.0) and Underemployed Workers, Australia (cat. no. 6265.0). See the Recent Releases in this issue for more details.
MULTI-PURPOSE HOUSEHOLD SURVEY	The Multi Purpose Household Survey (MPHS) provides annual statistics for a number of small, self-contained topics, including a number of labour-related topics. Data for MPHS topics are collected each month over a financial year. A topic on retirement and retirement intentions was conducted in 2006–07. Results from this survey were released in January 2008 in Retirement and Retirement Intentions, Australia (cat. no. 6238.0).
UPDATE OF THE ANNUAL MEASURES OF LABOUR UNDERUTILISATION	<p>The annual measures of labour underutilisation have now been updated for 2007. The 2001 to 2006 data have also been updated using the new LFS method of composite estimation. The data for the annual headcount measures are presented in tables 4.1, 4.2 and 4.3 of this publication. A spreadsheet containing the headcount measures is available from the ABS website. To find the spreadsheet go to <http://www.abs.gov.au> [Statistics – By Catalogue Number – 6. Labour Statistics and Prices – 61. Labour statistics – general]. The spreadsheet is listed under the Details tab in this April 2008 issue of Australian Labour Market Statistics (cat. no. 6105.0).</p> <p>For more information on the new method of composite estimation, see Information Paper: Forthcoming Changes to Labour Force Survey Products, 2007 (cat. no. 6292.0).</p>
UPDATE OF TIME SERIES SPREADSHEETS	The Persons Not in the Labour Force Survey spreadsheets will be updated with 2007 data and released in April 2008. The spreadsheets provide a range of information on the characteristics of people not in the labour force such as their main activity while not in the labour force and the main reason they are not looking for work. To find the spreadsheets, go to the ABS website, click on 'Access to all ABS products and statistics' and search by catalogue number. The spreadsheets can be found under the details tab for Persons Not in the Labour Force, Australia, September 2007 (cat. no. 6220.0).
ABS EMAIL NOTIFICATION SERVICE	By subscribing to this free service, you will be kept informed via email of the latest releases of ABS products. To subscribe, follow the link from the ABS home page < http://www.abs.gov.au >, provide your email address, and select your topics of interest.

LABOUR STATISTICS NEWS *continued*

RECENT AND UPCOMING STATISTICAL RELEASES

<i>Release date/title of publication</i>	<i>Reference period</i>	<i>Catalogue number</i>
March 2008		
Australian Economic Indicators	(a) April 2008	1350.0
Employment in Sport and Recreation, Australia	August 2008	4148.0
Industrial Disputes, Australia	December quarter 2007	6321.0.55.001
Job Vacancies, Australia	February 2008	6354.0
Labour Force, Australia	February 2008	6202.0
Labour Force, Australia, Spreadsheets	February 2008	6202.0.55.001
Labour Force, Australia – Detailed Delivery, Monthly	February 2008	6291.0.55.001
Labour Force, Australia – Detailed Delivery, Quarterly	February 2008	6291.0.55.003
Persons Not in the Labour Force, Australia	September 2007	6220.0
Survey of Education and Work, Australia – Confidentialised Unit Record File on CD-ROM	May 2007	6227.0.30.001
Technical Manual: Survey of Education and Work, Australia – Confidentialised Unit Record File	May 2007	6227.0.30.002
April 2008		
Australian Economic Indicators	(a) May 2008	1350.0
Australian Labour Market Statistics	(a) April 2008	6105.0
Employee Earnings, Benefits and Trade Union Membership, Australia	August 2007	6310.0
Forms of Employment, Australia	November 2007	6359.0
Labour Force, Australia	March 2008	6202.0
Labour Force, Australia, Spreadsheets	March 2008	6202.0.55.001
Labour Force, Australia – Detailed Delivery, Monthly	March 2008	6291.0.55.001
Measures of Australia's Progress: At A Glance	(a) 2008	1383.0.55.002
Measures of Australia's Progress: Summary	(a) 2008	1383.0.55.001
Regional Wage and Salary Earner Statistics, Australia – Data Cubes	2004–05	5673.0.55.003
May 2008		
Australian Economic Indicators	(a) June 2008	1350.0
Average Weekly Earnings, Australia	February 2008	6302.0
Household Expenditure Survey and Survey of Income and Housing – Confidentialised Unit Record Files (Third Edition)	2003–04	6540.0
Household Expenditure Survey and Survey of Income and Housing – Confidentialised Unit Record Files, Technical manual (Third Edition)	2003–04	6540.0.00.001
Improvements to Family Estimates from the Labour Force Survey	(a) 2008	6224.0.55.002
Labour Force, Australia	April 2008	6202.0
Labour Force, Australia, Spreadsheets	April 2008	6202.0.55.001
Labour Force, Australia – Detailed Delivery, Monthly	April 2008	6291.0.55.001
Labour Force Status and Other Characteristics of Migrants, Australia	November 2007	6 250
Labour Price Index	March 2008	6345.0
Labour Statistics in Brief	(a) 2008	6104.0
Survey of Income and Housing–Confidentialised Unit Record Files on CD-ROM/RADL	2005–06	6541.0.30.001
Survey of Income and Housing – Confidentialised Unit Record Files, Technical Manual	2005–06	6541.0
June 2008		
Australian Economic Indicators	(a) July 2008	1350.0
Industrial Disputes, Australia	March quarter 2008	6321.0.55.001
Job Vacancies, Australia	May 2008	6354.0
Labour Force, Australia	May 2008	6202.0
Labour Force, Australia, Spreadsheets	May 2008	6202.0.55.001
Labour Force, Australia – Detailed Delivery, Monthly	May 2008	6291.0.55.001
Labour Force, Australia – Detailed Delivery, Quarterly	May 2008	6291.0.55.003
Labour Force Status and Other Characteristics of Migrants, Australia – Confidentialised Unit Record File on CD-ROM	November 2007	6250.0.25.002
July 2008		
Australian Economic Indicators	(a) August 2008	1350.0
Australian Labour Market Statistics	(a) July 2008	6105.0
Australian Social Trends	(a) 2008	4102.0
Labour Force, Australia	June 2008	6202.0
Labour Force, Australia, Spreadsheets	June 2008	6202.0.55.001
Labour Force, Australia – Detailed Delivery, Monthly	June 2007	6291.0.55.001
Labour Force, Australia–Labour Force Status and Other Characteristics of Families, Electronic Delivery	June 2008	6224.0.55.001

(a) Refers to the issue of the publication, not the reference period.

LABOUR MARKET SUMMARY

KEY MEASURES

				% CHANGE FROM		
				Previous	Previous	
				quarter(a)	year(b)	
Measure		Series type	Period	Current figure		
Employed						
Persons	'000	Trend	Feb 2008	10 649.7	0.7	2.7
Full-time	'000	Trend	Feb 2008	7 617.4	0.5	2.6
Part-time	'000	Trend	Feb 2008	3 032.3	1.2	2.9
Part-time employment as a proportion of total employment	%	Trend	Feb 2008	28.5	(c)0.1	(c)0.1
Unemployed						
Persons	'000	Trend	Feb 2008	456.0	-3.6	-6.4
Looking for full-time work	'000	Trend	Feb 2008	303.3	-3.7	-11.5
Looking for part-time work	'000	Trend	Feb 2008	152.7	-3.3	5.7
Unemployment rate						
Persons	%	Trend	Feb 2008	4.1	(c)-0.2	(c)-0.4
Long-term unemployment						
Persons	'000	Trend	Feb 2008	69.7	0.2	-14.4
As a proportion of total unemployment	%	Trend	Feb 2008	15.3	(c)0.6	(c)-1.4
Annual labour underutilisation rates(d)						
Long-term unemployment rate	%	Original	Sep 2007	0.7	na	(c)-0.2
Unemployment rate	%	Original	Sep 2007	4.2	na	(c)-0.5
Underemployment rate	%	Original	Sep 2007	4.7	na	(c)-0.3
Labour force underutilisation rate	%	Original	Sep 2007	8.9	na	(c)-0.8
Extended labour force underutilisation rate	%	Original	Sep 2007	9.9	na	(c)-0.6
Children living without an employed parent(e)	%	Original	Jun 2007	13.7	na	(c)-0.7
Labour force participation rate						
Persons aged 15-64 years	%	Original	Feb 2008	76.6	(c)0.5	(c)0.2
Total	%	Trend	Feb 2008	65.2	(c)0.1	(c)0.3
Actual hours worked						
Aggregate weekly hours	mill. hours	Original	Feb 2008	369.8	1.7	2.7
Average weekly hours - Persons	hours	Original	Feb 2008	34.8	1.0	-0.3
Average weekly hours - Full-time	hours	Original	Feb 2008	41.6	0.4	-0.5
Average weekly hours - Part-time	hours	Original	Feb 2008	17.2	2.8	1.4
Part-time workers						
Proportion who preferred to work more hours	%	Original	Feb 2008	23.2	(c)0.1	(c)-1.5
Wage price index						
Total hourly rates of pay excluding bonuses	index no.	Original	Dec qtr 2007	116.5	1.0	4.2
Average weekly earnings						
Full-time adult ordinary time earnings	\$	Trend	Nov 2007	1 112.70	1.0	4.9
All employees total earnings	\$	Trend	Nov 2007	880.30	0.7	3.8
Compensation of employees						
Household income account	\$m	Trend	Dec qtr 2007	133 468	1.6	8.3
Average earnings (National Accounts basis nominal) per week	\$	Trend	Dec qtr 2007	1 100	0.9	5.4
Industrial disputes						
Working days lost	'000	Original	Dec qtr 2007	24.4	115.7	-55.0
Working days lost per 1,000 employees	number	Original	Dec qtr 2007	2.6	112.2	-56.3
Job vacancies						
Australia	'000	Trend	Feb 2008	180.3	1.3	10.4

na not available

(a) Same period previous quarter (monthly data is presented for the middle month of each quarter).

(b) Same period previous year.

(c) Change is in percentage points.

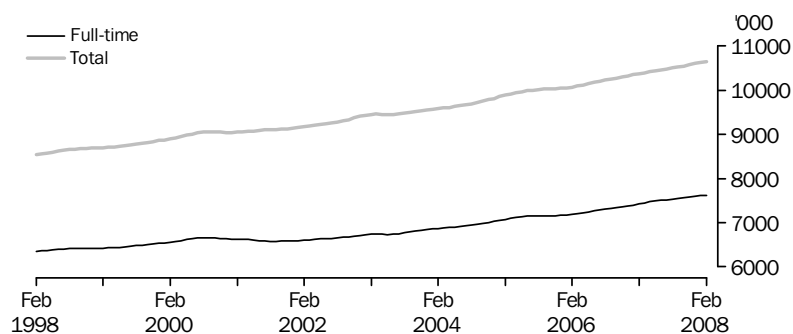
(d) See table 4.1 or the Glossary for further explanation of labour underutilisation rates.

(e) As a proportion of all children aged under 15 years. See the Explanatory Notes for information on family data.

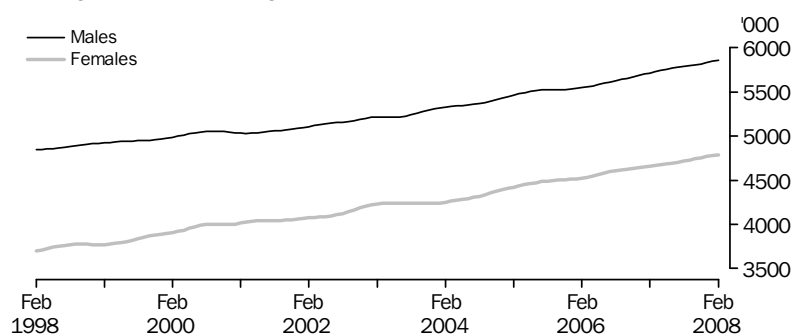
LABOUR MARKET SUMMARY *continued*

EMPLOYMENT: TREND SERIES

FULL-TIME AND TOTAL EMPLOYMENT

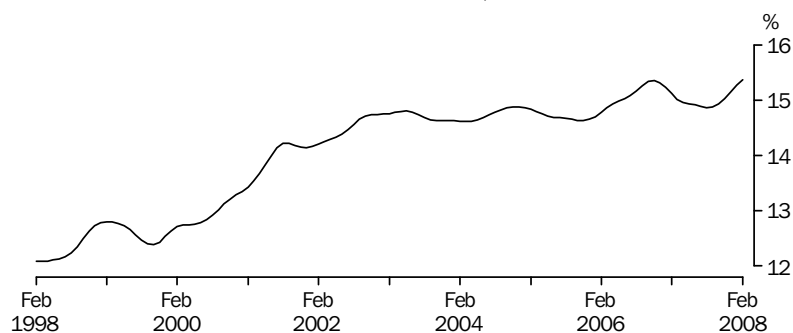


MALES AND FEMALES

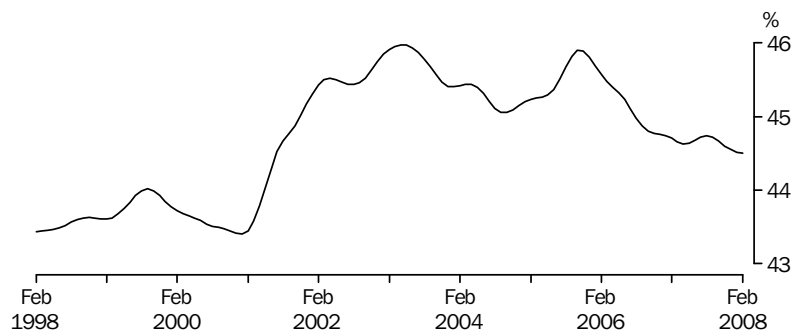


PART-TIME EMPLOYMENT: TREND SERIES

PROPORTION OF TOTAL EMPLOYMENT, Males



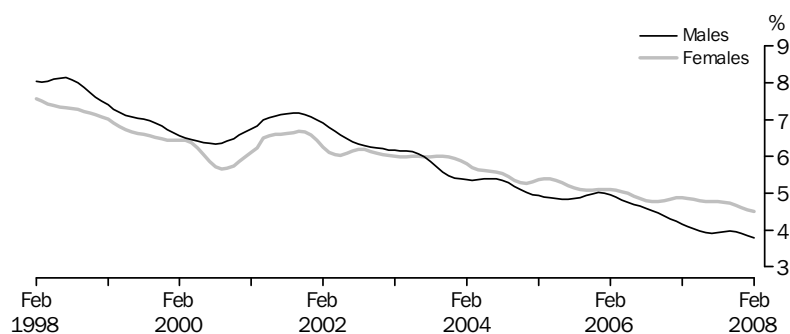
PROPORTION OF TOTAL EMPLOYMENT, Females



LABOUR MARKET SUMMARY *continued*

UNEMPLOYMENT RATE:
TREND SERIES

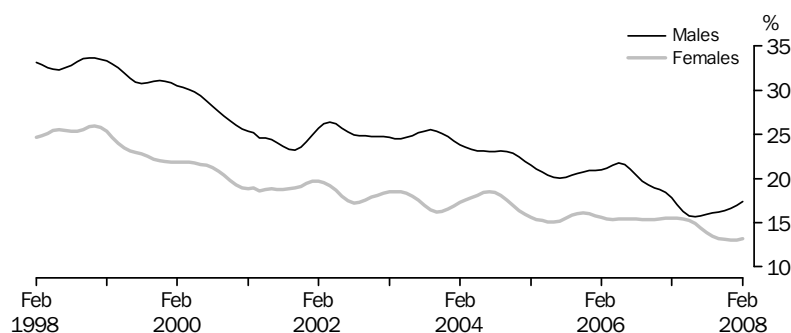
MALES AND FEMALES



Source: Labour Force Survey.

LONG-TERM
UNEMPLOYMENT: TREND
SERIES

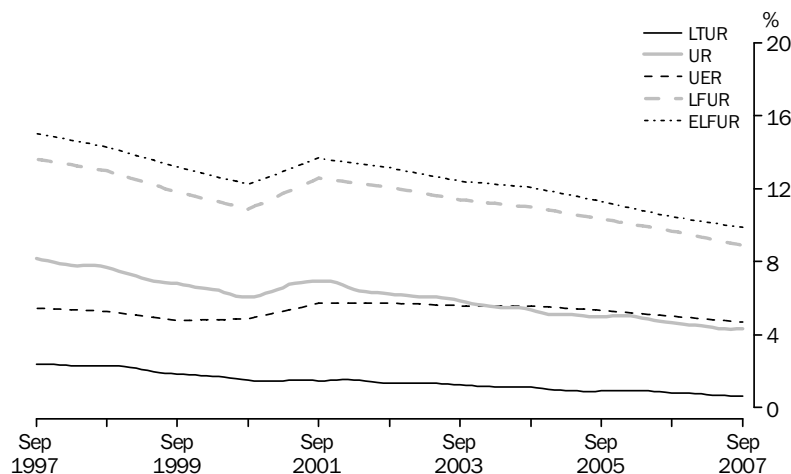
PROPORTION OF TOTAL UNEMPLOYMENT



Source: Labour Force Survey.

UNDERUTILISED LABOUR

LABOUR UNDERUTILISATION RATES—1997–2007



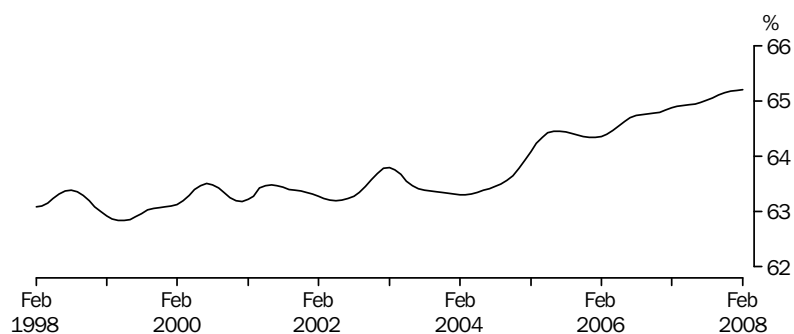
Notes: LTUR — long-term unemployment rate (trend)
UR — unemployment rate (trend)
UER — underemployment rate (original)
LFUR — labour force underutilisation rate (original)
ELFUR — extended labour force underutilisation rate (original)
See table 4.1 or the Glossary for further information on the labour underutilisation rates.

Source: Labour Force Survey, Underemployed Workers, and Persons Not in the Labour Force Surveys.

LABOUR MARKET SUMMARY *continued*

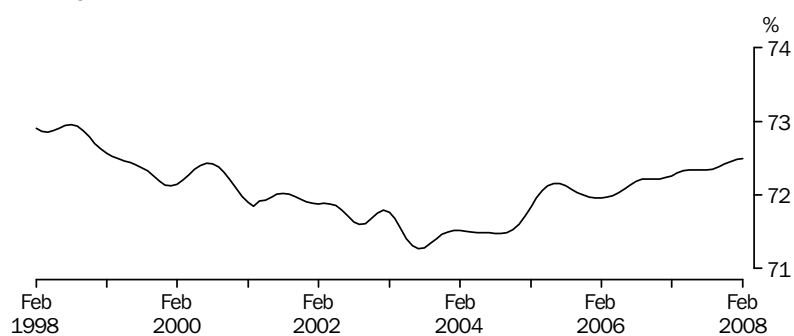
PARTICIPATION RATE:
TREND SERIES

PERSONS



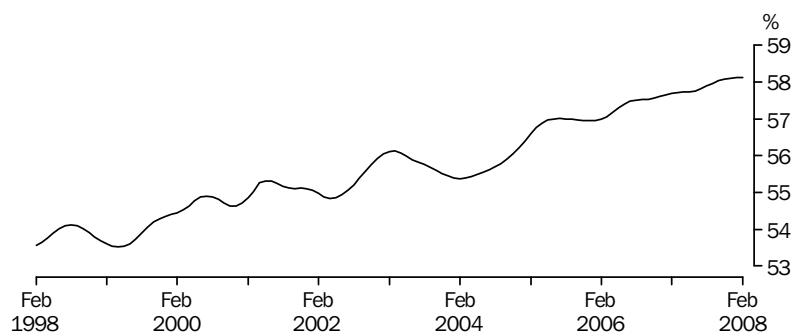
Source: Labour Force Survey.

MALES



Source: Labour Force Survey.

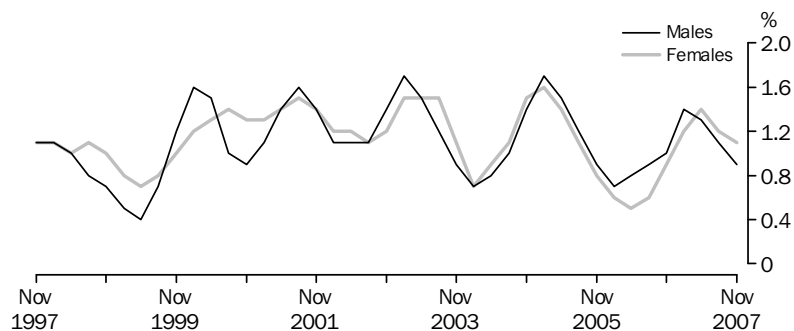
FEMALES



Source: Labour Force Survey.

AVERAGE WEEKLY
EARNINGS: TREND
SERIES

FULL-TIME ADULT ORDINARY TIME EARNINGS, Quarterly change

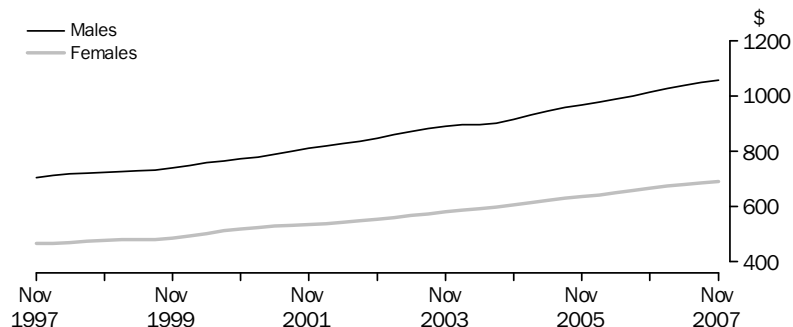


Source: Survey of Average Weekly Earnings.

LABOUR MARKET SUMMARY *continued*

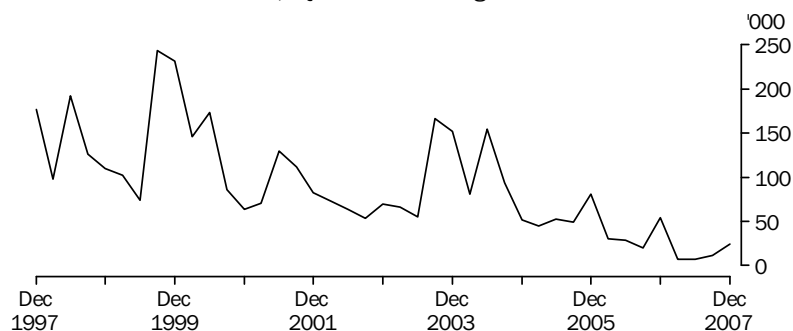
AVERAGE WEEKLY
EARNINGS: TREND
SERIES *continued*

ALL EMPLOYEES TOTAL EARNINGS, Level



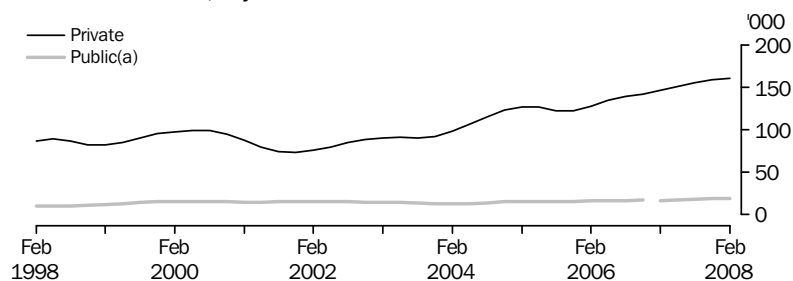
INDUSTRIAL DISPUTES:
ORIGINAL SERIES

WORKING DAYS LOST, Quarter ending



JOB VACANCIES: TREND
SERIES

JOB VACANCIES, by Sector



LIST OF TABLES

page

THE LABOUR FORCE

1.1	Labour force status: trend series	13
1.2	Age by social marital status	14
1.3	States and territories, and capital cities	17
1.4	Educational attendance (aged 15–24)	20
1.5	Country of birth by year of arrival in Australia	21
1.6	Relationship in household	22
1.7	All families: family type by labour force status	23
1.8	International comparisons	24

EMPLOYED PERSONS

2.1	Industry: trend series	25
2.2	Industry division and subdivision	26
2.3	Occupation major groups and sub-major groups	28
2.4	Industry and occupation by full-time/part-time status	29
2.5	Industry and occupation by status in employment	30
2.6	Actual hours worked: industry and occupation	31
2.7	Actual hours worked	32
2.8	Actual and usual hours worked	33
2.9	Full-time workers who worked less than 35 hours	33
2.10	Future employment expectations by job tenure	34
2.11	Public sector employees	35

UNEMPLOYED PERSONS

3.1	Duration of unemployment by age	36
3.2	Long-term unemployed persons: trend series	37
3.3	Reason for unemployment by industry and occupation of last job	38

UNDERUTILISED LABOUR

4.1	Labour underutilisation: population counts and rates	39
4.2	Labour underutilisation: age	40
4.3	Labour underutilisation: states and territories	41
4.4	Part-time workers: whether preferred to work more hours	42
4.5	Persons not in the labour force: whether looking for work	43

EARNINGS/LABOUR COSTS

5.1	Wage price index	44
5.2	Average weekly earnings: trend series	45
5.3	Compensation of employees and related measures: trend series	46

LIST OF TABLES *continued*

page

INDUSTRIAL RELATIONS

- 6.1** Industrial disputes: working days lost 47
6.2 Industrial disputes: working days lost per 1,000 employees 48

JOB VACANCIES

- 7.1** Job vacancies 49

LABOUR FORCE STATUS (AGED 15 AND OVER): Trend

Month	EMPLOYED			UNEMPLOYED						CHANGE IN EMPLOYED(a)			CHANGE IN RATE(a)	
	Full-time	Part-time	Total	Looking for f/t work	Looking for p/t work	Total	Labour force	Unemployment rate	Participation rate	Full-time	Part-time	Total	Unemployment rate	Participation rate
'000	'000	'000	'000	'000	'000	'000	'000	%	%	%	%	%	% pts	% pts
MALES														
February 2003	4 447.3	770.3	5 217.6	281.4	61.1	342.6	5 560.2	6.2	71.8	1.5	6.2	2.2	-0.7	-0.1
February 2004	4 547.8	779.2	5 327.0	245.9	56.2	302.0	5 629.0	5.4	71.5	2.3	1.2	2.1	-0.8	-0.3
February 2005	4 650.5	810.3	5 460.8	225.3	57.8	283.1	5 743.9	4.9	71.8	2.3	4.0	2.5	-0.4	0.3
2006														
February	4 726.2	819.9	5 546.0	226.5	63.2	289.7	5 835.8	5.0	72.0	0.2	1.4	0.3	0.0	0.0
May	4 746.6	837.1	5 583.7	220.0	58.5	278.4	5 862.1	4.7	72.0	0.4	2.1	0.7	-0.2	0.1
August	4 772.5	853.2	5 625.7	213.9	57.2	271.2	5 896.9	4.6	72.2	0.5	1.9	0.8	-0.2	0.2
November	4 797.7	870.9	5 668.6	205.4	54.4	259.7	5 928.3	4.4	72.2	0.5	2.1	0.8	-0.2	0.0
2007														
February	4 850.1	864.4	5 714.5	198.0	50.3	248.3	5 962.8	4.2	72.3	1.1	-0.7	0.8	-0.2	0.0
May	4 898.0	860.1	5 758.1	186.8	51.4	238.2	5 996.3	4.0	72.3	1.0	-0.5	0.8	-0.2	0.1
August	4 925.9	860.2	5 786.2	180.4	55.9	236.3	6 022.4	3.9	72.3	0.6	0.0	0.5	0.0	0.0
November	4 944.6	874.8	5 819.4	182.4	57.1	239.6	6 059.0	4.0	72.4	0.4	1.7	0.6	0.0	0.1
2008														
February	4 959.8	901.2	5 861.0	175.8	54.7	230.5	6 091.4	3.8	72.5	0.3	3.0	0.7	-0.2	0.1
FEMALES														
February 2003	2 289.3	1 943.2	4 232.6	175.5	94.5	270.0	4 502.6	6.0	56.1	3.0	5.0	3.9	-0.3	1.1
February 2004	2 320.2	1 930.6	4 250.8	162.7	98.6	261.3	4 512.1	5.8	55.4	1.3	-0.6	0.4	-0.2	-0.7
February 2005	2 422.3	2 000.7	4 423.0	157.1	93.5	250.5	4 673.6	5.4	56.6	4.4	3.6	4.1	-0.4	1.2
2006														
February	2 460.9	2 060.6	4 521.5	148.6	94.2	242.8	4 764.3	5.1	57.0	0.9	-0.3	0.3	0.0	0.0
May	2 496.1	2 069.2	4 565.3	142.9	96.8	239.7	4 805.0	5.0	57.3	1.4	0.4	1.0	-0.1	0.3
August	2 535.1	2 072.3	4 607.4	142.0	90.2	232.2	4 839.6	4.8	57.5	1.6	0.1	0.9	-0.2	0.2
November	2 557.0	2 073.1	4 630.1	146.5	87.0	233.4	4 863.6	4.8	57.6	0.9	0.0	0.5	0.0	0.0
2007														
February	2 575.0	2 081.7	4 656.8	144.7	94.1	238.8	4 895.6	4.9	57.7	0.7	0.4	0.6	0.1	0.1
May	2 591.9	2 089.8	4 681.7	142.3	93.4	235.8	4 917.4	4.8	57.7	0.7	0.4	0.5	-0.1	0.0
August	2 605.8	2 110.0	4 715.8	139.6	96.6	236.3	4 952.1	4.8	57.9	0.5	1.0	0.7	0.0	0.2
November	2 635.6	2 121.9	4 757.5	132.5	100.8	233.3	4 990.8	4.7	58.1	1.1	0.6	0.9	-0.1	0.2
2008														
February	2 657.6	2 131.1	4 788.8	127.5	98.0	225.5	5 014.2	4.5	58.1	0.8	0.4	0.7	-0.2	0.0
PERSONS														
February 2003	6 736.7	2 713.5	9 450.2	456.9	155.7	612.6	10 062.8	6.1	63.8	2.0	5.3	3.0	-0.5	0.5
February 2004	6 868.0	2 709.8	9 577.8	408.5	154.8	563.3	10 141.2	5.6	63.3	1.9	-0.1	1.4	-0.5	-0.5
February 2005	7 072.8	2 811.1	9 883.8	382.4	151.3	533.7	10 417.5	5.1	64.1	3.0	3.7	3.2	-0.4	0.8
2006														
February	7 187.1	2 880.4	10 067.5	375.1	157.4	532.6	10 600.1	5.0	64.4	0.4	0.1	0.3	0.0	0.0
May	7 242.7	2 906.3	10 149.0	362.9	155.3	518.2	10 667.2	4.9	64.6	0.8	0.9	0.8	-0.2	0.2
August	7 307.6	2 925.5	10 233.1	355.9	147.4	503.3	10 736.4	4.7	64.7	0.9	0.7	0.8	-0.2	0.2
November	7 354.7	2 944.0	10 298.7	351.8	141.3	493.2	10 791.9	4.6	64.8	0.6	0.6	0.6	-0.1	0.0
2007														
February	7 425.2	2 946.1	10 371.3	342.7	144.4	487.1	10 858.4	4.5	64.9	1.0	0.1	0.7	-0.1	0.1
May	7 489.9	2 949.9	10 439.7	329.1	144.9	474.0	10 913.7	4.3	64.9	0.9	0.1	0.7	-0.1	0.1
August	7 531.8	2 970.2	10 502.0	320.0	152.6	472.5	10 974.5	4.3	65.0	0.6	0.7	0.6	0.0	0.1
November	7 580.2	2 996.7	10 576.9	315.0	157.9	472.8	11 049.7	4.3	65.1	0.6	0.9	0.7	0.0	0.1
2008														
February	7 617.4	3 032.3	10 649.7	303.3	152.7	456.0	11 105.7	4.1	65.2	0.5	1.2	0.7	-0.2	0.1

(a) Change is calculated from the middle month of the previous quarter for the nine most recent quarters, and from the corresponding month of the previous year for earlier periods.

Source: Labour Force Survey. See Appendix 1.

Age group (years)	EMPLOYED			UNEMPLOYED			Labour force	Not in the labour force	Civilian population	Unemployment rate	Participation rate
	Full-time	Part-time	Total	Looking for f/t work	Looking for p/t work	Total					
	'000	'000	'000	'000	'000	'000	'000	'000	'000	%	%
MALES											
Married											
15–19	6.4	*1.9	8.3	*2.1	*—	*2.1	10.4	*0.5	10.9	*19.8	95.0
20–24	122.5	13.1	135.5	*4.4	*0.5	*4.8	140.4	11.3	151.6	*3.4	92.6
25–29	304.0	17.0	321.0	10.1	*0.9	11.0	332.0	12.9	344.9	3.3	96.3
30–34	433.7	27.1	460.7	*5.1	*2.2	7.3	468.0	16.7	484.7	1.6	96.6
35–39	517.2	35.8	553.0	5.3	*1.0	6.3	559.3	26.6	585.9	1.1	95.5
40–44	492.9	31.8	524.6	8.9	*2.0	10.9	535.5	38.0	573.5	2.0	93.4
45–49	512.0	35.9	547.9	5.8	*1.0	6.9	554.8	31.6	586.4	1.2	94.6
50–54	431.4	36.4	467.8	7.6	*0.9	8.5	476.3	48.5	524.8	1.8	90.8
55–59	335.0	49.0	384.0	7.9	*2.0	9.9	393.9	95.8	489.8	2.5	80.4
60–64	191.9	57.1	249.1	*3.8	*1.8	5.5	254.6	192.6	447.2	2.2	56.9
65–69	58.5	42.2	100.7	*0.4	*0.7	*1.1	101.7	228.6	330.4	*1.1	30.8
70 and over	18.9	30.4	49.2	*—	*0.2	*0.2	49.4	556.5	606.0	*0.4	8.2
15–64	3 347.0	305.1	3 652.0	60.9	12.2	73.2	3 725.2	474.5	4 199.7	2.0	88.7
Total	3 424.3	377.7	3 801.9	61.3	13.1	74.4	3 876.4	1 259.6	5 136.0	1.9	75.5
Not Married											
15–19	179.1	204.6	383.8	28.4	29.0	57.4	441.2	284.2	725.4	13.0	60.8
20–24	353.6	121.5	475.1	30.6	7.3	37.8	513.0	89.1	602.1	7.4	85.2
25–29	277.9	44.9	322.8	16.6	*2.8	19.4	342.2	49.0	391.2	5.7	87.5
30–34	171.6	20.2	191.9	11.1	*2.0	13.1	205.0	31.2	236.2	6.4	86.8
35–39	136.2	14.4	150.6	7.7	*1.3	9.0	159.6	28.8	188.4	5.6	84.7
40–44	116.2	15.8	132.1	6.9	*0.6	7.5	139.5	32.1	171.6	5.4	81.3
45–49	114.1	16.4	130.6	5.6	*0.9	6.4	137.0	39.9	176.9	4.7	77.5
50–54	94.8	16.7	111.5	*5.1	*0.7	5.8	117.4	43.6	160.9	5.0	72.9
55–59	73.5	12.8	86.3	5.8	*0.7	6.5	92.7	57.2	150.0	7.0	61.8
60–64	35.5	8.0	43.5	*2.7	*0.3	*3.0	46.4	62.1	108.6	*6.4	42.8
65–69	10.8	8.3	19.2	*0.8	*—	*0.8	20.0	62.8	82.8	*4.0	24.1
70 and over	*4.0	*4.7	8.7	*—	*0.7	*0.7	9.4	268.8	278.2	*7.0	3.4
15–64	1 552.7	475.5	2 028.2	120.4	45.5	166.0	2 194.1	717.2	2 911.3	7.6	75.4
Total	1 567.5	488.6	2 056.1	121.2	46.2	167.4	2 223.5	1 048.8	3 272.3	7.5	67.9
Total											
15–19	185.5	206.6	392.1	30.4	29.0	59.5	451.6	284.7	736.3	13.2	61.3
20–24	476.1	134.6	610.7	34.9	7.7	42.7	653.3	100.4	753.7	6.5	86.7
25–29	581.9	61.9	643.8	26.7	*3.8	30.4	674.3	61.8	736.1	4.5	91.6
30–34	605.3	47.3	652.6	16.2	*4.2	20.4	673.0	47.9	720.9	3.0	93.4
35–39	653.4	50.2	703.6	13.0	*2.3	15.3	718.9	55.4	774.3	2.1	92.8
40–44	609.1	47.6	656.7	15.8	*2.6	18.4	675.1	70.1	745.1	2.7	90.6
45–49	626.1	52.4	678.5	11.4	*1.9	13.3	691.8	71.4	763.2	1.9	90.6
50–54	526.2	53.1	579.3	12.7	*1.6	14.3	593.7	92.1	685.8	2.4	86.6
55–59	408.5	61.8	470.3	13.7	*2.7	16.4	486.7	153.1	639.8	3.4	76.1
60–64	227.4	65.1	292.5	6.4	*2.0	8.5	301.0	254.7	555.8	2.8	54.2
65–69	69.3	50.6	119.8	*1.2	*0.7	*1.9	121.7	291.5	413.2	*1.5	29.5
70 and over	22.8	35.1	58.0	*—	*0.8	*0.8	58.8	825.4	884.2	*1.4	6.7
15–64	4 899.6	780.6	5 680.2	181.3	57.8	239.1	5 919.3	1 191.6	7 111.0	4.0	83.2
Total	4 991.7	866.3	5 858.0	182.5	59.3	241.8	6 099.9	2 308.5	8 408.3	4.0	72.5
Mean age	39.9	37.2	39.5	33.5	27.5	32.1	39.2	57.0	44.1
Median age	39	32	39	29	20	27	39	64	43

* estimate is subject to sampling variability too high for most practical purposes

— nil or rounded to zero (including null cells)

. . not applicable

Source: Labour Force Survey. See Appendix 1.

Age group (years)	EMPLOYED			UNEMPLOYED			Labour force	Not in the labour force	Civilian population	Unemployment rate	Participation rate
	Full-time	Part-time	Total	Looking for f/t work	Looking for p/t work	Total					
	'000	'000	'000	'000	'000	'000	'000	'000	'000	%	%
FEMALES											
Married											
15–19	9.2	5.9	15.1	*1.9	*0.8	*2.7	17.8	7.3	25.1	*15.4	71.1
20–24	120.8	39.9	160.7	*5.1	*2.6	7.7	168.5	48.9	217.4	4.6	77.5
25–29	218.4	83.9	302.3	9.1	5.4	14.5	316.8	110.8	427.5	4.6	74.1
30–34	194.5	148.5	342.9	6.9	7.8	14.7	357.6	161.1	518.8	4.1	68.9
35–39	184.6	212.0	396.6	*5.2	7.6	12.8	409.4	179.9	589.3	3.1	69.5
40–44	208.9	218.1	427.0	10.7	8.4	19.0	446.0	117.9	563.9	4.3	79.1
45–49	239.2	209.0	448.2	7.2	5.5	12.7	460.9	115.2	576.1	2.8	80.0
50–54	215.6	154.0	369.6	*4.3	*5.1	9.4	379.0	123.9	502.8	2.5	75.4
55–59	134.5	128.5	263.1	*1.8	*1.6	*3.5	266.5	192.9	459.5	*1.3	58.0
60–64	53.2	81.1	134.2	*0.9	*1.6	*2.6	136.8	245.0	381.8	*1.9	35.8
65–69	10.9	26.1	37.0	*0.3	*—	*0.3	37.3	237.5	274.8	*0.9	13.6
70 and over	*2.2	8.6	10.9	*—	*—	*—	10.9	414.9	425.7	*—	2.5
15–64	1 578.9	1 280.9	2 859.8	53.2	46.4	99.6	2 959.4	1 302.7	4 262.1	3.4	69.4
Total	1 592.0	1 315.6	2 907.6	53.5	46.4	100.0	3 007.6	1 955.0	4 962.6	3.3	60.6
Not Married											
15–19	86.3	266.8	353.2	25.2	31.5	56.7	409.9	268.2	678.0	13.8	60.4
20–24	237.5	145.9	383.4	18.4	6.1	24.5	407.9	99.5	507.4	6.0	80.4
25–29	176.5	45.2	221.8	10.2	*3.3	13.5	235.3	54.0	289.3	5.7	81.3
30–34	110.5	37.5	148.0	8.6	*2.6	11.2	159.1	43.9	203.0	7.0	78.4
35–39	86.0	42.2	128.2	10.1	*4.2	14.2	142.4	55.4	197.9	10.0	72.0
40–44	85.9	55.4	141.3	6.2	5.0	11.2	152.5	37.0	189.5	7.3	80.5
45–49	97.1	41.1	138.1	8.5	*3.9	12.4	150.6	44.0	194.5	8.2	77.4
50–54	90.8	44.6	135.5	5.5	*1.9	7.4	142.9	52.6	195.5	5.2	73.1
55–59	80.2	38.6	118.8	*2.2	*1.3	*3.6	122.3	66.3	188.6	*2.9	64.8
60–64	33.2	31.7	64.9	*0.8	*1.4	*2.2	67.1	102.5	169.5	*3.2	39.6
65–69	7.4	9.4	16.8	*0.3	*0.4	*0.7	17.5	124.0	141.5	*4.0	12.4
70 and over	*2.5	8.4	10.8	*0.3	*—	*0.3	11.1	704.0	715.1	*2.7	1.6
15–64	1 084.1	748.9	1 833.1	95.7	61.2	156.8	1 989.9	823.4	2 813.3	7.9	70.7
Total	1 094.0	766.7	1 860.7	96.3	61.5	157.8	2 018.6	1 651.4	3 670.0	7.8	55.0
Total											
15–19	95.5	272.8	368.2	27.1	32.3	59.4	427.7	275.4	703.1	13.9	60.8
20–24	358.3	185.8	544.2	23.5	8.7	32.2	576.4	148.4	724.8	5.6	79.5
25–29	395.0	129.1	524.1	19.3	8.7	28.0	552.1	164.8	716.8	5.1	77.0
30–34	304.9	186.0	490.9	15.5	10.3	25.9	516.8	205.0	721.8	5.0	71.6
35–39	270.6	254.2	524.8	15.3	11.8	27.1	551.8	235.3	787.1	4.9	70.1
40–44	294.8	273.5	568.3	16.8	13.4	30.2	598.5	154.9	753.4	5.1	79.4
45–49	336.3	250.1	586.4	15.7	9.4	25.1	611.5	159.1	770.6	4.1	79.4
50–54	306.5	198.6	505.0	9.8	7.0	16.8	521.9	176.5	698.3	3.2	74.7
55–59	214.7	167.1	381.8	*4.0	*3.0	7.0	388.8	259.2	648.1	1.8	60.0
60–64	86.4	112.7	199.1	*1.7	*3.0	*4.7	203.9	347.4	551.3	*2.3	37.0
65–69	18.3	35.5	53.8	*0.7	*0.4	*1.0	54.8	361.5	416.3	*1.9	13.2
70 and over	*4.7	17.0	21.7	*0.3	*—	*0.3	22.0	1 118.9	1 140.9	*1.4	1.9
15–64	2 663.1	2 029.8	4 692.8	148.9	107.6	256.5	4 949.3	2 126.1	7 075.4	5.2	70.0
Total	2 686.0	2 082.3	4 768.4	149.8	107.9	257.8	5 026.2	3 606.4	8 632.6	5.1	58.2
Mean age	38.4	39.0	38.7	33.0	32.1	32.6	38.4	55.4	45.5
Median age	38	40	39	31	32	32	38	60	44

* estimate is subject to sampling variability too high for most practical purposes

— nil or rounded to zero (including null cells)

. . not applicable

Source: Labour Force Survey. See Appendix 1.

Age group (years)	EMPLOYED			UNEMPLOYED			Labour force	Not in the labour force	Civilian population	Unemployment rate	Participation rate
	Full-time	Part-time	Total	Looking for f/t work	Looking for p/t work	Total					
	'000	'000	'000	'000	'000	'000	'000	'000	'000	%	%
PERSONS											
Married											
15–19	15.6	7.8	23.4	*3.9	*0.8	*4.8	28.2	7.8	36.0	*17.0	78.3
20–24	243.3	53.0	296.3	9.5	*3.1	12.5	308.8	60.2	369.0	4.1	83.7
25–29	522.4	100.9	623.3	19.2	6.3	25.5	648.8	123.6	772.4	3.9	84.0
30–34	628.1	175.5	803.7	12.1	9.9	22.0	825.7	177.8	1 003.5	2.7	82.3
35–39	701.8	247.7	949.6	10.5	8.6	19.1	968.7	206.5	1 175.2	2.0	82.4
40–44	701.8	249.9	951.6	19.6	10.4	29.9	981.6	155.8	1 137.4	3.0	86.3
45–49	751.2	244.9	996.2	13.0	6.5	19.6	1 015.8	146.7	1 162.5	1.9	87.4
50–54	647.0	190.4	837.4	11.9	6.0	17.9	855.3	172.4	1 027.7	2.1	83.2
55–59	469.6	177.6	647.1	9.7	*3.7	13.4	660.5	288.8	949.2	2.0	69.6
60–64	245.1	138.2	383.3	*4.7	*3.4	8.1	391.4	437.6	829.0	2.1	47.2
65–69	69.3	68.3	137.6	*0.7	*0.7	*1.4	139.1	466.1	605.2	*1.0	23.0
70 and over	21.1	39.0	60.1	—	*0.2	*0.2	60.3	971.4	1 031.7	*0.3	5.8
15–64	4 925.9	1 586.0	6 511.8	114.1	58.7	172.8	6 684.6	1 777.1	8 461.8	2.6	79.0
Total	5 016.3	1 693.3	6 709.6	114.8	59.6	174.4	6 883.9	3 214.7	10 098.6	2.5	68.2
Not Married											
15–19	265.5	471.5	736.9	53.6	60.5	114.1	851.1	552.3	1 403.4	13.4	60.6
20–24	591.1	267.4	858.6	48.9	13.4	62.3	920.9	188.6	1 109.5	6.8	83.0
25–29	454.5	90.1	544.6	26.8	6.1	32.9	577.5	103.0	680.5	5.7	84.9
30–34	282.1	57.7	339.8	19.7	*4.6	24.3	364.1	75.1	439.2	6.7	82.9
35–39	222.2	56.6	278.8	17.8	5.4	23.2	302.0	84.2	386.3	7.7	78.2
40–44	202.2	71.2	273.3	13.1	5.6	18.7	292.0	69.1	361.1	6.4	80.9
45–49	211.2	57.5	268.7	14.1	*4.8	18.8	287.5	83.9	371.4	6.6	77.4
50–54	185.6	61.3	247.0	10.6	*2.6	13.2	260.2	96.2	356.4	5.1	73.0
55–59	153.7	51.3	205.0	8.0	*2.0	10.0	215.1	123.6	338.6	4.7	63.5
60–64	68.7	39.6	108.4	*3.5	*1.7	*5.1	113.5	164.6	278.1	*4.5	40.8
65–69	18.2	17.8	36.0	*1.1	*0.4	*1.5	37.5	186.8	224.3	*4.0	16.7
70 and over	6.5	13.1	19.6	*0.3	*0.7	*1.0	20.5	972.8	993.4	*4.6	2.1
15–64	2 636.8	1 224.4	3 861.2	216.1	106.7	322.8	4 184.0	1 540.6	5 724.6	7.7	73.1
Total	2 661.5	1 255.3	3 916.8	217.5	107.7	325.3	4 242.1	2 700.2	6 942.3	7.7	61.1
Total											
15–19	281.0	479.3	760.3	57.6	61.4	118.9	879.2	560.1	1 439.4	13.5	61.1
20–24	834.4	320.5	1 154.8	58.4	16.5	74.9	1 229.7	248.8	1 478.5	6.1	83.2
25–29	976.9	191.0	1 167.9	46.0	12.4	58.4	1 226.3	226.6	1 453.0	4.8	84.4
30–34	910.3	233.3	1 143.5	31.8	14.5	46.3	1 189.8	252.9	1 442.7	3.9	82.5
35–39	924.0	304.3	1 228.4	28.3	14.0	42.4	1 270.7	290.7	1 561.4	3.3	81.4
40–44	903.9	321.1	1 225.0	32.6	16.0	48.6	1 273.6	225.0	1 498.5	3.8	85.0
45–49	962.4	302.4	1 264.9	27.1	11.3	38.4	1 303.3	230.6	1 533.9	2.9	85.0
50–54	832.7	251.7	1 084.4	22.6	8.6	31.2	1 115.5	268.6	1 384.1	2.8	80.6
55–59	623.2	228.9	852.2	17.7	5.7	23.4	875.5	412.3	1 287.9	2.7	68.0
60–64	313.8	177.9	491.7	8.2	*5.1	13.2	504.9	602.1	1 107.0	2.6	45.6
65–69	87.6	86.1	173.7	*1.8	*1.1	*2.9	176.6	653.0	829.5	*1.6	21.3
70 and over	27.5	52.1	79.7	*0.3	*0.8	*1.1	80.8	1 944.2	2 025.0	*1.4	4.0
15–64	7 562.7	2 810.4	10 373.0	330.2	165.4	495.6	10 868.6	3 317.7	14 186.3	4.6	76.6
Total	7 677.8	2 948.6	10 626.4	332.3	167.3	499.6	11 126.0	5 914.9	17 040.9	4.5	65.3
Mean age	39.4	38.5	39.1	33.3	30.5	32.3	38.8	56.0	44.8
Median age	39	39	39	31	26	29	39	62	43

* estimate is subject to sampling variability too high for most practical purposes

— nil or rounded to zero (including null cells)

.. not applicable

Source: Labour Force Survey. See Appendix 1.

	EMPLOYED			UNEMPLOYED			Labour force	Not in the labour force	Civilian population aged 15 and over	Unemployment rate	Participation rate
	Full-time	Part-time	Total	Looking for f/t work	Looking for p/t work	Total					
	'000	'000		'000	'000						
NEW SOUTH WALES											
Sydney											
Males	1 048.2	170.3	1 218.6	38.4	12.3	50.6	1 269.2	476.1	1 745.3	4.0	72.7
Females	614.3	383.1	997.4	31.8	19.3	51.2	1 048.6	757.8	1 806.4	4.9	58.0
Persons	1 662.5	553.5	2 216.0	70.2	31.6	101.8	2 317.8	1 233.9	3 551.7	4.4	65.3
Balance of New South Wales											
Males	551.1	108.0	659.1	29.8	4.9	34.7	693.8	329.2	1 023.0	5.0	67.8
Females	258.6	267.1	525.7	21.3	13.4	34.6	560.4	483.4	1 043.8	6.2	53.7
Persons	809.8	375.1	1 184.8	51.1	18.2	69.4	1 254.2	812.6	2 066.8	5.5	60.7
Total											
Males	1 599.3	278.3	1 877.7	68.2	17.2	85.4	1 963.0	805.2	2 768.2	4.3	70.9
Females	872.9	650.2	1 523.2	53.1	32.7	85.8	1 609.0	1 241.2	2 850.2	5.3	56.5
Persons	2 472.3	928.5	3 400.8	121.3	49.9	171.2	3 572.0	2 046.5	5 618.4	4.8	63.6
VICTORIA											
Melbourne											
Males	898.4	170.7	1 069.1	30.8	13.9	44.7	1 113.7	395.2	1 508.9	4.0	73.8
Females	506.0	371.5	877.5	26.2	23.3	49.5	927.0	652.1	1 579.1	5.3	58.7
Persons	1 404.4	542.1	1 946.6	57.0	37.2	94.2	2 040.7	1 047.2	3 088.0	4.6	66.1
Balance of Victoria											
Males	326.3	56.6	382.9	9.0	*5.4	14.5	397.4	170.2	567.6	3.6	70.0
Females	153.6	159.3	312.8	10.8	9.1	19.9	332.8	253.1	585.9	6.0	56.8
Persons	479.9	215.9	695.8	19.9	14.5	34.4	730.2	423.3	1 153.5	4.7	63.3
Total											
Males	1 224.8	227.2	1 452.0	39.8	19.3	59.1	1 511.1	565.4	2 076.5	3.9	72.8
Females	659.6	530.8	1 190.3	37.1	32.4	69.4	1 259.8	905.2	2 165.0	5.5	58.2
Persons	1 884.3	758.0	2 642.3	76.9	51.7	128.6	2 770.9	1 470.6	4 241.5	4.6	65.3
QUEENSLAND											
Brisbane											
Males	469.3	81.7	551.0	17.4	*3.7	21.2	572.2	181.1	753.2	3.7	76.0
Females	276.7	188.7	465.4	11.8	9.1	20.9	486.3	295.0	781.3	4.3	62.2
Persons	746.0	270.4	1 016.4	29.2	12.8	42.0	1 058.5	476.1	1 534.5	4.0	69.0
Balance of Queensland											
Males	546.4	85.3	631.7	18.6	*5.1	23.7	655.4	255.7	911.1	3.6	71.9
Females	270.9	232.6	503.5	21.1	9.3	30.4	533.9	373.5	907.4	5.7	58.8
Persons	817.2	317.9	1 135.2	39.7	14.4	54.1	1 189.3	629.2	1 818.5	4.6	65.4
Total											
Males	1 015.7	167.0	1 182.6	36.0	8.9	44.9	1 227.5	436.8	1 664.3	3.7	73.8
Females	547.6	421.3	968.9	32.9	18.3	51.3	1 020.2	668.5	1 688.7	5.0	60.4
Persons	1 563.3	588.3	2 151.6	68.9	27.2	96.2	2 247.8	1 105.3	3 353.0	4.3	67.0

* estimate is subject to sampling variability too high for most practical purposes

Source: Labour Force Survey. See Appendix 1.

	EMPLOYED			UNEMPLOYED							
	Full-time	Part-time	Total	Looking for f/t work	Looking for p/t work	Total	Labour force	Not in the labour force	Civilian population aged 15 and over	Unemployment rate	Participation rate
	'000	'000	'000	'000	'000	'000	'000	'000	'000	%	%
SOUTH AUSTRALIA											
Adelaide											
Males	256.2	56.5	312.7	11.3	4.0	15.3	328.0	137.0	465.0	4.7	70.5
Females	140.7	121.3	262.0	8.7	8.1	16.8	278.8	213.4	492.2	6.0	56.6
Persons	396.9	177.8	574.7	20.0	12.1	32.1	606.8	350.4	957.2	5.3	63.4
Balance of South Australia											
Males	97.8	15.1	112.9	4.5	*1.0	5.6	118.5	52.7	171.2	4.7	69.2
Females	45.5	44.5	90.0	*1.6	*1.8	3.4	93.4	72.2	165.6	3.6	56.4
Persons	143.3	59.6	202.9	6.1	*2.8	8.9	211.8	125.0	336.8	4.2	62.9
Total											
Males	354.0	71.5	425.6	15.8	5.0	20.9	446.4	189.7	636.1	4.7	70.2
Females	186.2	165.8	352.0	10.3	9.9	20.2	372.2	285.6	657.8	5.4	56.6
Persons	540.3	237.3	777.6	26.1	14.9	41.1	818.6	475.3	1 294.0	5.0	63.3
WESTERN AUSTRALIA											
Perth											
Males	401.5	64.5	466.0	10.4	*3.6	13.9	479.9	144.0	623.9	2.9	76.9
Females	208.1	166.4	374.5	6.5	6.7	13.2	387.7	254.1	641.8	3.4	60.4
Persons	609.6	230.9	840.5	16.9	10.3	27.2	867.6	398.0	1 265.7	3.1	68.6
Balance of Western Australia											
Males	152.1	18.6	170.6	*3.2	*1.7	5.0	175.6	55.1	230.7	2.8	76.1
Females	62.3	57.8	120.2	*2.2	*2.6	4.8	124.9	87.6	212.5	3.8	58.8
Persons	214.4	76.4	290.8	5.4	*4.4	9.8	300.5	142.7	443.3	3.2	67.8
Total											
Males	553.5	83.1	636.6	13.6	5.3	18.9	655.5	199.1	854.6	2.9	76.7
Females	270.4	224.3	494.7	8.6	9.3	18.0	512.7	341.6	854.3	3.5	60.0
Persons	824.0	307.3	1 131.3	22.3	14.7	36.9	1 168.2	540.8	1 708.9	3.2	68.4
TASMANIA											
Hobart											
Males	46.5	7.2	53.7	*1.6	*0.7	2.3	56.0	25.3	81.3	4.1	68.9
Females	25.0	21.9	47.0	*1.6	*0.9	2.5	49.5	37.7	87.2	*5.1	56.8
Persons	71.5	29.1	100.7	3.3	*1.6	4.8	105.5	63.0	168.5	4.6	62.6
Balance of Tasmania											
Males	62.6	9.8	72.3	3.0	*0.4	3.4	75.8	37.6	113.4	4.5	66.8
Females	29.3	25.4	54.8	3.6	*1.6	5.3	60.0	56.4	116.5	8.8	51.5
Persons	91.9	35.2	127.1	6.6	*2.0	8.7	135.8	94.1	229.8	6.4	59.1
Total											
Males	109.0	17.0	126.0	4.7	*1.0	5.7	131.7	62.9	194.7	4.3	67.7
Females	54.4	47.4	101.7	5.2	2.5	7.8	109.5	94.1	203.6	7.1	53.8
Persons	163.4	64.4	227.8	9.9	3.6	13.5	241.3	157.0	398.3	5.6	60.6

* estimate is subject to sampling variability too high for most practical purposes

Source: Labour Force Survey. See Appendix 1.

	EMPLOYED			UNEMPLOYED			Labour force	Not in the labour force	Civilian population aged 15 and over	Unemployment rate	Participation rate
	Full-time	Part-time	Total	Looking for f/t work	Looking for p/t work	Total					
'000	'000	'000	'000	'000	'000	'000	'000	'000	%	%	
NORTHERN TERRITORY											
Total											
Males	50.9	7.8	58.7	2.0	*1.5	3.5	62.2	19.7	81.9	5.7	76.0
Females	34.2	12.4	46.6	*1.1	*1.5	2.5	49.2	25.9	75.1	5.2	65.5
Persons	85.2	20.2	105.3	3.1	3.0	6.1	111.4	45.6	157.0	5.5	71.0
AUSTRALIAN CAPITAL TERRITORY											
Total											
Males	84.5	14.4	98.8	2.3	*1.1	3.4	102.3	29.6	131.9	3.3	77.5
Females	60.6	30.2	90.9	*1.5	*1.3	2.8	93.6	44.3	137.9	3.0	67.9
Persons	145.1	44.6	189.7	3.8	2.4	6.2	195.9	73.9	269.8	3.2	72.6
AUSTRALIA											
State capital cities											
Males	3 120.1	550.8	3 670.9	109.9	38.2	148.0	3 819.0	1 358.6	5 177.6	3.9	73.8
Females	1 770.9	1 252.9	3 023.8	86.7	67.4	154.1	3 177.9	2 210.0	5 387.9	4.8	59.0
Persons	4 891.0	1 803.8	6 694.8	196.5	105.6	302.1	6 996.9	3 568.6	10 565.5	4.3	66.2
Balance of Australia(a)											
Males	1 871.7	315.4	2 187.1	72.6	21.2	93.8	2 280.9	949.9	3 230.8	4.1	70.6
Females	915.1	829.4	1 744.5	63.2	40.5	103.7	1 848.2	1 396.4	3 244.6	5.6	57.0
Persons	2 786.8	1 144.8	3 931.6	135.8	61.7	197.5	4 129.1	2 346.3	6 475.4	4.8	63.8
Total											
Males	4 991.7	866.3	5 858.0	182.5	59.3	241.8	6 099.9	2 308.5	8 408.3	4.0	72.5
Females	2 686.0	2 082.3	4 768.4	149.8	107.9	257.8	5 026.2	3 606.4	8 632.6	5.1	58.2
Persons	7 677.8	2 948.6	10 626.4	332.3	167.3	499.6	11 126.0	5 914.9	17 040.9	4.5	65.3

* estimate is subject to sampling variability too high for most practical purposes

(a) Includes Northern Territory and Australian Capital Territory.

Source: Labour Force Survey. See Appendix 1.

Age group (years)	EMPLOYED			UNEMPLOYED									UNEMPLOYMENT TO POPULATION RATIO
	Full-time	Part-time	Total	Looking for f/t work	Looking for first f/t job	Looking for p/t work	Total(a)	Labour force	Not in the labour force	Civilian population	Unemp- loyment rate	Partic- ipation rate	Looking for f/t work
	'000	'000	'000	'000	'000	'000	'000	'000	'000	'000	%	%	%
NOT ATTENDING FULL-TIME EDUCATION													
Males													
15–19	169.1	46.8	215.8	25.9	15.4	*3.3	29.3	245.1	34.0	279.1	11.9	87.8	9.3
20–24	441.9	53.5	495.4	30.3	8.3	*2.1	32.4	527.7	39.2	567.0	6.1	93.1	5.3
Total	611.0	100.2	711.2	56.2	23.7	5.4	61.6	772.8	73.3	846.1	8.0	91.3	6.6
Females													
15–19	79.1	63.9	143.0	22.1	15.6	2.7	24.8	167.8	38.0	205.9	14.8	81.5	10.7
20–24	331.9	100.6	432.5	21.4	*9.7	2.8	24.2	456.7	89.0	545.7	5.3	83.7	3.9
Total	411.0	164.5	575.5	43.5	25.3	5.5	49.0	624.6	127.0	751.6	7.9	83.1	5.8
Persons													
15–19	248.2	110.7	358.8	48.0	30.9	6.1	54.1	412.9	72.0	485.0	13.1	85.1	9.9
20–24	773.8	154.1	927.9	51.7	18.0	*4.9	56.6	984.5	128.2	1 112.7	5.7	88.5	4.6
Total	1 022.0	264.7	1 286.7	99.8	49.0	10.9	110.7	1 397.4	200.3	1 597.7	7.9	87.5	6.2
ATTENDING FULL-TIME EDUCATION													
Males													
15–19	16.4	159.8	176.2	*4.5	*3.9	25.7	30.2	206.5	250.7	457.1	14.6	45.2	1.0
20–24	34.2	81.2	115.3	*4.6	*3.4	5.6	10.3	125.6	61.1	186.7	8.2	67.3	2.5
Total	50.6	241.0	291.6	9.1	7.2	31.4	40.5	332.0	311.8	643.9	12.2	51.6	1.4
Females													
15–19	16.4	208.8	225.2	*5.0	*4.4	29.6	34.6	259.8	237.4	497.2	13.3	52.3	1.0
20–24	26.4	85.2	111.6	*2.0	*0.9	6.0	8.0	119.6	59.4	179.1	6.7	66.8	1.1
Total	42.8	294.1	336.9	7.1	5.3	35.5	42.6	379.5	296.8	676.3	11.2	56.1	1.0
Persons													
15–19	32.8	368.7	401.5	9.5	8.3	55.3	64.8	466.3	488.1	954.4	13.9	48.9	1.0
20–24	60.6	166.4	227.0	6.7	*4.3	11.6	18.3	245.2	120.6	365.8	7.4	67.0	1.8
Total	93.4	535.0	628.4	16.2	12.6	66.9	83.1	711.5	608.7	1 320.2	11.7	53.9	1.2
TOTAL													
Males													
15–19	185.5	206.6	392.1	30.4	19.2	29.0	59.5	451.6	284.7	736.3	13.2	61.3	4.1
20–24	476.1	134.6	610.7	34.9	11.7	7.7	42.7	653.3	100.4	753.7	6.5	86.7	4.6
Total	661.6	341.2	1 002.8	65.3	30.9	36.8	102.1	1 104.9	385.1	1 490.0	9.2	74.2	4.4
Females													
15–19	95.5	272.8	368.2	27.1	20.0	32.3	59.4	427.7	275.4	703.1	13.9	60.8	3.9
20–24	358.3	185.8	544.2	23.5	10.6	8.7	32.2	576.4	148.4	724.8	5.6	79.5	3.2
Total	453.8	458.6	912.4	50.6	30.6	41.0	91.6	1 004.0	423.9	1 427.9	9.1	70.3	3.5
Persons													
15–19	281.0	479.3	760.3	57.6	39.2	61.4	118.9	879.2	560.1	1 439.4	13.5	61.1	4.0
20–24	834.4	320.5	1 154.8	58.4	22.3	16.5	74.9	1 229.7	248.8	1 478.5	6.1	83.2	3.9
Total	1 115.4	799.8	1 915.2	116.0	61.5	77.8	193.8	2 108.9	808.9	2 917.9	9.2	72.3	4.0

* estimate is subject to sampling variability too high for most practical purposes

(a) Total unemployment can be obtained by adding the columns 'looking for f/t work' and 'looking for p/t work'. 'Looking for first f/t job' is a subset of 'looking for f/t work'.

Source: Labour Force Survey. See Appendix 1.

	EMPLOYED		Unemployed	Labour force	Not in the labour force	Unemployment rate	Participation rate
	Full-time	Total					
	'000	'000	'000	'000	'000	%	%
COUNTRY OF BIRTH							
Australia	5 631.9	7 860.1	365.0	8 225.2	3 726.6	4.4	68.8
Born overseas	2 042.1	2 762.2	134.6	2 896.8	1 896.5	4.6	60.4
Oceania and Antarctica	303.6	386.4	18.9	405.3	124.5	4.7	76.5
New Zealand	245.1	309.3	11.5	320.8	93.0	3.6	77.5
North-West Europe	607.1	829.9	30.3	860.2	608.2	3.5	58.6
United Kingdom and Ireland	496.6	675.1	24.1	699.1	470.7	3.4	59.8
Germany	38.4	57.8	*2.4	60.2	56.3	*4.0	51.7
Netherlands	31.9	43.0	*1.3	44.3	41.1	*2.9	51.8
Southern and Eastern Europe	222.9	305.2	11.9	317.1	473.6	3.7	40.1
Italy	48.9	68.1	*2.5	70.5	145.0	*3.5	32.7
Greece	21.6	28.6	*0.9	29.6	85.8	*3.2	25.6
North Africa and the Middle East	81.7	114.4	10.8	125.2	148.5	8.6	45.7
Lebanon	27.2	34.7	*4.6	39.3	57.4	*11.7	40.6
South-East Asia	289.5	376.7	22.7	399.4	176.3	5.7	69.4
Viet Nam	79.9	104.1	6.7	110.8	58.5	6.0	65.4
Malaysia	50.8	64.1	*3.1	67.3	26.7	*4.7	71.6
Philippines	72.4	96.4	6.0	102.4	26.6	5.9	79.4
North-East Asia	177.4	254.1	12.4	266.5	162.5	4.7	62.1
China (excludes SARs and Taiwan Province)	97.1	137.5	7.5	145.0	88.6	5.1	62.1
Southern and Central Asia	163.7	227.0	17.4	244.4	95.9	7.1	71.8
India	89.4	123.8	10.0	133.9	44.5	7.5	75.1
Americas	92.7	127.6	*4.3	131.8	56.7	*3.2	69.9
Sub-Saharan Africa	103.6	141.0	5.8	146.8	50.4	4.0	74.5
YEAR OF ARRIVAL IN AUSTRALIA							
Arrived 1986–1995							
Oceania and Antarctica	86.9	112.8	5.4	118.2	28.9	4.6	80.3
North-West Europe	84.1	109.7	*5.1	114.7	36.4	*4.4	75.9
Southern and Eastern Europe	37.6	52.3	*2.6	54.9	23.7	*4.7	69.9
North Africa and the Middle East	21.7	29.2	*2.3	31.5	28.8	*7.4	52.3
South-East Asia	110.7	145.4	7.3	152.8	57.3	4.8	72.7
North-East Asia	67.7	91.4	5.6	97.0	39.0	5.8	71.3
Southern and Central Asia	43.8	52.7	*1.0	53.7	16.3	*1.9	76.8
Americas	18.4	26.4	*—	26.4	11.3	*—	69.9
Sub-Saharan Africa	23.6	30.1	*0.3	30.4	9.0	*1.0	77.0
Total born overseas	494.6	649.9	29.6	679.6	250.7	4.4	73.0
Arrived 1996–2008							
Oceania and Antarctica	117.3	142.6	8.7	151.3	40.4	5.8	78.9
North-West Europe	147.7	184.6	7.8	192.4	54.1	4.1	78.1
Southern and Eastern Europe	38.4	51.4	*1.8	53.2	35.5	*3.5	60.0
North Africa and the Middle East	26.3	38.2	*4.4	42.6	47.6	*10.2	47.2
South-East Asia	82.2	112.0	9.1	121.2	63.6	7.5	65.6
North-East Asia	78.6	126.2	6.2	132.4	100.0	4.7	57.0
Southern and Central Asia	95.0	143.2	15.9	159.0	53.0	10.0	75.0
Americas	34.4	50.2	*2.5	52.7	17.6	*4.8	75.0
Sub-Saharan Africa	55.0	77.6	*4.6	82.2	26.1	*5.6	75.9
Total born overseas	674.9	926.0	61.0	987.0	437.9	6.2	69.3

* estimate is subject to sampling variability too high for most practical purposes

— nil or rounded to zero (including null cells)

Source: Labour Force Survey. See Appendix 1.

	Employed	Unemployed	Labour force	Not in the labour force	Civilian population aged 15 and over	Unemployment rate	Participation rate
<i>Relationship in household</i>	'000	'000	'000	'000	'000	%	%
MALES							
Family member							
Husband or partner	3 703.6	71.1	3 774.7	1 205.5	4 980.2	1.9	75.8
Lone parent	107.0	7.1	114.2	47.9	162.1	6.3	70.5
Dependent student	219.5	34.3	253.8	236.7	490.5	13.5	51.7
Non-dependent child	643.5	62.4	705.9	135.4	841.3	8.8	83.9
Other related individual	123.1	11.7	134.8	58.9	193.7	8.7	69.6
Total	4 796.7	186.7	4 983.4	1 684.3	6 667.7	3.7	74.7
Non-family member							
Person living alone	556.0	22.8	578.9	351.7	930.5	3.9	62.2
Not living alone	310.8	17.3	328.2	76.8	404.9	5.3	81.0
Total	866.9	40.2	907.0	428.4	1 335.5	4.4	67.9
Usual resident of a household where relationship was determined	5 663.6	226.9	5 890.5	2 112.7	8 003.2	3.9	73.6
Relationship not determined(a)	194.4	15.0	209.4	195.7	405.1	7.1	51.7
Total	5 858.0	241.8	6 099.9	2 308.5	8 408.3	4.0	72.5
FEMALES							
Family member							
Wife or partner	2 814.5	97.0	2 911.5	1 874.7	4 786.2	3.3	60.8
Lone parent	376.2	46.7	422.9	290.7	713.6	11.0	59.3
Dependent student	259.8	34.1	293.9	215.9	509.8	11.6	57.6
Non-dependent child	410.3	34.5	444.8	74.2	519.0	7.8	85.7
Other related individual	95.5	5.3	100.8	113.6	214.4	5.2	47.0
Total	3 956.3	217.6	4 173.8	2 569.2	6 743.0	5.2	61.9
Non-family member							
Person living alone	432.6	16.8	449.4	636.0	1 085.4	3.7	41.4
Not living alone	195.8	14.2	210.0	66.5	276.5	6.8	75.9
Total	628.4	31.0	659.3	702.5	1 361.9	4.7	48.4
Usual resident of a household where relationship was determined	4 584.7	248.5	4 833.2	3 271.7	8 104.9	5.1	59.6
Relationship not determined(a)	183.7	9.3	193.0	334.7	527.7	4.8	36.6
Total	4 768.4	257.8	5 026.2	3 606.4	8 632.6	5.1	58.2
PERSONS							
Family member							
Spouse or partner	6 518.0	168.2	6 686.2	3 080.2	9 766.4	2.5	68.5
Lone parent	483.2	53.8	537.0	338.6	875.6	10.0	61.3
Dependent student	479.3	68.4	547.7	452.6	1 000.3	12.5	54.8
Non-dependent child	1 053.9	96.9	1 150.8	209.6	1 360.3	8.4	84.6
Other related individual	218.5	17.0	235.5	172.5	408.1	7.2	57.7
Total	8 753.0	404.3	9 157.3	4 253.5	13 410.7	4.4	68.3
Non-family member							
Person living alone	988.6	39.6	1 028.2	987.7	2 016.0	3.9	51.0
Not living alone	506.6	31.5	538.1	143.3	681.4	5.9	79.0
Total	1 495.3	71.1	1 566.4	1 131.0	2 697.4	4.5	58.1
Usual resident of a household where relationship was determined	10 248.3	475.4	10 723.7	5 384.4	16 108.1	4.4	66.6
Relationship not determined(a)	378.1	24.2	402.3	530.5	932.8	6.0	43.1
Total	10 626.4	499.6	11 126.0	5 914.9	17 040.9	4.5	65.3

(a) Includes usual residents of households where relationship was not determined, visitors to private dwellings, and persons enumerated in non-private dwellings.

Source: Labour Force Survey. See Appendix 1.

Family type/labour force status	NUMBER OF CHILDREN UNDER 15			NUMBER OF DEPENDENT CHILDREN UNDER 25			FAMILIES
	None	One	Two or more	None	One	Two or more	Total
	'000	'000	'000	'000	'000	'000	'000
ALL FAMILIES	3 535.3	958.5	1 354.2	3 108.2	1 030.3	1 709.5	5 848.0
Couple family	3 050.5	692.2	1 124.9	2 739.3	722.2	1 406.2	4 867.6
One or both spouses unemployed(b)(c)	70.2	33.0	56.5	61.2	32.1	66.2	159.6
Husband employed, wife unemployed	29.3	19.5	31.0	25.5	16.2	38.1	79.8
Husband unemployed, wife employed	19.5	4.6	6.5	17.1	6.3	7.1	30.5
Husband unemployed, wife unemployed	*5.8	*1.7	*3.7	*4.8	*2.1	*4.3	11.2
Husband unemployed, wife not in the labour force	10.3	5.8	12.1	8.9	*6.2	13.1	28.2
Neither spouse unemployed(b)	2 980.3	659.3	1 068.5	2 678.1	690.0	1 339.9	4 708.0
Husband employed, wife employed	1 540.3	445.6	652.6	1 316.1	460.8	861.5	2 638.5
Husband employed, wife not in the labour force	369.6	170.4	349.2	319.2	175.5	394.5	889.2
Husband not in the labour force, wife employed	159.5	18.6	23.7	147.5	23.1	31.2	201.8
Husband not in the labour force, wife not in the labour force	911.0	24.7	43.0	895.4	30.6	52.7	978.6
One-parent family	385.9	266.3	229.3	270.1	308.1	303.3	881.5
Parent unemployed	13.3	21.5	19.5	6.2	24.6	23.5	54.3
Male parent unemployed	*2.3	*2.5	*2.3	*0.7	*3.9	*2.4	7.0
Female parent unemployed	11.0	19.0	17.2	*5.5	20.7	21.0	47.2
Parent employed	208.5	167.0	111.4	122.2	197.9	166.9	487.0
Male parent employed	59.2	30.5	17.7	36.8	43.8	26.7	107.3
Female parent employed	149.4	136.6	93.7	85.4	154.1	140.1	379.6
Parent not in the labour force	164.1	77.7	98.4	141.7	85.6	113.0	340.3
Male parent not in the labour force	33.1	9.9	*4.4	29.7	11.5	*6.2	47.5
Female parent not in the labour force	131.0	67.8	94.0	112.0	74.1	106.8	292.9
Other family	98.8	98.8	98.8
Family reference person unemployed	*3.4	*3.4	*3.4
Family reference person employed	64.6	64.6	64.6
Family reference person not in the labour force	30.8	30.8	30.8

* estimate is subject to sampling variability too high for most practical purposes

.. not applicable

(a) Excludes families in households for which it was not possible to obtain information for all usual residents: for example, households that included a member of the permanent defence forces; households that, at the time of the survey, had one or more usual residents away for more than six weeks; and households from which an incomplete questionnaire was obtained for a usual resident.

(b) Includes same sex couples.

(c) Includes a small number of families where the husband is not in the labour force and the wife is unemployed.

Source: Labour Force Survey. See Appendix 1.

Country	ECONOMICALLY ACTIVE									
	POPULATION(b)		PARTICIPATION RATE(c)				EMPLOYMENT		UNEMPLOYMENT	
	Reference period	Persons	Reference period	Males	Females	Persons	Reference period	Persons	Reference period	Persons
	Year	'000	Year	%	%	%	Year	'000	Year	'000
Australia	2006	10 664.7	2006	71.3	57.2	64.2	2006	10 153.8	2006	525.6
Canada	2006	17 592.8	2006	72.5	62.1	67.2	2006	16 484.3	2006	1 108.4
France	2005	27 635.8	2005	62.2	49.6	55.7	2005	24 919.4	2005	2 717.0
Greece	2005	4 848.8	2005	64.9	42.3	53.3	2006	4 452.8	2006	427.4
Hong Kong (SAR of China)	2006	3 582.4	2006	71.0	52.6	61.3	2006	3 411.6	2006	170.9
Indonesia	2006	106 281.8	2006	86.5	48.9	67.6	2006	95 177.0	2006	11 104.7
Italy	2006	24 661.6	2006	61.0	38.1	49.2	2006	22 988.0	2006	1 673.0
Japan	2006	66 570.0	2006	73.2	48.5	60.4	2006	63 820.0	2006	2 750.0
Korea (Republic of)	2005	23 744.0	2005	74.6	50.1	62.0	2006	23 151.0	2006	827.0
Malaysia	2000	9 616.1	2000	79.0	43.7	61.7	2006	10 275.4	2003	369.8
New Zealand	2006	2 199.8	2006	74.5	60.6	67.3	2006	2 117.2	2006	82.6
Singapore	2006	1 880.7	2006	76.2	54.3	65.0	2006	1 796.7	2006	84.2
Sweden	2006	4 586.0	2006	81.3	76.1	78.7	2006	4 341.0	2006	246.0
United Kingdom	2005	29 517.2	2005	69.8	55.9	62.6	2005	28 165.6	2005	1 351.6
United States of America	2006	151 428.0	2006	73.5	59.4	66.2	2006	144 427.0	2006	7 001.0

(a) For most countries the employed and unemployed populations are aged 15 years and over. However the age range varies for some countries: Malaysia — 15–64 years; Sweden — 16–64 years; UK and USA — 16 years and over. Definitions also vary in terms of the inclusion or exclusion of certain other segments of the population such as the armed forces.

(b) The 'economically active population' comprises all persons who supplied labour for the production of goods and services during a specified time period. Two common measures of the economically active population are the 'usually active population,' measured in relation to a long reference period such as a year, and the 'currently active population' (often referred to as 'the labour force'), measured in relation to a short reference period such as one day or one week.

(c) Participation rates for women are frequently not comparable internationally since, in many countries, relatively large numbers of women assist on farms or in other family enterprises without pay.

Source: International Labour Organisation, Year Book of Labour Statistics 1998, 2000, 2001 and 2002; International Labour Organisation, Key Indicators of the Labour Market 2001-2002, International Labour Organisation LABORSTA database: <http://laborsta.ilo.org>

	2003	2004	2005	2006				2007				2008
	Feb	Feb	Feb	Feb	May	Aug	Nov	Feb	May	Aug	Nov	Feb
PERSONS ('000)												
Agriculture, forestry and fishing	375.5	371.2	365.8	352.5	353.2	356.3	357.7	357.8	358.8	358.4	353.9	346.4
Mining	88.9	101.0	108.1	131.0	131.9	134.2	136.4	137.2	138.1	138.4	138.7	138.7
Manufacturing	1 121.7	1 070.7	1 079.6	1 068.8	1 063.7	1 053.7	1 055.6	1 064.9	1 073.7	1 081.9	1 092.5	1 106.5
Electricity, gas and water supply	75.6	73.3	77.4	88.8	87.8	85.6	84.5	84.4	85.1	86.0	87.6	89.8
Construction	723.9	776.3	845.8	876.1	893.0	917.5	936.6	945.6	941.6	942.9	955.8	974.0
Wholesale trade	447.7	447.2	440.9	436.4	454.8	470.7	474.2	466.6	455.4	450.6	451.9	457.6
Retail trade	1 447.6	1 432.0	1 509.9	1 492.5	1 493.1	1 495.5	1 490.9	1 489.7	1 509.6	1 539.7	1 564.0	1 581.5
Accommodation, cafes and restaurants	454.4	469.7	504.5	473.5	469.5	477.5	497.6	518.4	525.1	517.6	506.9	500.3
Transport and storage	409.0	434.1	456.0	464.9	466.3	464.3	465.2	472.5	484.5	493.5	498.0	500.4
Communication services	173.9	173.4	182.6	182.1	180.9	181.6	184.8	188.3	190.9	189.6	185.7	181.4
Finance and insurance	350.6	349.3	363.4	372.5	376.5	385.8	395.7	401.8	403.5	400.4	396.6	393.0
Property and business services	1 083.5	1 117.3	1 138.1	1 204.2	1 212.4	1 221.1	1 231.1	1 242.9	1 249.5	1 257.9	1 266.1	1 275.0
Government administration and defence	440.2	449.2	454.7	464.3	479.1	490.2	490.3	484.3	481.3	483.8	486.2	490.2
Education	675.5	692.1	668.1	724.7	713.4	705.0	710.0	724.5	736.5	745.7	756.7	768.0
Health and community services	936.1	967.9	997.3	1 054.3	1 070.9	1 077.2	1 075.6	1 076.4	1 084.4	1 097.4	1 111.8	1 124.5
Cultural and recreational services	236.9	239.9	267.1	270.7	269.4	272.1	277.7	285.2	291.9	292.4	290.3	286.7
Personal and other services	386.0	371.0	384.7	398.1	398.9	397.9	396.8	396.7	399.3	403.0	408.1	411.9

	PERCENTAGE CHANGE (a) (%)												
Agriculture, forestry and fishing	-15.2	-1.2	-1.4	-0.7	0.2	0.9	0.4		0.0	0.3	-0.1	-1.3	-2.1
Mining	8.5	13.7	7.0	1.7	0.7	1.7	1.7		0.6	0.6	0.2	0.2	0.0
Manufacturing	3.8	-4.6	0.8	0.3	-0.5	-0.9	0.2		0.9	0.8	0.8	1.0	1.3
Electricity, gas and water supply	13.9	-3.1	5.7	2.4	-1.2	-2.5	-1.3		-0.2	0.9	1.1	1.7	2.5
Construction	3.1	7.2	8.9	0.9	1.9	2.7	2.1		1.0	-0.4	0.1	1.4	1.9
Wholesale trade	2.8	-0.1	-1.4	2.1	4.2	3.5	0.7		-1.6	-2.4	-1.0	0.3	1.3
Retail trade	4.9	-1.1	5.4	-0.4	0.0	0.2	-0.3		-0.1	1.3	2.0	1.6	1.1
Accommodation, cafes and restaurants	-1.1	3.4	7.4	-2.6	-0.8	1.7	4.2		4.2	1.3	-1.4	-2.1	-1.3
Transport and storage	0.2	6.1	5.1	1.3	0.3	-0.4	0.2		1.6	2.5	1.9	0.9	0.5
Communication services	4.2	-0.3	5.3	-1.2	-0.7	0.4	1.8		1.9	1.4	-0.7	-2.0	-2.3
Finance and insurance	2.0	-0.4	4.0	0.1	1.1	2.5	2.6		1.6	0.4	-0.8	-0.9	-0.9
Property and business services	4.8	3.1	1.9	0.7	0.7	0.7	0.8		1.0	0.5	0.7	0.6	0.7
Government administration and defence	11.0	2.0	1.2	1.7	3.2	2.3	0.0		-1.2	-0.6	0.5	0.5	0.8
Education	4.3	2.5	-3.5	-0.1	-1.5	-1.2	0.7		2.1	1.7	1.2	1.5	1.5
Health and community services	2.6	3.4	3.0	2.0	1.6	0.6	-0.2		0.1	0.7	1.2	1.3	1.1
Cultural and recreational services	-0.4	1.2	11.4	-1.3	-0.5	1.0	2.1		2.7	2.3	0.2	-0.7	-1.2
Personal and other services	7.0	-3.9	3.7	0.6	0.2	-0.3	-0.3		0.0	0.6	0.9	1.3	0.9

(a) Percentage change is calculated from the middle month of the previous quarter for the nine most recent quarters, and from the corresponding quarter of the previous year for earlier periods.

Source: Labour Force Survey. See Appendix 1.

	EMPLOYED		SEX		
	Full Time	Part Time	Males	Females	Persons
	'000	'000	'000	'000	'000
ALL INDUSTRIES	7 677.8	2 948.6	5 858.0	4 768.4	10 626.4
Agriculture, forestry and fishing(a)	245.8	98.1	239.6	104.4	343.9
Agriculture	203.4	81.1	194.0	90.6	284.6
Services to agriculture; hunting and trapping	17.7	9.1	18.7	8.1	26.8
Forestry and logging	11.5	*4.8	12.9	*3.4	16.3
Commercial fishing	12.8	*2.8	13.6	*2.0	15.6
Mining(a)	134.5	*3.6	119.1	19.0	138.0
Coal mining	23.6	*0.7	22.8	*1.5	24.3
Oil and gas extraction	10.5	*0.4	8.2	*2.7	10.9
Metal ore mining	41.8	*1.1	38.1	*4.8	42.9
Other mining	11.0	*0.4	9.8	*1.6	11.4
Services to mining	31.9	*0.5	27.6	*4.8	32.4
Manufacturing(a)	981.3	138.8	831.5	288.7	1 120.1
Food, beverage and tobacco manufacturing	167.0	38.3	130.1	75.3	205.3
Textile, clothing, footwear and leather manufacturing	38.8	14.0	21.9	30.8	52.7
Wood and paper product manufacturing	64.4	5.6	59.1	10.8	69.9
Printing, publishing and recorded media	86.1	18.8	57.9	47.0	104.9
Petroleum, coal, chemical and associated product manufacturing	88.7	9.3	67.0	31.1	98.1
Non-metallic mineral product manufacturing	38.2	*3.1	36.0	*5.3	41.3
Metal product manufacturing	156.8	10.5	148.7	18.7	167.3
Machinery and equipment manufacturing	219.9	15.7	198.2	37.4	235.5
Other manufacturing	56.6	11.5	55.4	12.6	68.1
Electricity, gas and water supply(a)	87.1	*3.9	71.5	19.5	91.1
Electricity and gas supply	57.8	*1.6	46.4	13.1	59.4
Water supply, sewerage and drainage services	29.3	*2.3	25.2	6.5	31.6
Construction(a)	867.5	127.5	879.3	115.8	995.0
General construction	280.9	33.2	272.5	41.6	314.1
Construction trade services	568.6	92.8	593.3	68.1	661.4
Wholesale trade(a)	395.3	76.4	316.5	155.1	471.6
Basic material wholesaling	85.6	15.9	72.4	29.1	101.5
Machinery and motor vehicle wholesaling	147.9	19.3	128.5	38.7	167.2
Personal and household good wholesaling	138.8	31.7	98.5	72.0	170.5
Retail trade(a)	846.4	712.5	754.7	804.2	1 558.9
Food retailing	223.3	351.8	259.2	315.9	575.1
Personal and household good retailing	402.6	306.7	287.2	422.1	709.3
Motor vehicle retailing and services	200.6	44.4	192.7	52.3	245.1
Accommodation, cafes and restaurants(a)	274.4	234.8	227.1	282.0	509.2
Accommodation, cafes and restaurants	274.4	234.8	227.1	282.0	509.2
Transport and storage(a)	413.7	79.6	371.1	122.2	493.3
Road transport	193.1	42.7	200.3	35.5	235.7
Rail transport	36.2	*0.4	31.7	*4.9	36.6
Water transport	15.0	*0.8	11.6	*4.3	15.9
Air and space transport	39.6	11.3	34.1	16.9	50.9
Other transport	*1.0	—	*1.0	—	*1.0
Services to transport	74.5	14.1	45.7	42.8	88.6
Storage	45.0	7.6	41.2	11.4	52.6
Communication services(a)	146.9	27.8	120.4	54.2	174.7
Communication services	146.9	27.8	120.4	54.2	174.7
Finance and insurance(a)	325.9	70.4	190.5	205.8	396.3
Finance	164.6	43.0	93.5	114.1	207.7
Insurance	72.8	7.4	36.8	43.4	80.2
Services to finance and insurance	84.8	18.1	57.2	45.8	103.0

* estimate is subject to sampling variability too high for most practical purposes

— nil or rounded to zero (including null cells)

(a) Includes any persons allocated as not further defined within this industry division.

Source: Labour Force Survey. See Appendix 1.

	EMPLOYED		SEX		
		
	<i>Full Time</i>	<i>Part Time</i>	<i>Males</i>	<i>Females</i>	<i>Persons</i>
	'000	'000	'000	'000	'000
Property and business services(a)	957.2	329.2	689.4	597.0	1 286.4
Property services	137.0	37.4	89.1	85.4	174.5
Business services	820.1	291.8	600.3	511.6	1 111.9
Government administration and defence(a)	407.4	77.5	224.1	260.8	484.9
Government administration	384.7	76.1	209.3	251.6	460.8
Defence	22.7	*1.4	14.9	9.2	24.1
Education(a)	492.7	254.9	246.2	501.4	747.6
Education	492.7	254.9	246.2	501.4	747.6
Health and community services(a)	649.5	482.0	239.2	892.4	1 131.6
Health services	502.5	343.9	194.7	651.8	846.5
Community services	143.2	134.2	44.5	232.8	277.3
Cultural and recreational services(a)	165.6	111.5	142.5	134.6	277.1
Motion picture, radio and television services	37.4	13.3	30.7	20.0	50.7
Libraries, museums and the arts	53.9	34.1	42.9	45.0	87.9
Sport and recreation	72.9	63.9	67.7	69.1	136.7
Personal and other services	286.5	120.1	195.4	211.2	406.6
Personal services	130.9	84.4	76.2	139.1	215.3
Other services	155.2	34.0	119.0	70.2	189.2
Private households employing staff	*0.4	*1.6	*0.3	*1.8	*2.1

* estimate is subject to sampling variability too high for most practical purposes

(a) Includes any persons allocated as not further defined within this industry division.

Source: Labour Force Survey. See Appendix 1.

Occupation	EMPLOYED		SEX		
	Full-time	Part-time	Males	Females	Persons
	'000	'000	'000	'000	'000
ALL OCCUPATIONS	7 677.8	2 948.6	5 858.0	4 768.4	10 626.4
Managers and administrators(a)	781.4	96.5	631.3	246.6	877.9
Generalist managers	193.8	20.3	178.4	35.7	214.1
Specialist managers	434.1	29.6	304.5	159.2	463.7
Farmers and farm managers	143.0	45.1	138.8	49.2	188.1
Professionals(a)	1 635.3	494.0	1 007.8	1 121.6	2 129.4
Science, building and engineering professionals	216.0	23.3	183.3	55.9	239.3
Business and information professionals	561.5	82.1	372.9	270.7	643.6
Health professionals	255.0	144.7	102.0	297.8	399.8
Education professionals	320.9	141.3	156.7	305.4	462.1
Social, arts and miscellaneous professionals	276.9	101.5	189.4	189.0	378.4
Associate professionals(a)	1 104.3	241.6	751.1	594.8	1 345.9
Science, engineering and related associate professionals	141.0	17.5	121.0	37.4	158.5
Business and administration associate professionals	405.6	99.2	240.4	264.4	504.8
Managing supervisors (sales and service)	434.4	74.0	298.8	209.5	508.4
Health and welfare associate professionals	52.3	29.0	27.4	53.9	81.3
Other associate professionals	70.9	21.9	63.3	29.5	92.8
Tradespersons and related workers(a)	1 219.3	154.2	1 226.4	147.1	1 373.5
Mechanical and fabrication engineering tradespersons	209.2	7.6	215.1	*1.8	216.8
Automotive tradespersons	131.8	8.9	138.4	*2.3	140.7
Electrical and electronics tradespersons	196.4	15.2	207.3	*4.3	211.6
Construction tradespersons	348.5	25.4	368.6	*5.3	373.9
Food tradespersons	68.8	31.2	66.0	34.0	100.0
Skilled agricultural and horticultural workers	69.3	19.0	76.9	11.4	88.3
Other tradespersons and related workers	188.6	47.0	147.5	88.0	235.5
Advanced clerical and service workers(a)	218.3	164.9	45.4	337.8	383.2
Secretaries and personal assistants	105.1	60.9	*3.0	163.0	166.0
Other advanced clerical and service workers	113.2	104.0	42.4	174.8	217.2
Intermediate clerical, sales and service workers(a)	1 069.4	677.8	487.9	1 259.3	1 747.2
Intermediate clerical workers	639.6	290.2	240.7	689.1	929.8
Intermediate sales and related workers	141.6	29.6	101.3	69.8	171.2
Intermediate service workers	288.3	358.0	145.8	500.4	646.2
Intermediate production and transport workers(a)	731.7	177.4	788.5	120.6	909.1
Intermediate plant operators	196.7	10.8	200.7	6.7	207.4
Intermediate machine operators	63.0	11.5	53.3	21.2	74.5
Road and rail transport drivers	254.2	48.0	283.6	18.7	302.2
Other intermediate production and transport workers	216.4	106.8	249.6	73.6	323.2
Elementary clerical, sales and service workers(a)	383.1	586.6	341.6	628.1	969.7
Elementary clerks	37.3	29.2	25.3	41.1	66.5
Elementary sales workers	262.7	497.0	239.3	520.4	759.7
Elementary service workers	83.1	60.4	76.9	66.6	143.5
Labourers and related workers(a)	535.0	355.4	578.1	312.4	890.5
Cleaners	67.5	140.4	80.7	127.2	207.9
Factory labourers	188.4	39.6	154.4	73.6	228.0
Other labourers and related workers	272.9	172.5	334.7	110.8	445.5

* estimate is subject to sampling variability too high for most practical purposes

(a) Includes all persons allocated as not further defined within this occupation major group.

Source: Labour Force Survey. See Appendix 1.

	EMPLOYED FULL-TIME			EMPLOYED PART-TIME			EMPLOYED TOTAL		
	Males	Females	Persons	Males	Females	Persons	Males	Females	Persons
	'000	'000	'000	'000	'000	'000	'000	'000	'000
Industry									
Agriculture, forestry and fishing	196.0	49.9	245.8	43.6	54.5	98.1	239.6	104.4	343.9
Mining	117.8	16.7	134.5	*1.3	*2.3	*3.6	119.1	19.0	138.0
Manufacturing	785.5	195.9	981.3	46.0	92.8	138.8	831.5	288.7	1 120.1
Electricity, gas and water supply	70.6	16.5	87.1	*1.0	*3.0	*3.9	71.5	19.5	91.1
Construction	812.2	55.3	867.5	67.1	60.5	127.5	879.3	115.8	995.0
Wholesale trade	288.8	106.4	395.3	27.7	48.7	76.4	316.5	155.1	471.6
Retail trade	513.9	332.5	846.4	240.7	471.7	712.5	754.7	804.2	1 558.9
Accommodation, cafes and restaurants	154.0	120.4	274.4	73.1	161.6	234.8	227.1	282.0	509.2
Transport and storage	332.5	81.2	413.7	38.6	41.0	79.6	371.1	122.2	493.3
Communication services	107.6	39.3	146.9	12.8	14.9	27.8	120.4	54.2	174.7
Finance and insurance	173.8	152.1	325.9	16.7	53.8	70.4	190.5	205.8	396.3
Property and business services	578.5	378.6	957.2	110.8	218.4	329.2	689.4	597.0	1 286.4
Government administration and defence	207.4	200.0	407.4	16.7	60.8	77.5	224.1	260.8	484.9
Education	193.0	299.7	492.7	53.2	201.7	254.9	246.2	501.4	747.6
Health and community services	188.4	461.1	649.5	50.8	431.2	482.0	239.2	892.4	1 131.6
Cultural and recreational services	104.0	61.6	165.6	38.5	73.1	111.5	142.5	134.6	277.1
Personal and other services	167.7	118.8	286.5	27.7	92.4	120.1	195.4	211.2	406.6
Occupation									
Managers and administrators	586.3	195.1	781.4	45.0	51.5	96.5	631.3	246.6	877.9
Professionals	888.6	746.7	1 635.3	119.2	374.9	494.0	1 007.8	1 121.6	2 129.4
Associate professionals	675.7	428.6	1 104.3	75.4	166.2	241.6	751.1	594.8	1 345.9
Tradespersons and related workers	1 129.9	89.4	1 219.3	96.5	57.7	154.2	1 226.4	147.1	1 373.5
Advanced clerical and service workers	39.9	178.4	218.3	5.5	159.4	164.9	45.4	337.8	383.2
Intermediate clerical, sales and service workers	397.2	672.2	1 069.4	90.7	587.1	677.8	487.9	1 259.3	1 747.2
Intermediate production and transport workers	670.4	61.3	731.7	118.0	59.4	177.4	788.5	120.6	909.1
Elementary clerical, sales and service workers	187.4	195.7	383.1	154.2	432.4	586.6	341.6	628.1	969.7
Labourers and related workers	416.4	118.6	535.0	161.7	193.8	355.4	578.1	312.4	890.5
Australia	4 991.7	2 686.0	7 677.8	866.3	2 082.3	2 948.6	5 858.0	4 768.4	10 626.4

* estimate is subject to sampling variability too high for most practical purposes

Source: Labour Force Survey. See Appendix 1.

STATUS IN EMPLOYMENT

	Employee	Employer	Own account worker	Total(a)
	'000	'000	'000	'000
PERSONS				
Employed				
Full-time	6 829.2	263.9	579.2	7 677.8
Part-time	2 529.9	53.0	344.1	2 948.6
Total	9 359.0	316.8	923.4	10 626.4
Industry				
Agriculture, forestry and fishing	175.5	32.2	131.2	343.9
Mining	136.1	*0.6	*1.3	138.0
Manufacturing	1 042.7	25.2	48.7	1 120.1
Electricity, gas and water supply	90.2	*0.2	*0.7	91.1
Construction	709.4	63.1	219.2	995.0
Wholesale trade	435.3	7.2	26.9	471.6
Retail trade	1 403.8	62.9	87.7	1 558.9
Accommodation, cafes and restaurants	473.3	19.7	14.6	509.2
Transport and storage	437.1	11.9	44.1	493.3
Communication services	161.6	*3.1	10.0	174.7
Finance and insurance	372.4	*2.5	21.5	396.3
Property and business services	1 096.7	43.9	142.7	1 286.4
Government administration and defence	482.5	*—	*2.0	484.9
Education	719.6	*1.5	26.1	747.6
Health and community services	1 064.5	19.7	45.9	1 131.6
Cultural and recreational services	223.9	*4.5	48.3	277.1
Personal and other services	334.6	18.6	52.6	406.6
Occupation				
Managers and administrators	674.8	53.4	148.0	877.9
Professionals	1 940.9	49.7	137.9	2 129.4
Associate professionals	1 147.4	76.3	120.2	1 345.9
Tradespersons and related workers	1 072.5	71.6	227.5	1 373.5
Advanced clerical and service workers	318.9	13.7	47.4	383.2
Intermediate clerical, sales and service workers	1 665.6	13.8	64.7	1 747.2
Intermediate production and transport workers	823.2	13.1	70.4	909.1
Elementary clerical, sales and service workers	931.7	8.9	25.8	969.7
Labourers and related workers	784.0	16.2	81.5	890.5
ACTUAL HOURS WORKED IN ALL JOBS				
Average weekly hours worked	34.7	45.7	32.5	34.8
Aggregate weekly hours worked ('000 h)	324 814.9	14 490.8	30 050.5	369 839.6

* estimate is subject to sampling variability too high for most practical purposes

— nil or rounded to zero (including null cells)

(a) Includes contributing family workers.

Source: Labour Force Survey. See Appendix 1.

	EMPLOYED FULL-TIME			EMPLOYED PART-TIME			TOTAL		
	Males	Females	Persons	Males	Females	Persons	Males	Females	Persons
	hours	hours	hours	hours	hours	hours	hours	hours	hours
Average weekly hours worked									
Industry									
Agriculture, forestry and fishing	49.6	43.2	48.3	17.3	14.1	15.5	43.7	28.0	39.0
Mining	43.8	40.0	43.3	*24.9	*24.1	*24.4	43.6	38.1	42.8
Manufacturing	42.7	38.4	41.9	17.5	17.7	17.7	41.3	31.8	38.9
Electricity, gas and water supply	40.7	36.2	39.8	*26.6	*20.6	*22.1	40.5	33.8	39.0
Construction	41.9	38.3	41.6	18.1	13.7	16.1	40.0	25.5	38.3
Wholesale trade	43.7	40.2	42.7	19.1	18.2	18.5	41.5	33.3	38.8
Retail trade	43.4	40.1	42.1	14.6	15.9	15.5	34.2	25.9	29.9
Accommodation, cafes and restaurants	45.6	43.4	44.7	17.6	17.3	17.4	36.6	28.4	32.1
Transport and storage	43.6	39.2	42.7	20.0	17.8	18.8	41.1	32.0	38.9
Communication services	42.0	38.4	41.0	18.3	20.6	19.5	39.5	33.5	37.6
Finance and insurance	42.4	39.0	40.8	18.9	19.5	19.3	40.4	33.9	37.0
Property and business services	44.1	39.4	42.2	16.1	16.7	16.5	39.6	31.1	35.6
Government administration and defence	37.5	35.6	36.5	20.1	19.9	19.9	36.2	31.9	33.9
Education	41.7	40.9	41.2	18.3	18.2	18.2	36.6	31.8	33.4
Health and community services	39.8	37.7	38.3	18.7	19.5	19.4	35.3	28.9	30.3
Cultural and recreational services	42.6	39.9	41.6	15.9	14.5	15.0	35.3	26.1	30.9
Personal and other services	40.9	39.3	40.2	16.8	16.5	16.6	37.5	29.4	33.3
Occupation									
Managers and administrators	48.4	42.6	47.0	18.9	16.8	17.7	46.3	37.2	43.8
Professionals	42.3	39.7	41.1	18.6	18.5	18.5	39.5	32.6	35.9
Associate professionals	45.0	41.5	43.6	18.9	19.1	19.0	42.4	35.2	39.2
Tradespersons and related workers	41.6	40.6	41.6	18.3	16.9	17.8	39.8	31.3	38.9
Advanced clerical and service workers	42.7	37.4	38.4	13.7	14.9	14.8	39.2	26.8	28.2
Intermediate clerical, sales and service workers	40.2	37.6	38.6	17.0	18.6	18.4	35.9	28.8	30.8
Intermediate production and transport workers	42.0	38.0	41.6	17.0	17.6	17.2	38.2	27.9	36.9
Elementary clerical, sales and service workers	40.8	37.4	39.0	15.3	15.9	15.8	29.2	22.6	25.0
Labourers and related workers	40.5	36.5	39.6	14.7	15.4	15.1	33.3	23.4	29.8
Australia	42.8	39.2	41.6	16.9	17.4	17.2	39.0	29.7	34.8
Average weekly hours worked by persons at work(a)									
	45.0	41.3	43.7	18.0	18.6	18.5	41.1	31.5	36.8
Aggregate weekly hours worked ('000)	213 735.6	105 327.0	319 062.6	14 610.2	36 166.8	50 777.0	228 345.8	141 493.8	369 839.6

* estimate is subject to sampling variability too high for most practical purposes

Source: Labour Force Survey. See Appendix 1.

(a) Average weekly hours worked by persons at work excludes persons who worked zero hours during the reference week.

EMPLOYED PERSONS, Actual hours worked in all jobs: **Original**

	Feb 2001	Feb 2002	Feb 2003	Feb 2004	Feb 2005	Feb 2006	Feb 2007	Feb 2008
	'000	'000	'000	'000	'000	'000	'000	'000
MALES								
Weekly hours worked								
0	236.1	261.4	277.4	257.3	265.2	296.7	299.5	296.2
1–15	329.8	339.8	335.4	346.9	341.9	337.0	377.3	377.0
16–29	352.0	377.1	390.4	402.6	431.7	442.6	449.0	492.5
30–34	252.8	280.6	280.0	284.4	332.4	324.9	318.7	368.7
35–39	759.6	755.6	768.2	792.7	824.5	857.3	940.4	908.4
40	907.1	872.3	891.6	950.4	966.0	1 005.5	991.2	1 031.0
41–44	247.0	283.7	296.6	308.6	288.9	288.9	307.6	322.1
45–49	552.7	563.5	583.4	581.2	585.9	616.7	624.2	638.4
50 and over	1 380.4	1 368.8	1 394.8	1 390.2	1 411.0	1 370.0	1 391.8	1 423.7
Total	5 017.7	5 102.8	5 217.8	5 314.3	5 447.6	5 539.7	5 699.7	5 858.0
Average weekly hours worked								
Average hours worked	40.4	39.9	39.7	39.8	39.6	39.2	39.1	39.0
% change from corresponding month of previous year	–0.6	–1.1	–0.4	0.1	–0.4	–1.2	–0.2	–0.3
FEMALES								
Weekly hours worked								
0	212.5	232.9	268.1	246.3	285.2	275.3	294.5	277.4
1–15	699.1	745.2	760.1	721.0	709.1	747.6	750.6	772.1
16–29	765.9	800.5	835.1	845.8	884.2	916.8	923.4	962.0
30–34	340.5	367.7	388.4	427.8	431.5	430.4	454.0	465.4
35–39	685.0	659.6	683.8	709.5	733.4	781.1	799.3	848.1
40	522.3	478.0	505.2	504.1	554.0	538.2	591.1	592.9
41–44	161.9	181.3	178.1	177.4	164.5	175.8	187.9	189.9
45–49	223.2	216.1	233.9	223.7	248.4	245.1	238.6	269.7
50 and over	370.9	379.0	376.5	363.3	385.9	377.1	388.6	391.1
Total	3 981.5	4 060.2	4 229.1	4 219.0	4 396.3	4 487.4	4 628.0	4 768.4
Average weekly hours worked								
Average hours worked	29.9	29.3	29.1	29.4	29.5	29.2	29.4	29.7
% change from corresponding month of previous year	1.4	–1.9	–0.9	0.9	0.4	–0.9	0.7	0.8
PERSONS								
Weekly hours worked								
0	448.7	494.3	545.4	503.6	550.4	572.0	594.0	573.6
1–15	1 029.0	1 085.0	1 095.5	1 067.9	1 051.1	1 084.6	1 127.9	1 149.1
16–29	1 118.0	1 177.6	1 225.5	1 248.4	1 315.9	1 359.3	1 372.4	1 454.5
30–34	593.3	648.3	668.4	712.2	763.8	755.3	772.7	834.0
35–39	1 444.6	1 415.2	1 452.0	1 502.3	1 557.9	1 638.4	1 739.8	1 756.5
40	1 429.4	1 350.3	1 396.7	1 454.5	1 520.0	1 543.6	1 582.3	1 623.9
41–44	408.9	465.0	474.7	486.0	453.4	464.8	495.5	511.9
45–49	776.0	779.6	817.3	804.9	834.4	861.8	862.7	908.1
50 and over	1 751.3	1 747.8	1 771.3	1 753.5	1 797.0	1 747.2	1 780.4	1 814.8
Total	8 999.2	9 163.0	9 446.9	9 533.3	9 843.9	10 027.1	10 327.7	10 626.4
Average weekly hours worked								
Average hours worked	35.7	35.2	35.0	35.2	35.1	34.7	34.8	34.8
% change from corresponding month of previous year	0.0	–1.4	–0.7	0.5	–0.2	–1.1	0.2	0.1

Source: Labour Force Survey. See Appendix 1.

2.8

EMPLOYED PERSONS, Actual & usual hours worked in all jobs: **Original**—February 2008

	ACTUAL HOURS WORKED			USUAL HOURS WORKED		
	Males	Females	Persons	Males	Females	Persons
<i>Weekly hours worked in all jobs</i>	'000	'000	'000	'000	'000	'000
0	296.2	277.4	573.6	12.2	10.7	22.8
1-15	377.0	772.1	1 149.1	337.1	788.5	1 125.6
16-29	492.5	962.0	1 454.5	354.3	970.1	1 324.3
30-34	368.7	465.4	834.0	203.6	411.2	614.9
35-39	908.4	848.1	1 756.5	1 224.8	1 104.7	2 329.5
40	1 031.0	592.9	1 623.9	1 484.6	778.1	2 262.7
41-44	322.1	189.9	511.9	219.1	115.0	334.1
45-49	638.4	269.7	908.1	594.0	227.6	821.6
50 and over	1 423.7	391.1	1 814.8	1 428.3	362.6	1 790.8
Total	5 858.0	4 768.4	10 626.4	5 858.0	4 768.4	10 626.4

Source: Labour Force Survey. See Appendix 1.

2.9

FULL-TIME WORKERS(a), Who worked less than 35 hours: **Original**—February 2008

	Males	Females	Persons
<i>Reason for working less than 35 hours</i>	'000	'000	'000
Leave, holiday or flexitime, personal reasons	316.7	215.5	532.2
Own illness or injury	120.2	97.2	217.3
Bad weather, plant breakdown	71.4	*4.2	75.7
Began or left job in the reference week	10.4	*2.9	13.3
Stood down, on short time, insufficient work	40.9	14.1	54.9
Shift work, standard work arrangements	91.7	45.9	137.5
Other reasons	16.9	14.7	31.6
Total	668.1	394.4	1 062.6

* estimate is subject to sampling variability too high for most practical purposes

(a) This table relates only to full-time workers who usually work 35 hours or more per week.

Source: Labour Force Survey. See Appendix 1.

	EMPLOYED FULL-TIME			EMPLOYED PART-TIME			TOTAL		
	<i>Been in job less than 12 months</i>	<i>Been in job 12 months and over</i>	<i>Total</i>	<i>Been in job less than 12 months</i>	<i>Been in job 12 months and over</i>	<i>Total</i>	<i>Been in job less than 12 months</i>	<i>Been in job 12 months and over</i>	<i>Total</i>
	'000	'000	'000	'000	'000	'000	'000	'000	'000
MALES									
Expects to be working for current employer/in current business in 12 months	779.9	3 828.8	4 608.8	212.1	486.8	699.0	992.1	4 315.7	5 307.7
Does not expect to be working for current employer/in current business in 12 months									
Voluntary/non economic reasons	117.5	208.9	326.4	76.1	73.7	149.8	193.7	282.6	476.2
Involuntary/economic reasons	32.9	23.7	56.6	11.9	5.5	17.5	44.9	29.2	74.0
<i>Total</i>	150.4	232.5	383.0	88.1	79.2	167.3	238.5	311.8	550.3
Total	930.4	4 061.4	4 991.7	300.2	566.0	866.3	1 230.6	4 627.4	5 858.0
FEMALES									
Expects to be working for current employer/in current business in 12 months	471.7	1 979.1	2 450.8	422.0	1 392.1	1 814.1	893.7	3 371.2	4 264.9
Does not expect to be working for current employer/in current business in 12 months									
Voluntary/non economic reasons	73.2	129.4	202.6	105.3	136.0	241.3	178.5	265.4	443.9
Involuntary/economic reasons	24.2	8.4	32.7	15.2	11.7	26.9	39.5	20.2	59.6
<i>Total</i>	97.5	137.8	235.3	120.5	147.7	268.2	218.0	285.5	503.5
Total	569.2	2 116.9	2 686.0	542.5	1 539.8	2 082.3	1 111.7	3 656.7	4 768.4
PERSONS									
Expects to be working for current employer/in current business in 12 months	1 251.6	5 807.9	7 059.5	634.2	1 878.9	2 513.1	1 885.8	7 686.8	9 572.6
Does not expect to be working for current employer/in current business in 12 months									
Voluntary/non economic reasons	190.7	338.2	529.0	181.4	209.7	391.1	372.2	547.9	920.1
Involuntary/economic reasons	57.1	32.1	89.2	27.2	17.3	44.4	84.3	49.3	133.6
<i>Total</i>	247.9	370.3	618.2	208.6	226.9	435.6	456.5	597.3	1 053.8
Total	1 499.5	6 178.2	7 677.8	842.8	2 105.8	2 948.6	2 342.3	8 284.1	10 626.4

Source: Labour Force Survey. See Appendix 1.

	2005			2006				2007	
	May	August	November	February	May	August	November	February(a)	May
	'000	'000	'000	'000	'000	'000	'000	'000	'000

TREND

Australia

Total(a)	1 601.8	1 613.1	1 621.7	1 629.8	1 643.2	1 659.0	1 675.4	1 649.2	1 662.3
% change from previous quarter	0.8	0.7	0.5	0.5	0.8	1.0	1.0	na	0.8
Level of government									
Commonwealth Government	r248.2	r250.0	r251.7	r253.3	r255.6	r258.8	r263.7	r226.9	230.8
State government	r1 186.7	r1 196.0	r1 203.5	r1 210.4	r1 220.8	r1 232.4	r1 243.3	r1 253.4	1 262.0
Local government	166.9	167.1	166.5	166.1	166.8	167.8	168.4	168.9	169.5
States and territories									
New South Wales	484.0	485.8	488.3	491.9	496.2	501.4	506.8	499.9	503.3
Victoria	357.8	360.2	361.1	361.9	363.8	366.4	369.0	357.1	360.0
Queensland	316.8	320.2	322.3	323.9	327.3	331.3	335.1	331.6	334.8
South Australia	126.1	127.2	128.3	128.5	128.9	129.4	130.2	128.2	128.8
Western Australia	165.1	166.8	167.8	168.4	169.5	171.2	173.4	172.0	173.6
Tasmania	45.6	46.1	46.5	46.7	46.9	47.0	47.0	46.8	46.7
Northern Territory	26.4	26.3	26.3	26.6	27.0	27.2	27.2	27.1	27.1
Australian Capital Territory	80.0	80.5	81.0	82.1	83.7	85.1	86.5	86.9	88.1

ORIGINAL

Australia	1 621.4	1 626.8	1 635.0	1 584.7	1 663.9	1 701.8	1 692.3	1 601.0	1 683.4
Industry(b)									
Agriculture, forestry and fishing	4.3	4.2	4.2	4.6	4.4	4.4	4.3	4.3	3.8
Manufacturing	5.0	5.0	4.9	4.9	5.0	5.1	5.3	na	na
Electricity, gas and water supply	43.4	43.7	44.3	45.4	46.3	47.1	48.0	49.0	49.7
Construction	4.5	3.8	3.8	3.9	5.0	5.1	5.1	5.1	8.6
Transport and storage	44.1	44.0	43.6	43.2	44.9	45.1	45.7	46.4	44.5
Finance and insurance	10.3	10.4	10.6	10.7	10.9	10.9	11.1	11.2	11.2
Property and business services	26.8	26.6	27.4	27.5	26.9	27.9	28.2	28.3	29.9
Government administration and defence	420.5	433.1	437.9	443.6	446.5	481.5	455.5	462.2	472.1
Education	499.6	498.7	504.7	442.0	508.9	507.7	516.7	453.6	519.2
Health and community services	351.2	345.9	341.4	346.4	351.7	354.5	358.9	361.3	367.5
Cultural and recreational services	28.0	28.3	28.5	28.9	28.1	29.1	29.7	28.1	25.0
Personal and other services	108.1	107.9	109.4	109.4	112.3	111.0	112.3	112.6	113.2

na not available

r revised

(a) Break in series between November 2006 and February 2007. See paragraphs 48 and 49 of the Explanatory Notes.

(b) Industries excluded from the list, but included in the Australian total are:
Mining, Wholesale trade, Retail trade, Accommodation, cafes and restaurants and Communication services.

Note: The quarterly survey of Employment and Earnings - Public Sector is being replaced with an annual survey, commencing with the 2007-08 reference year. As a result, the June quarter 2007 issue was the final issue of *Wage and Salary Earners, Public Sector, Australia* (cat. no. 6248.0.55.001). Data from the 2007-08 survey are expected to be released in January 2009.

Source: Survey of Employment and Earnings - Public Sector. See Appendix 1.

	AGE GROUP (YEARS)						LOOKING FOR WORK		UNEMPLOYED
	15-19	20-24	25-34	35-44	45-54	55 and over	Looking for f/t work	Looking for p/t work	Total
<i>Duration of unemployment</i>	'000	'000	'000	'000	'000	'000	'000	'000	'000
.....									
MALES									
Duration of unemployment									
Under 4 weeks	22.3	13.5	19.5	8.2	6.3	7.0	50.8	26.1	76.9
4 weeks and under 13 weeks	22.3	13.0	13.4	8.9	5.8	5.3	53.0	15.8	68.8
13 weeks and under 26 weeks	*3.9	*4.5	5.9	5.3	*4.0	*2.2	21.3	*4.6	25.9
26 weeks and under 52 weeks	6.3	*3.8	*3.5	*2.6	*2.6	*3.2	17.4	*4.6	22.0
52 weeks and over	*4.7	7.8	8.5	8.6	8.9	9.8	40.0	8.3	48.3
52 weeks and under 104 weeks	*2.6	*4.1	6.4	*4.4	*3.7	*4.0	20.6	*4.5	25.1
104 weeks and over	*2.2	*3.7	*2.1	*4.2	5.2	5.8	19.4	*3.7	23.2
Total	59.5	42.7	50.8	33.7	27.6	27.6	182.5	59.3	241.8
Mean duration of unemployment (weeks)	16.2	28.1	25.1	64.8	102.2	83.6	47.1	36.3	44.5
Median duration of unemployment (weeks)	5	8	6	12	18	17	10	5	9
.....									
FEMALES									
Duration of unemployment									
Under 4 weeks	21.1	12.3	20.2	21.6	11.6	*3.3	47.6	42.5	90.1
4 weeks and under 13 weeks	20.9	12.9	14.2	15.5	12.4	*2.3	44.6	33.7	78.3
13 weeks and under 26 weeks	7.1	*3.4	6.7	6.4	*4.8	*3.3	20.2	11.6	31.7
26 weeks and under 52 weeks	*4.8	*1.3	*4.5	5.3	7.0	*0.9	13.8	10.1	23.8
52 weeks and over	5.4	*2.4	8.2	8.4	6.1	*3.3	23.7	10.1	33.8
52 weeks and under 104 weeks	*3.8	*1.5	*3.4	5.9	*2.0	*2.4	11.5	7.4	18.9
104 weeks and over	*1.7	*0.8	*4.8	*2.5	*4.1	*0.9	12.2	*2.7	14.9
Total	59.4	32.2	53.8	57.3	41.9	13.1	149.8	107.9	257.8
Mean duration of unemployment (weeks)	16.1	13.0	35.9	25.4	30.6	39.3	31.4	17.2	25.4
Median duration of unemployment (weeks)	6	5	6	6	8	14	8	5	6
.....									
PERSONS									
Duration of unemployment									
Under 4 weeks	43.4	25.8	39.7	29.8	17.9	10.3	98.3	68.6	167.0
4 weeks and under 13 weeks	43.2	25.9	27.6	24.5	18.2	7.6	97.6	49.5	147.1
13 weeks and under 26 weeks	11.0	7.9	12.6	11.8	8.8	5.5	41.4	16.1	57.6
26 weeks and under 52 weeks	11.1	*5.2	8.0	7.9	9.6	*4.1	31.2	14.7	45.9
52 weeks and over	10.2	10.1	16.7	17.0	15.0	13.1	63.8	18.4	82.2
52 weeks and under 104 weeks	6.3	5.6	9.8	10.3	5.7	6.4	32.1	12.0	44.1
104 weeks and over	*3.8	*4.5	6.9	6.8	9.4	6.7	31.7	6.4	38.1
Total	118.9	74.9	104.7	91.0	69.6	40.7	332.3	167.3	499.6
Mean duration of unemployment (weeks)	16.2	21.6	30.7	40.0	59.0	69.3	40.0	24.0	34.7
Median duration of unemployment (weeks)	6	6	6	9	11	15	9	5	8

* estimate is subject to sampling variability too high for most practical purposes

Source: Labour Force Survey. See Appendix 1.

<i>Month</i>	<i>Unemployed 52 weeks and under 104</i> '000	<i>Unemployed 104 weeks and over</i> '000	<i>Total long-term unemployment</i> '000	<i>Proportion of total unemployment</i> %
MALES				
February 2003	30.8	53.7	84.4	24.6
February 2004	30.1	42.0	72.0	23.9
February 2005	22.8	38.0	60.8	21.5
2006				
February	26.4	34.3	60.7	21.0
May	25.5	35.0	60.5	21.8
August	22.1	33.2	55.3	20.4
November	21.0	28.2	49.2	19.0
2007				
February	20.3	24.1	44.4	17.9
May	16.4	21.3	37.6	15.8
August	17.5	20.1	37.6	15.9
November	17.9	21.2	39.1	16.3
2008				
February	17.8	22.2	40.0	17.4
FEMALES				
February 2003	22.2	27.7	49.9	18.5
February 2004	21.4	23.7	45.1	17.3
February 2005	19.3	19.7	39.0	15.6
2006				
February	18.0	19.8	37.8	15.6
May	17.7	19.2	36.9	15.4
August	16.8	18.9	35.7	15.4
November	17.4	18.5	35.9	15.4
2007				
February	18.7	18.3	37.0	15.5
May	19.0	17.0	36.0	15.3
August	17.3	15.5	32.8	13.9
November	15.7	14.8	30.5	13.1
2008				
February	15.1	14.5	29.7	13.2
PERSONS				
February 2003	52.9	81.4	134.3	21.9
February 2004	51.5	65.6	117.1	20.8
February 2005	42.1	57.7	99.8	18.7
2006				
February	44.4	54.2	98.5	18.5
May	43.3	54.2	97.5	18.8
August	38.9	52.1	91.0	18.1
November	38.4	46.7	85.1	17.3
2007				
February	39.0	42.4	81.4	16.7
May	35.4	38.2	73.6	15.5
August	34.7	35.6	70.4	14.9
November	33.5	36.0	69.5	14.7
2008				
February	32.9	36.8	69.7	15.3

Source: Labour Force Survey. See Appendix 1.

	REASON FOR LEAVING LAST JOB		SEX		
	<i>Job loser</i>	<i>Job leaver</i>	<i>Males</i>	<i>Females</i>	<i>Persons</i>
	'000	'000	'000	'000	'000
HAD WORKED FOR TWO WEEKS OR MORE IN THE LAST TWO YEARS					
Industry of last job					
Agriculture, forestry and fishing	13.0	*2.9	9.5	6.3	15.9
Mining	*1.2	*1.3	*2.3	*0.2	*2.5
Manufacturing	21.0	9.4	25.3	*5.1	30.4
Electricity, gas and water supply	*0.8	*0.1	*0.8	*0.1	*0.9
Construction	15.7	6.3	20.4	*1.7	22.1
Wholesale trade	6.4	7.3	9.3	*4.4	13.7
Retail trade	29.1	31.1	20.8	39.4	60.2
Accommodation, cafes and restaurants	13.7	14.8	10.3	18.2	28.5
Transport and storage	5.3	*4.3	7.1	*2.5	9.6
Communication services	*2.8	*1.5	*3.1	*1.2	*4.3
Finance and insurance	*2.5	*2.2	*1.1	*3.6	*4.6
Property and business services	23.1	11.6	17.5	17.2	34.8
Government administration and defence	6.6	*4.2	6.7	*4.1	10.7
Education	12.9	6.2	5.2	13.9	19.1
Health and community services	9.3	12.8	*4.3	17.8	22.1
Cultural and recreational services	*4.9	*1.9	*3.5	*3.2	6.7
Personal and other services	*5.0	*2.7	*3.1	*4.5	7.6
Occupation of last job					
Managers and administrators	7.7	*2.8	6.6	*3.8	10.5
Professionals	23.6	11.4	16.4	18.6	35.0
Associate professionals	13.1	11.0	9.9	14.2	24.1
Tradespersons and related workers	17.9	12.8	26.0	*4.7	30.7
Advanced clerical and service workers	*3.5	*1.7	*0.2	*5.0	5.2
Intermediate clerical, sales and service workers	23.2	27.9	11.7	39.3	51.1
Intermediate production and transport workers	17.0	9.9	21.2	5.7	26.9
Elementary clerical, sales and service workers	23.3	24.3	14.8	32.7	47.5
Labourers and related workers	44.0	18.7	43.3	19.3	62.7
Total	173.2	120.5	150.2	143.5	293.7
HAD NOT WORKED FOR TWO WEEKS OR MORE IN THE LAST TWO YEARS					
Looking for first job					
Looking for full-time work	29.2	25.2	54.4
Total	55.3	54.2	109.5
Former worker					
Total	36.3	60.2	96.5
Total	91.6	114.3	206.0
TOTAL	173.2	120.5	241.8	257.8	499.6

* estimate is subject to sampling variability too high for most practical purposes

.. not applicable

Source: Labour Force Survey. See Appendix 1.

		Sep 2000	Sep 2001	Sep 2002	Sep 2003	Sep 2004	Sep 2005	Sep 2006	Sep 2007
MALES									
Underemployed(a)	'000	208.2	239.3	240.3	230.5	243.4	215.1	236.3	207.0
Unemployed	'000	346.4	393.4	357.0	319.3	312.3	291.1	279.6	232.8
Long-term unemployed	'000	93.9	99.7	87.8	83.2	74.0	55.6	51.8	40.3
Labour force	'000	5 430.2	5 483.6	5 541.4	5 603.3	5 717.3	5 843.1	5 950.4	6 059.1
Marginally attached to the labour force(b)									
Actively looking for work, not available in reference week but available to start work within 4 weeks	'000	21.6	21.5	20.9	17.1	20.4	21.3	15.4	18.3
Discouraged job seekers(a)	'000	32.4	28.3	24.4	26.6	28.4	25.0	20.4	28.0
Labour underutilisation rates									
Long-term unemployment rate(c)	%	1.7	1.8	1.6	1.5	1.3	1.0	0.9	0.7
Unemployment rate(d)	%	6.4	7.2	6.4	5.7	5.5	5.0	4.7	3.8
Underemployment rate(e)	%	3.8	4.4	4.3	4.1	4.3	3.7	4.0	3.4
Labour force underutilisation rate(f)	%	10.2	11.5	10.8	9.8	9.7	8.7	8.7	7.3
Extended labour force underutilisation rate(g)	%	11.1	12.3	11.5	10.5	10.5	9.4	9.2	8.0
FEMALES									
Underemployed(a)	'000	266.1	324.3	334.0	336.8	334.9	351.5	308.3	311.3
Unemployed	'000	239.5	281.1	278.8	270.6	246.9	242.2	228.3	232.6
Long-term unemployed	'000	50.5	53.7	51.3	46.0	51.9	40.8	35.7	31.7
Labour force	'000	4 301.7	4 368.1	4 473.8	4 559.1	4 632.9	4 786.3	4 911.4	5 018.1
Marginally attached to the labour force(b)									
Actively looking for work, not available in reference week but available to start work within 4 weeks	'000	20.4	23.6	23.0	22.3	26.3	29.7	21.9	27.0
Discouraged job seekers(a)	'000	74.1	53.3	53.6	53.2	53.6	38.2	35.8	48.6
Labour underutilisation rates									
Long-term unemployment rate(c)	%	1.2	1.2	1.1	1.0	1.1	0.9	0.7	0.6
Unemployment rate(d)	%	5.6	6.4	6.2	5.9	5.3	5.1	4.6	4.6
Underemployment rate(e)	%	6.2	7.4	7.5	7.4	7.2	7.3	6.3	6.2
Labour force underutilisation rate(f)	%	11.8	13.9	13.7	13.3	12.6	12.4	10.9	10.8
Extended labour force underutilisation rate(g)	%	13.7	15.4	15.2	14.7	14.0	13.6	12.0	12.2
PERSONS									
Underemployed(a)	'000	474.3	563.6	574.3	567.4	578.3	566.6	544.6	518.3
Unemployed	'000	585.9	674.5	635.9	589.9	559.3	533.3	507.9	465.5
Long-term unemployed	'000	144.4	153.5	139.0	129.3	126.0	96.4	87.5	72.0
Labour force	'000	9 731.8	9 851.7	10 015.3	10 162.4	10 350.3	10 629.4	10 861.8	11 077.1
Marginally attached to the labour force(b)									
Actively looking for work, not available in reference week but available to start work within 4 weeks	'000	42.0	45.1	43.9	39.4	46.6	51.0	37.3	45.4
Discouraged job seekers(a)	'000	106.5	81.7	78.0	79.8	82.0	63.1	56.1	76.6
Labour underutilisation rates									
Long-term unemployment rate(c)	%	1.5	1.6	1.4	1.3	1.2	0.9	0.8	0.7
Unemployment rate(d)	%	6.0	6.8	6.3	5.8	5.4	5.0	4.7	4.2
Underemployment rate(e)	%	4.9	5.7	5.7	5.6	5.6	5.3	5.0	4.7
Labour force underutilisation rate(f)	%	10.9	12.6	12.1	11.4	11.0	10.3	9.7	8.9
Extended labour force underutilisation rate(g)	%	12.2	13.7	13.1	12.4	12.1	11.3	10.5	9.9

(a) See the Glossary for the full definition of this term.

(b) In this table, marginal attachment to the labour force includes only a subset of the groups usually included.

(c) The long-term unemployment rate is the long-term unemployed expressed as a proportion of the labour force.

(d) The unemployment rate is the unemployed expressed as a proportion of the labour force.

(e) The underemployment rate is the underemployed expressed as a proportion of the labour force.

(f) The labour force underutilisation rate is the unemployed, plus the underemployed, expressed as a proportion of the labour force.

(g) The extended labour force underutilisation rate is the unemployed, plus the underemployed, plus a subset of persons marginally attached to the labour force, expressed as a proportion of the labour force augmented by the marginally attached persons.

Note: See the Glossary for more information on the rates in this table.

Source: Labour Force Survey, Survey of Underemployed Workers, Survey of Persons Not in the Labour Force. See Appendix 1.

Age group (years)	Long-term unemployment rate (a) %	Unemployment rate (b) %	Underemployment rate (c) %	Labour force underutilisation rate (d) %	Extended labour force underutilisation rate (e) %
MALES					
15–19	*0.8	13.8	9.4	23.2	25.0
20–24	1.0	6.0	5.5	11.6	12.3
25–34	0.6	3.6	3.1	6.8	7.0
35–44	0.7	2.6	2.5	5.0	5.3
45–54	0.6	2.6	2.4	4.9	5.1
55–69	0.7	2.2	2.8	5.0	6.4
Total (f)	0.7	3.8	3.4	7.3	8.0
FEMALES					
15–19	*0.9	12.8	10.6	23.4	24.7
20–24	*0.8	6.8	8.2	15.0	16.0
25–34	0.5	4.5	4.4	8.9	9.8
35–44	0.5	3.8	6.4	10.2	11.1
45–54	0.5	2.9	6.3	9.1	9.9
55–69	0.9	2.4	4.2	6.6	9.3
Total (f)	0.6	4.6	6.2	10.8	12.2
PERSONS					
15–19	0.9	13.3	10.0	23.3	24.9
20–24	0.9	6.4	6.8	13.2	14.1
25–34	0.5	4.0	3.7	7.7	8.3
35–44	0.6	3.1	4.3	7.4	7.9
45–54	0.6	2.7	4.2	6.9	7.4
55–69	0.8	2.3	3.4	5.7	7.6
Total (f)	0.7	4.2	4.7	8.9	9.9

* estimate is subject to sampling variability too high for most practical purposes

(a) The long-term unemployment rate is the long-term unemployed expressed as a proportion of the labour force.

(b) The unemployment rate is the unemployed expressed as a proportion of the labour force.

(c) The underemployment rate is the underemployed expressed as a proportion of the labour force.

(d) The labour force underutilisation rate is the unemployed, plus the underemployed, expressed as a proportion of the labour force.

(e) The extended labour force underutilisation rate is the unemployed, plus the underemployed, plus a subset of persons marginally attached to the labour force, expressed as a proportion of the labour force augmented by the marginally attached persons.

(f) Includes people aged 70 years and over.

Note: See the Glossary for more information on the rates in this table.

Source: Labour Force Survey, Survey of Underemployed Workers, Survey of Persons Not in the Labour Force. See Appendix 1.

	Long-term unemployment rate(a)	Unemployment rate(b)	Underemployment rate(c)	Labour force underutilisation rate(d)	Extended labour force underutilisation rate(e)
States and territories	%	%	%	%	%
MALES					
New South Wales	0.8	4.4	3.8	8.2	9.0
Victoria	0.7	3.7	3.8	7.5	8.3
Queensland	0.5	3.2	3.1	6.3	6.8
South Australia	0.8	4.5	3.9	8.3	9.5
Western Australia	*0.2	3.2	2.0	5.2	5.7
Tasmania	*1.0	5.2	3.2	8.5	9.0
Northern Territory	*0.2	3.9	*0.9	4.8	5.1
Australian Capital Territory	*0.3	2.5	2.5	5.1	5.5
Australia	0.7	3.8	3.4	7.3	8.0
FEMALES					
New South Wales	0.8	5.1	6.4	11.5	13.2
Victoria	0.7	4.9	6.9	11.8	13.1
Queensland	*0.4	4.1	5.8	10.0	11.1
South Australia	*0.6	4.6	7.7	12.3	13.5
Western Australia	*0.3	4.0	4.1	8.1	9.0
Tasmania	1.6	5.4	6.7	12.2	13.3
Northern Territory	*0.7	*3.2	*1.8	5.0	5.5
Australian Capital Territory	*0.5	2.2	5.3	7.5	7.9
Australia	0.6	4.6	6.2	10.8	12.2
PERSONS					
New South Wales	0.8	4.7	5.0	9.7	10.9
Victoria	0.7	4.3	5.2	9.4	10.5
Queensland	0.5	3.7	4.3	8.0	8.8
South Australia	0.7	4.5	5.6	10.2	11.4
Western Australia	*0.2	3.5	2.9	6.5	7.2
Tasmania	1.2	5.3	4.8	10.2	11.0
Northern Territory	*0.4	3.6	*1.3	4.9	5.3
Australian Capital Territory	*0.4	2.4	3.9	6.2	6.6
Australia	0.7	4.2	4.7	8.9	9.9

* estimate is subject to sampling variability too high for most practical purposes

(a) The long-term unemployment rate is the long-term unemployed expressed as a proportion of the labour force.

(b) The unemployment rate is the unemployed expressed as a proportion of the labour force.

(c) The underemployment rate is the underemployed expressed as a proportion of the labour force.

(d) The labour force underutilisation rate is the unemployed, plus the underemployed, expressed as a proportion of the labour force.

(e) The extended labour force underutilisation rate is the unemployed, plus the underemployed, plus a subset of persons marginally attached to the labour force, expressed as a proportion of the labour force augmented by the marginally attached persons.

Note: See the Glossary for more information on the rates in this table.

Source: Labour Force Survey, Survey of Underemployed Workers, Survey of Persons Not in the Labour Force. See Appendix 1.

	ACTUAL HOURS WORKED BY PERSONS WHO WORKED IN THE REFERENCE WEEK							Persons who did not work in the reference week	Total
	1-5	6-10	11-15	16-20	21-24	25-29	30-34		
<i>Whether preferred to work more hours</i>	'000	'000	'000	'000	'000	'000	'000	'000	'000
MALES									
Preferred not to work more hours	45.2	101.4	84.7	122.0	50.9	52.8	111.7	37.4	606.2
Preferred to work more hours									
Had actively looked for more hours									
Available to work more hours in the reference week									
Wanted to work full-time	*5.2	10.9	9.3	20.9	7.8	6.6	15.0	*3.0	79.0
Wanted to work part-time	*3.6	6.5	*2.3	*2.2	*0.9	*0.7	*0.1	*1.1	17.5
Total	8.9	17.4	11.6	23.2	8.8	7.3	15.1	*4.1	96.4
Not available to work more hours in the reference week	*—	*0.6	*1.7	*2.8	*0.3	*0.4	*—	*3.0	8.8
Total	8.9	18.0	13.4	26.0	9.1	7.7	15.1	7.0	105.3
Had not actively looked for more hours	18.1	26.2	18.7	32.3	13.8	12.9	21.6	11.2	154.8
Total	27.0	44.2	32.1	58.3	22.9	20.6	36.7	18.2	260.1
Total	72.2	145.6	116.7	180.3	73.8	73.4	148.4	55.7	866.3
FEMALES									
Preferred not to work more hours	119.3	221.1	219.5	293.7	201.1	200.9	286.8	115.4	1 657.6
Preferred to work more hours									
Had actively looked for more hours									
Available to work more hours in the reference week									
Wanted to work full-time	*4.7	10.0	13.7	20.5	11.7	12.3	13.6	*1.7	88.2
Wanted to work part-time	10.0	14.4	12.9	10.0	*4.9	5.5	*1.2	*3.3	62.2
Total	14.8	24.3	26.7	30.4	16.6	17.7	14.8	5.0	150.3
Not available to work more hours in the reference week	*0.9	*1.5	*2.9	*2.2	*0.9	*1.6	*1.3	*3.5	14.8
Total	15.7	25.8	29.6	32.6	17.5	19.4	16.1	8.5	165.1
Had not actively looked for more hours	33.1	38.4	42.6	50.1	25.2	27.8	24.8	17.7	259.6
Total	48.7	64.2	72.2	82.7	42.7	47.2	40.8	26.2	424.7
Total	168.0	285.2	291.7	376.4	243.8	248.1	327.6	141.6	2 082.3
PERSONS									
Preferred not to work more hours	164.5	322.5	304.2	415.7	251.9	253.7	398.5	152.8	2 263.8
Preferred to work more hours									
Had actively looked for more hours									
Available to work more hours in the reference week									
Wanted to work full-time	10.0	20.9	23.1	41.4	19.5	18.9	28.6	*4.7	167.1
Wanted to work part-time	13.7	20.8	15.2	12.2	5.9	6.2	*1.3	*4.3	79.6
Total	23.6	41.7	38.3	53.6	25.4	25.1	29.9	9.1	246.8
Not available to work more hours in the reference week	*0.9	*2.1	*4.6	*5.0	*1.2	*2.0	*1.3	6.5	23.6
Total	24.5	43.8	43.0	58.6	26.6	27.1	31.2	15.5	270.4
Had not actively looked for more hours	51.2	64.6	61.3	82.4	39.0	40.7	46.3	28.9	414.5
Total	75.8	108.4	104.3	141.0	65.6	67.8	77.5	44.4	684.8
Total	240.3	430.9	408.4	556.7	317.6	321.5	476.0	197.2	2 948.6

* estimate is subject to sampling variability too high for most practical purposes

— nil or rounded to zero (including null cells)
Source: Labour Force Survey. See Appendix 1.

AGE GROUP (YEARS)

	15-19	20-24	25-34	35-44	45-54	55-59	60-64	65 and over	Total
<i>Whether looking for work</i>	'000	'000	'000	'000	'000	'000	'000	'000	'000

MALES

Looking for work

Took active steps to find work(a)									
Available to start work within four weeks	*5.2	*3.0	*3.8	*3.5	*1.9	*0.6	*0.3	*0.3	18.5
Unavailable to start work within four weeks	*2.1	*0.7	*1.3	*1.3	*2.2	*0.5	—	—	8.0
Total	7.3	*3.7	*5.1	*4.8	*4.1	*1.1	*0.3	*0.3	26.5
Did not take active steps to find work	7.1	*4.2	*2.7	*3.2	*2.1	*1.4	*1.9	*1.2	23.8
Total	14.4	7.9	7.8	8.0	6.2	*2.5	*2.1	*1.5	50.3
Not looking for work(b)	266.9	86.6	84.7	89.5	127.3	121.2	209.4	1 032.6	2 018.2
Permanently unable to work	*2.9	*5.1	13.4	25.0	26.1	25.1	41.0	16.6	155.2
Institutionalised	*0.6	*0.8	*3.9	*3.0	*3.9	*4.4	*2.2	66.1	84.9
Total	284.7	100.4	109.7	125.5	163.6	153.1	254.7	1 116.8	2 308.5

FEMALES

Looking for work

Took active steps to find work(a)									
Available to start work within four weeks	*4.0	*4.3	7.8	*5.6	*4.3	*0.5	*1.0	—	27.5
Unavailable to start work within four weeks	*1.0	*1.2	*0.5	*0.7	*2.8	*0.2	—	—	6.4
Total	*4.9	*5.5	8.3	6.3	7.1	*0.7	*1.0	—	33.8
Did not take active steps to find work	9.0	8.3	9.2	8.0	*3.5	*0.8	*1.3	*0.6	40.6
Total	13.9	13.8	17.5	14.3	10.6	*1.4	*2.3	*0.6	74.5
Not looking for work(b)	259.8	131.7	343.2	361.5	299.1	233.9	318.3	1 291.7	3 239.2
Permanently unable to work	*1.5	*3.0	9.0	12.5	22.5	21.2	22.9	15.3	107.8
Institutionalised	*0.3	—	—	*1.9	*3.4	*2.8	*3.9	172.8	185.0
Total	275.4	148.4	369.8	390.2	335.6	259.2	347.4	1 480.3	3 606.4

PERSONS

Looking for work

Took active steps to find work(a)									
Available to start work within four weeks	9.2	7.3	11.7	9.1	6.2	*1.0	*1.3	*0.3	46.0
Unavailable to start work within four weeks	*3.1	*1.9	*1.7	*2.0	*5.0	*0.7	—	—	14.4
Total	12.2	9.2	13.4	11.1	11.1	*1.7	*1.3	*0.3	60.4
Did not take active steps to find work	16.1	12.5	11.9	11.2	*5.7	*2.1	*3.2	*1.8	64.4
Total	28.3	21.7	25.3	22.3	16.8	*3.9	*4.5	*2.1	124.8
Not looking for work(b)	526.7	218.3	427.9	451.0	426.5	355.1	527.7	2 324.3	5 257.3
Permanently unable to work	*4.3	8.1	22.4	37.4	48.6	46.2	63.9	32.0	262.9
Institutionalised	*0.9	*0.8	*3.9	*4.9	7.3	7.2	6.1	238.9	269.8
Total	560.1	248.8	479.5	515.7	499.1	412.3	602.1	2 597.2	5 914.9

* estimate is subject to sampling variability too high for most practical purposes

— nil or rounded to zero (including null cells)

(a) Not available to start work in the reference week.

(b) Includes persons permanently not intending to work and boarding school residents.

Source: Labour Force Survey. See Appendix 1.

PERCENTAGE CHANGE FROM PREVIOUS QUARTER										PERCENTAGE CHANGE FROM CORRESPONDING QUARTER OF PREVIOUS YEAR		
Dec Qtr 2005	Mar Qtr 2006	Jun Qtr 2006	Sep Qtr 2006	Dec Qtr 2006	Mar Qtr 2007	Jun Qtr 2007	Sep Qtr 2007	Dec Qtr 2007		Dec Qtr 2005	Dec Qtr 2006	Dec Qtr 2007
%	%	%	%	%	%	%	%	%		%	%	%

TREND

Australia	1.0	1.0	1.0	(a)na	(a)na	(a)na	(a)na	(a)na	(a)na	4.2	(a)na	(a)na
Sector												
Private	0.9	1.0	1.0	(a)na	(a)na	(a)na	(a)na	(a)na	(a)na	4.0	(a)na	(a)na
Public	1.0	1.1	1.0	(a)na	(a)na	(a)na	(a)na	(a)na	(a)na	4.4	(a)na	(a)na

ORIGINAL

Australia	0.8	1.0	0.8	1.1	1.0	1.1	0.8	1.3	1.0	4.1	4.0	4.2
States and territories												
New South Wales	0.7	1.1	0.7	1.2	0.7	1.1	0.7	1.3	0.7	4.3	3.8	3.9
Victoria	0.8	0.9	0.8	0.8	0.9	1.1	0.7	1.0	1.0	3.9	3.5	3.9
Queensland	1.2	1.1	0.8	1.3	1.3	1.1	0.9	1.2	1.1	4.3	4.5	4.3
South Australia	1.1	0.7	0.6	1.2	1.2	1.2	0.6	1.8	1.2	3.7	3.7	4.9
Western Australia	0.7	0.9	1.3	1.3	1.1	1.1	1.7	1.8	1.3	4.2	4.6	5.9
Tasmania	0.7	1.1	0.7	1.5	0.8	1.4	0.7	1.1	0.9	4.4	4.2	4.2
Northern Territory	1.2	0.7	0.8	1.3	0.6	1.1	1.1	0.8	1.0	5.1	3.5	3.9
Australian Capital Territory	0.8	1.0	0.6	1.5	0.9	1.1	0.7	1.5	1.0	3.7	4.1	4.4
Industry												
Mining	0.7	1.2	2.4	1.6	1.1	1.0	1.7	1.4	0.9	4.3	6.5	5.1
Manufacturing	0.9	0.7	0.8	1.0	0.7	1.1	1.3	1.2	0.7	4.1	3.4	4.4
Electricity, gas and water supply	0.9	2.6	1.5	1.0	0.8	0.4	2.0	1.0	0.7	4.7	6.0	4.2
Construction	1.1	1.7	1.3	0.8	1.2	1.1	1.0	1.4	1.0	4.5	5.1	4.6
Wholesale trade	0.6	0.9	0.8	0.9	1.5	0.9	0.3	1.0	1.0	3.8	4.2	3.2
Retail trade	1.0	0.7	0.4	0.6	0.6	1.1	0.8	0.9	2.1	3.9	2.4	5.0
Accommodation, cafes and restaurants	1.1	0.5	0.3	0.5	0.7	1.4	0.5	0.6	1.0	3.5	2.0	3.5
Transport and storage	0.9	1.2	0.7	1.0	1.1	0.9	1.1	1.1	0.9	4.0	4.1	4.0
Communication services	1.3	0.4	0.4	1.4	1.6	0.1	0.1	1.3	2.0	3.5	3.8	3.5
Finance and insurance	1.1	0.5	1.5	0.7	1.2	0.7	1.6	0.8	0.9	4.3	3.9	4.0
Property and business services	0.6	1.2	0.7	1.8	0.6	0.8	0.6	2.2	0.9	3.4	4.4	4.6
Government administration and defence	1.1	0.9	0.4	1.5	1.1	1.1	0.6	1.7	1.1	4.5	4.0	4.5
Education	0.6	1.9	0.9	0.6	0.9	1.7	0.8	0.9	0.6	4.3	4.4	4.0
Health and community services	1.0	0.6	0.8	1.5	1.3	1.2	0.3	1.5	0.9	5.0	4.4	4.0
Cultural and recreational services	0.6	0.6	0.3	2.0	0.5	1.0	0.5	2.2	0.6	4.6	3.4	4.4
Personal and other services	0.7	0.8	0.6	1.6	0.9	1.2	0.6	1.1	0.5	3.7	3.9	3.5
Occupation												
Managers and administrators	0.5	1.3	0.7	1.2	1.0	1.1	1.2	1.1	1.0	3.8	4.3	4.4
Professionals	0.8	1.2	0.8	1.4	1.1	0.9	0.9	1.4	0.8	4.4	4.5	4.0
Associate professionals	0.9	1.0	0.6	1.2	1.2	1.2	0.6	1.4	1.0	4.2	4.0	4.3
Tradespersons and related workers	1.1	1.1	1.1	0.9	0.5	1.2	1.2	1.0	1.0	4.6	3.7	4.5
Advanced clerical and service workers	0.9	0.9	0.6	1.3	1.0	1.2	0.7	1.6	0.8	3.7	3.8	4.3
Intermediate clerical, sales and service workers	0.9	0.6	0.8	1.1	1.0	1.0	0.6	1.2	1.1	3.9	3.5	4.0
Intermediate production and transport workers	1.0	1.0	1.1	0.9	1.0	1.0	0.9	0.9	0.8	4.3	4.1	3.6
Elementary clerical, sales and service workers	0.6	0.6	0.7	0.8	0.6	1.3	0.4	1.3	1.8	3.3	2.7	4.7
Labourers and related workers	0.9	0.7	0.8	0.7	1.0	1.3	0.7	1.1	1.0	3.6	3.3	4.2

na not available

(a) There is insufficient data to produce a reliable trend estimate for the September quarter 2006. The trend series has been suspended from the September quarter 2006 and will be re-established when sufficient data is available.

Source: Labour Price Index. See Appendix 1.

Period	FULL-TIME ADULT ORDINARY TIME EARNINGS					ALL EMPLOYEES TOTAL EARNINGS		
	Males	Females	Persons	Private sector	Public sector	Males	Females	Persons
EARNINGS (\$)								
November 2002	942.00	796.30	889.60	863.60	980.30	847.60	553.80	704.80
November 2003	992.90	841.10	939.00	913.00	1 028.80	891.70	580.80	743.50
November 2004	1 031.40	877.00	976.50	947.30	1 073.50	915.40	606.80	769.50
2005								
November	1 087.80	920.90	1 028.70	999.80	1 130.20	968.90	636.00	811.00
2006								
February	1 095.90	926.20	1 035.90	1 005.90	1 143.30	978.90	642.60	820.00
May	1 104.70	930.50	1 043.00	1 012.20	1 154.20	990.30	650.20	829.50
August	1 114.30	936.00	1 050.80	1 019.00	1 164.90	1 002.20	658.70	839.00
November	1 125.90	944.40	1 060.90	1 028.20	1 176.20	1 014.10	666.70	848.00
2007								
February	1 141.40	955.90	1 074.60	1 045.20	1 180.80	1 027.60	673.80	857.50
May	1 156.30	968.90	1 089.00	1 061.00	1 189.30	1 040.00	680.40	866.50
August	1 169.20	980.70	1 101.70	1 075.20	1 196.80	1 050.50	685.80	873.80
November	1 180.00	991.60	1 112.70	1 087.20	1 204.10	1 059.70	691.10	880.30
CHANGE FROM PREVIOUS QUARTER (%)								
2005								
November	0.9	0.8	0.9	0.8	1.4	1.0	0.9	1.0
2006								
February	0.7	0.6	0.7	0.6	1.2	1.0	1.0	1.1
May	0.8	0.5	0.7	0.6	0.9	1.2	1.2	1.2
August	0.9	0.6	0.7	0.7	0.9	1.2	1.3	1.1
November	1.0	0.9	1.0	0.9	1.0	1.2	1.2	1.1
2007								
February	1.4	1.2	1.3	(a)np	(a)np	1.3	1.1	1.1
May	1.3	1.4	1.3	1.5	0.7	1.2	1.0	1.0
August	1.1	1.2	1.2	1.3	0.6	1.0	0.8	0.8
November	0.9	1.1	1.0	1.1	0.6	0.9	0.8	0.7
CHANGE FROM CORRESPONDING QUARTER OF PREVIOUS YEAR (%)								
November 2002	4.8	4.7	4.8	5.1	4.0	4.4	3.4	3.9
November 2003	5.4	5.6	5.6	5.7	4.9	5.2	4.9	5.5
November 2004	3.9	4.3	4.0	3.8	4.3	2.7	4.5	3.5
November 2005	5.5	5.0	5.3	5.5	5.3	5.8	4.8	5.4
November 2006	3.5	2.6	3.1	2.8	4.1	4.7	4.8	4.6
November 2007	4.8	5.0	4.9	(a)np	(a)np	4.5	3.7	3.8

np not available for publication but included in totals where applicable, unless otherwise indicated

(a) Break in series between November 2006 and February 2007. See paragraph 59 of the Explanatory Notes.

Source: Survey of Average Weekly Earnings. See Appendix 1.

<i>Quarter</i>	<i>Compensation of employees for household income account</i>	<i>Gross mixed income for household sector</i>	<i>Average earnings (National Accounts basis – nominal)</i>	<i>Gross domestic product (GDP)</i>	<i>GDP per hour worked</i>
	\$m	\$m	\$ per week	\$m	index number
TREND					
December 2002	93 006	17 385	878	193 919	96.1
December 2003	98 743	19 503	915	209 098	98.0
December 2004	106 590	20 009	957	221 786	98.7
2005					
December	114 870	20 779	1 003	240 153	100.0
2006					
March	116 680	20 878	1 014	243 886	100.4
June	118 597	20 959	1 023	248 114	100.3
September	120 749	21 166	1 032	253 213	100.3
December	123 279	21 383	1 044	258 764	100.6
2007					
March	126 209	21 642	1 061	263 927	101.1
June	129 015	22 108	1 077	268 596	101.3
September	131 411	22 708	1 090	273 199	101.3
December	133 468	23 304	1 100	277 724	101.4
CHANGE FROM PREVIOUS QUARTER (%)					
2005					
December	1.7	1.1	1.3	1.7	0.8
2006					
March	1.6	0.5	1.0	1.6	0.4
June	1.6	0.4	0.9	1.7	0.0
September	1.8	1.0	0.9	2.1	-0.1
December	2.1	1.0	1.2	2.2	0.3
2007					
March	2.4	1.2	1.6	2.0	0.5
June	2.2	2.2	1.5	1.8	0.2
September	1.9	2.7	1.2	1.7	0.1
December	1.6	2.6	0.9	1.7	0.1
CHANGE FROM CORRESPONDING QUARTER OF PREVIOUS YEAR (%)					
December 2002	5.1	1.5	2.6	6.3	0.7
December 2003	6.2	12.2	4.2	7.8	2.0
December 2004	7.9	2.6	4.6	6.1	0.8
December 2005	7.8	3.9	4.8	8.3	1.3
December 2006	7.3	2.9	4.1	7.7	0.6
December 2007	8.3	9.0	5.4	7.3	0.8

Note: Reference base of index: 2003–04 = 100.0

Source: National Accounts. See Appendix 1.

	2005	2006				2007			
	December Qtr	March Qtr	June Qtr	September Qtr	December Qtr	March Qtr	June Qtr	September Qtr	December Qtr
	'000	'000	'000	'000	'000	'000	'000	'000	'000
Australia									
Total	81.0	30.1	28.2	20.2	54.2	6.9	7.1	11.3	24.4
% change from previous quarter	64.1	-62.9	-6.4	-28.3	168.4	-87.2	2.9	58.6	115.7
States and territories									
New South Wales	24.7	5.6	16.5	3.5	23.0	0.4	1.7	3.6	1.1
Victoria	33.8	13.4	8.2	12.7	28.7	3.5	2.8	6.4	21.0
Queensland	7.9	6.0	0.5	0.4	0.5	0.5	1.6	0.3	0.6
South Australia	1.3	1.0	0.2	0.5	0.9	2.1	0.6	0.1	—
Western Australia	12.0	2.3	1.1	0.2	0.9	0.5	0.4	0.9	1.3
Tasmania	0.1	0.6	—	0.2	0.1	—	—	—	0.2
Northern Territory	1.1	—	0.5	0.1	—	—	—	—	0.1
Australian Capital Territory	—	1.2	1.2	2.7	—	—	—	—	—
Industry									
Mining									
Coal	1.1	0.1	1.4	1.2	0.2	0.3	1.6	1.5	—
Other	0.1	0.1	0.7	0.5	0.1	—	—	—	—
Manufacturing									
Metal product; Machinery and equipment	15.0	11.0	5.0	10.7	11.3	2.3	2.3	2.2	0.7
Other	6.4	4.1	0.8	1.6	1.3	2.1	1.4	3.7	0.4
Construction	23.0	3.5	4.6	1.0	6.1	1.0	1.2	2.0	2.6
Transport and storage;									
Communication services	5.7	7.1	0.5	0.5	1.0	0.5	0.2	1.0	0.2
Education; Health and community services	25.5	1.3	14.0	2.4	32.1	0.2	0.2	0.3	19.8
Other industries(a)	4.2	2.9	1.1	2.2	2.1	0.6	0.3	0.6	0.7

— nil or rounded to zero (including null cells)

(a) 'Other industries' comprises those industries not included in the specified industry groupings: Agriculture, forestry and fishing; Electricity, gas and water supply; Wholesale trade; Retail trade; Accommodation, cafes and restaurants; Finance and insurance; Property and business services; Government administration and defence; Cultural and recreational services; and Personal and other services.

Source: Industrial Disputes. See Appendix 1.

	2005	2006				2007			
	December Qtr	March Qtr	June Qtr	September Qtr	December Qtr	March Qtr	June Qtr	September Qtr	December Qtr
	'000	'000	'000	'000	'000	'000	'000	'000	'000
Australia									
Total	9.3	3.4	3.2	2.3	6.0	0.8	0.8	1.2	2.6
% change from previous quarter	61.9	-62.9	-7.8	-28.1	164.5	-87.4	1.7	60.6	112.2
States and territories									
New South Wales	8.7	2.0	5.7	1.2	7.9	0.1	0.6	1.2	0.4
Victoria	15.3	6.0	3.7	5.7	12.9	1.5	1.2	2.8	9.1
Queensland	4.6	3.5	0.3	0.2	0.3	0.2	0.8	0.2	0.3
South Australia	2.0	1.5	0.3	0.7	1.4	3.2	1.0	0.2	0.1
Western Australia	13.4	2.5	1.2	0.3	1.0	0.5	0.4	0.9	1.3
Tasmania	0.6	3.4	—	0.9	0.7	—	—	0.1	1.2
Northern Territory	12.4	0.3	5.9	0.7	0.1	—	—	—	1.4
Australian Capital Territory	0.2	7.1	6.7	15.4	0.1	—	—	—	—
Industry									
Mining									
Coal	39.5	3.9	48.1	38.5	6.6	9.7	67.1	62.6	—
Other	0.5	0.7	6.6	5.3	0.9	0.2	—	0.3	—
Manufacturing									
Metal product; Machinery and equipment	38.9	29.8	13.2	28.5	30.6	6.3	6.2	5.9	1.9
Other	10.3	6.7	1.4	2.7	2.1	3.3	2.1	5.9	0.6
Construction	40.1	5.7	7.6	1.6	9.1	1.5	1.7	3.1	3.8
Transport and storage;									
Communication services	10.4	12.4	0.8	0.9	1.7	0.9	0.3	1.7	0.3
Education; Health and community services	15.4	0.8	8.2	1.4	18.8	0.1	0.1	0.1	11.1
Other industries(a)	0.9	0.6	0.2	0.5	0.4	0.1	0.1	0.1	0.1

— nil or rounded to zero (including null cells)

(a) 'Other industries' comprises those industries not included in the specified industry groupings: Agriculture, forestry and fishing; Electricity, gas and water supply; Wholesale trade; Retail trade; Accommodation, cafes and restaurants; Finance and insurance; Property and business services; Government administration and defence; Cultural and recreational services; and Personal and other services.

Source: Industrial Disputes. See Appendix 1.

Period	ORIGINAL									TREND
	New South Wales	Victoria	Queensland	South Australia	Western Australia	Tasmania	Northern Territory	Australian Capital Territory	Australia	Australia
JOB VACANCIES ('000)										
February 2003	39.0	27.2	19.9	7.1	12.0	*2.1	1.8	2.3	111.3	104.9
February 2004	37.3	29.0	18.4	5.5	10.2	1.4	1.8	2.2	105.7	110.8
February 2005	48.2	33.0	35.4	8.8	15.3	2.6	2.3	4.0	149.5	142.8
2006										
February	46.6	31.6	32.3	8.4	20.6	2.1	1.9	3.8	147.3	143.9
May	41.7	32.8	36.8	10.8	21.2	2.4	2.4	3.9	152.0	151.3
August	42.5	31.6	39.8	9.0	22.6	2.3	2.6	4.7	155.0	156.6
November	47.7	31.6	38.8	9.4	23.9	2.5	2.7	4.5	161.1	159.8
2007										
February	48.2	32.1	38.7	9.9	25.0	2.5	2.5	4.8	163.7	163.3
May	51.9	31.8	35.6	10.2	27.0	2.3	2.4	5.3	166.5	168.7
August	51.7	31.6	38.5	10.0	29.7	2.8	2.8	6.1	173.1	173.8
November	55.5	36.1	37.3	9.4	32.6	2.6	3.5	5.9	182.8	177.9
2008										
February	54.7	36.2	38.6	9.8	27.1	*2.6	4.2	4.9	178.0	180.3
CHANGE FROM PREVIOUS QUARTER (%)										
2006										
February	2.8	4.6	34.0	-3.4	30.4	-12.3	-8.2	-4.8	11.1	4.1
May	-10.5	3.8	14.0	27.5	2.8	18.6	22.0	5.0	3.2	5.1
August	1.9	-3.6	8.3	-16.2	6.2	-6.6	8.4	18.3	2.0	3.5
November	12.1	0.1	-2.5	4.1	6.0	10.2	5.4	-3.9	3.9	2.0
2007										
February	1.2	1.7	-0.4	5.3	4.8	1.3	-7.6	6.0	1.7	2.2
May	7.6	-0.9	-8.0	2.9	7.7	-9.6	-4.3	11.9	1.7	3.3
August	-0.5	-0.7	8.2	-1.8	10.2	19.7	15.5	14.9	4.0	3.0
November	7.4	14.2	-3.2	-6.3	9.6	-6.9	28.0	-2.8	5.6	2.4
2008										
February	-1.4	0.4	3.5	4.7	-16.8	1.4	18.1	-18.4	-2.6	1.3
CHANGE FROM CORRESPONDING QUARTER OF PREVIOUS YEAR (%)										
February 2003	62.8	-3.2	18.1	0.4	40.3	43.1	45.7	-44.1	21.9	14.4
February 2004	-4.4	6.6	-7.6	-21.9	-14.5	-33.7	0.2	-5.4	-5.0	5.6
February 2005	29.2	14.0	92.7	58.7	49.1	91.2	28.5	82.0	41.4	28.9
February 2006	-3.2	-4.5	-8.9	-3.5	35.1	-22.0	-14.3	-6.2	-1.5	0.8
February 2007	3.5	1.8	19.8	17.2	21.3	23.6	28.8	26.6	11.2	13.5
February 2008	13.3	12.7	-0.2	-0.8	8.3	2.1	67.1	2.0	8.7	10.4

* estimate has a relative standard error of 25% to 50% and should be used with caution

Source: Survey of Job Vacancies. See Appendix 1.

EXPLANATORY NOTES

INTRODUCTION

1 *Australian Labour Market Statistics* brings together a range of ABS labour statistics to present a statistical summary of the Australian labour market. It has been developed primarily as a reference document, and provides a broad basis for labour analysis and research.

2 In addition to data from the Labour Force Survey (LFS), this publication contains statistics from a range of other ABS labour surveys including Average Weekly Earnings, the Labour Price Index, Job Vacancies, Employment and Earnings – Public Sector, and Industrial Disputes. The publication also includes summary data from recently released labour force supplementary surveys.

3 This publication includes international data for selected labour market indicators.

LABOUR STATISTICS CONCEPTS, SOURCES AND METHODS

4 The concepts and definitions underpinning ABS labour statistics align closely with the standards and guidelines set out in Resolutions of the International Conference of Labour Statisticians. Descriptions of the underlying concepts of Australia's labour market statistics, and the sources and methods used in compiling the estimates, are presented in *Labour Statistics: Concepts, Sources and Methods* (cat. no. 6102.0.55.001), which is available on the ABS website at <<http://www.abs.gov.au>> [Themes – People – Labour – *Labour Statistics: Concepts, Sources and Methods*].

5 For an explanation of terms used in this publication, refer to the Glossary.

LABOUR STATISTICS THEME PAGE

6 The Labour Statistics theme page is a portal to all labour statistics and related information residing on the ABS website. The page contains hyperlinks to *Labour Statistics: Concepts, Sources and Methods* (cat. no. 6102.0.55.001); information about labour related surveys; and a help page for respondents to ABS labour related surveys. The Labour Theme Page can be accessed at <<http://www.abs.gov.au>> [Themes – People – Labour].

TREND ESTIMATES

7 Series in this publication include *original* and *trend* series. Special care should be taken in interpreting data for the most recent months and quarters, as some of the original and all of the trend series are subject to revision.

8 It is not uncommon for movements in original time series data and those provided from trend series to differ. Movements in a time series of original data may reflect several factors, including:

- longer-term changes in the item being measured (i.e. trend movements)
- short-term irregular changes
- regular seasonal influences
- normal 'trading', 'working' or 'pay' day patterns
- systematic holiday effects.

9 Trend estimates help the user to identify the underlying magnitude and direction of a time series. Seasonal adjustment removes the effect of the last three listed influences from the data, leaving only trend and short-term irregular movements. Trend estimates are then obtained by removing the effects of the short-term irregularities, which in some series can be a major contributor to movements in the original data.

10 Trend estimates are produced by smoothing the seasonally adjusted series using a statistical procedure based on Henderson moving averages. At each time point in a series, a trend estimate is calculated using a centred x-term Henderson moving average of the seasonally adjusted series. The moving averages are centred on the point in time at which the trend is being estimated. The number of terms used to calculate the trend varies across surveys. Generally, ABS monthly surveys use a 13-term moving average and quarterly surveys use a 7-term moving average.

EXPLANATORY NOTES *continued*

TREND ESTIMATES *continued*

11 Estimates for the most recent time points cannot be calculated using the centred average method as there are insufficient data to do so. Instead, alternative approaches that approximate the smoothing properties of the Henderson moving average are used. This can lead to revision in the trend estimates for the most recent time periods until sufficient data are available to calculate the trend using the centred Henderson moving average. Revisions of trend estimates will also occur with revisions to the original data and re-estimation of seasonal adjustment factors.

12 Seasonal factors are reviewed at least annually for ABS labour series, to take account of additional original data. The results of the latest reviews were used to compile the trend estimates given in this publication. For further information about the most recent reviews of seasonal factors for the labour surveys, see the following publications:

- for labour force see *Labour Force, Australia* (cat. no. 6202.0)
- for labour price index see *Labour Price Index, Australia* (cat. no. 6345.0)
- for average weekly earnings see *Average Weekly Earnings, Australia* (cat. no. 6302.0)
- for public sector employees see *Wage and Salary Earners, Public Sector, Australia* (cat. no. 6248.0.55.001)
- for job vacancies see *Job Vacancies, Australia* (cat. no. 6354.0).

13 The general methods used in the ABS for estimating trends are described in *Information Paper: A Guide to Interpreting Time Series – Monitoring Trends* (cat. no. 1349.0).

RELIABILITY OF ESTIMATES

14 Estimates in this publication are subject to two types of error:

- sampling error – errors that occur because the data were obtained from a sample rather than the entire population
- non-sampling error – errors that occur at any stage of a survey and can also occur in a census, e.g. incorrect responses to questions, processing errors, frame deficiencies.

15 For more information on these sources of error, and on measures of these types of errors, including standard errors, refer to the main publications associated with each of the data series presented in this publication (see the relevant sections later in these Explanatory Notes). More information on standard errors applying to LFS estimates is contained in *Information Paper: Labour Force Survey Standard Errors, 2005* (cat. no. 6298.0). To assist users, a spreadsheet incorporating the revised standard error models using composite estimation is available from *Labour Force Survey Standard Errors, Data Cube, 2007* (cat. no. 6298.0.55.001).

ROUNDING

16 Estimates have been rounded and discrepancies may occur between sums of the component items and totals.

LABOUR FORCE SURVEY DATA *Description of the survey*

17 Data in tables 1.1–1.7, 2.1–2.10, 3.1–3.3, 4.3, 4.4 and 4.5 are obtained from the Labour Force Survey (LFS), which provides extensive information about the labour market on a monthly basis. The LFS is a component of the Monthly Population Survey (MPS), which includes the LFS and supplementary surveys.

Monthly Population Survey

18 The MPS is a population survey based on a multi-stage area sample of private dwellings (currently about 30,000 houses, flats, etc.), and list samples of discrete Indigenous communities and non-private dwellings (hospitals, hotels, motels, etc.), and covers about 0.45% of the population of Australia. The information is obtained from occupants of selected dwellings by interviewers, with the first interview conducted face-to-face and subsequent interviews over the telephone. Once selected, households are included for eight consecutive months before being replaced.

EXPLANATORY NOTES *continued*

Labour Force Survey

19 The LFS has been conducted on a monthly basis since February 1978. Prior to that, from 1964 to 1978, a national survey was conducted quarterly. Telephone interviewing was introduced between August 1996 and February 1997. New questionnaires have been introduced periodically, most recently in April 2001.

20 The LFS includes all usual residents of Australia aged 15 and over except:

- members of the permanent defence forces
- certain diplomatic personnel of overseas governments, customarily excluded from census and estimated population counts
- overseas residents in Australia
- members of non-Australian defence forces (and their dependants) stationed in Australia.

21 From July 1993, Jervis Bay Territory has been excluded from the scope of the LFS.

Supplementary surveys

22 The supplementary surveys collect additional data on a different topic each month. Many topics covered are rotated on an annual or less frequent basis, while others are included once only. Results from each supplementary survey topic are released separately. A list of topics covered in recent years is in Appendix 3.

23 Tables 4.1, 4.2 and 4.3 contain data from the annual supplementary surveys Underemployed Workers and Persons Not in the Labour Force. These tables are updated annually.

24 The supplementary surveys include a subset of the persons included in the LFS (see paragraph 20). The additional exclusions for most supplementary surveys are:

- persons living in private dwellings in remote and sparsely settled parts of Australia
- institutionalised persons
- boarding school pupils.

Multi-Purpose Household Survey

25 The Multi-Purpose Household Survey (MPHS) was introduced in 2004–05. This survey vehicle is designed to provide statistics annually for a number of small, self contained topics, including a number of labour related topics. Data for MPHS topics are collected each month over a financial year. A list of topics covered in recent years is in Appendix 3.

26 In addition to those already excluded from the LFS, the following people are excluded from most MPHS topics:

- people under 15 years
- people living in private dwellings in very remote parts of Australia
- people living in non-private dwellings such as hotels, university residences, students at boarding schools, patients in hospitals, residents of homes (e.g. retirement homes, homes for people with disabilities) and inmates of prisons
- visitors to private dwellings.

27 Depending on the topic, there may be further exclusions from scope. For example, some MPHS topics collect information only from a certain population or interest group (e.g. information on retirement and retirement intentions is collected from people aged 45 years or over).

Reference period

28 Interviews are generally conducted during the two weeks beginning on the Monday between the 6th and 12th of each month, with questions relating to the week prior to the interview (the reference week).

Notes on data

29 From time to time, changes to survey methodology affect the time series produced. Some examples of changes to this survey are: new questions added to the LFS questionnaire in April 2001; and the introduction of telephone interviewing in 1996–97.

EXPLANATORY NOTES *continued*

Notes on data continued

30 In February 2004 the definition of unemployed persons was changed to include all persons who were waiting to start work and were available to start in the reference week, with consequent revisions to data from April 2001 to January 2004. For further details, see *Information Paper: Forthcoming Changes to Labour Force Statistics, 2003* (cat. no. 6292.0).

31 In May 2007, an improved method of estimation, known as composite estimation, was introduced into the Labour Force Survey. In introducing this change the ABS revised unit record data from April 2001 to April 2007 based on the new estimation method. While estimates for periods prior to April 2001 are unrevised and were compiled using a different estimation method, no trend break was identified in the employed persons series. Also, no change was identified in the trend breaks in the unemployed persons and unemployment rate series which arose with the introduction of a redesigned survey form in April 2001. For further details, see *Information Paper: Forthcoming Changes to Labour Force Statistics, 2007* (cat. no. 6292.0).

Population benchmarks

32 Labour Force Survey estimates are calculated in such a way as to add up to independent estimates of the civilian population aged 15 years and over (population benchmarks). These population benchmarks are projections of the most recently released quarterly Estimated Resident Population (ERP) data. For information on the methodology used to produce the ERP see *Australian Demographic Statistics Quarterly* (cat. no. 3101.0). To create the population benchmarks for the Labour Force Survey, the most recently released quarterly ERP estimates are projected forward one quarter past the period for which they are required. The projection is based on the historical pattern of each population component - births, deaths, interstate migration and overseas migration. By projecting one quarter past that needed for the current population benchmarks, demographic changes are smoothed in, thereby making them less noticeable in the population benchmarks.

33 The ERP series are revised annually in the March quarter issue of *Australian Demographic Statistics Quarterly* (cat. no. 3101.0), released in September each year, to incorporate more up to date information available for the population components. The revised ERP estimates are used to update the quarterly population projections used in creating the Labour Force Survey population benchmarks. Benchmarks already used in producing the Labour Force Survey estimates are not updated. A process of smoothing is used in the creation of population benchmarks to reduce the effect of these annual revisions to ERP estimates on the Labour Force Survey population benchmarks.

34 Every five years the ERP series are revised to incorporate additional information available from the latest Census of Population and Housing. Following the incorporation of Census information, the ERP series prior to the latest Census are final and subject to no further revision. Labour Force Survey population benchmarks, and the estimates, are revised following this 5-yearly revision in the ERP. From the February 2004 issue of this publication, labour force estimates have been compiled using population benchmarks based on the results of the 2001 Census of Population and Housing. Revisions were made in that issue to historical labour force estimates from January 1999 to January 2004.

Estimation method

35 The estimation method used in the Labour Force Survey is Composite Estimation, which was introduced in May 2007. Composite Estimation combines data collected in the previous six months with current month's data to produce the current month's estimates, thereby exploiting the high correlation between overlapping samples across months in the Labour Force Survey. The Composite Estimator combines the previous and current months' data by applying different factors according to length of time in the survey. After these factors are applied, the seven months of data are weighted to align with current month population benchmarks. For details see *Information Paper: Forthcoming Changes to Labour Force Statistics, 2007* (cat. no. 6292.0).

EXPLANATORY NOTES *continued*

Families series

36 Family relationship is not determined for all households and persons in scope of the LFS. This is due to a number of factors related to the scope and coverage of the LFS, as well as difficulties in determining family structure and characteristics. The survey questions used to determine family relationships are restricted to persons enumerated as usual residents of private dwellings. That is, the following persons are excluded:

- all persons enumerated in non-private dwellings (including hotels, motels, hospitals and other institutions)
- persons enumerated as visitors to (rather than usual residents of) private dwellings.

37 In addition, in those households where it is not possible to obtain information relating to all the usual residents, no family information is recorded. Thus, persons living in households that include a member of the permanent defence forces, who is outside the scope of the LFS, are excluded from survey questions used to determine family relationships. This also applies to households that, at the time of the survey, had one or more of their usual residents away for more than six weeks, and households from which an incomplete or inadequate questionnaire was obtained for any usual resident in scope of the survey.

Further information and data on the LFS

38 LFS estimates are published monthly in *Labour Force, Australia* (cat. no. 6202.0). A series of time series spreadsheets are released at the same time as this publication under cat. no. 6202.0.55.001. More detailed estimates are released, in electronic format, one week later, under cat. no. 6291.0.55.001 for monthly data, or cat. no. 6291.0.55.003 for quarterly data. All electronic data can be accessed via the ABS website at <<http://www.abs.gov.au>>. Additional data are available on request.

39 For further information about the range of LFS products and services, and the concepts and methodology used in the LFS, refer to *Information Paper: Changes to Labour Force Survey Products* (cat. no. 6297.0), *Labour Statistics: Concepts, Sources and Methods* (cat. no. 6102.0.55.001), or contact the Assistant Director, Labour Force Survey on Canberra (02) 6252 6565.

INTERNATIONAL DATA

40 Table 1.8 contains data from the International Labour Organisation.

41 Estimates of key indicators of the labour markets from various countries have been included for comparison with Australian estimates of labour force participation, employment, unemployment and unemployment rates.

EMPLOYER SURVEY DATA

42 Tables 2.11, 5.1–5.3, 6.1–6.2 and 7.1 of this publication contain data from ABS employer surveys.

Scope of employer surveys

43 Except where otherwise noted, the sample for ABS labour employer surveys is selected from the ABS Business Register, which is primarily based on registrations to the Australian Taxation Office's (ATO) Pay As You Go Withholding scheme. The population is updated quarterly to take account of new businesses, businesses that have ceased employing, changes in employment levels, changes in industry, and other general business changes. Businesses excluded from the scope of the employer surveys are:

- those primarily engaged in Agriculture, forestry and fishing (except for the Survey of Employment and Earnings)
- private households employing staff
- overseas embassies, consulates, etc.
- those located outside Australia.

PUBLIC SECTOR EMPLOYEES DATA

44 Table 2.11 contains employment data from the Survey of Employment and Earnings – Public Sector (SEE).

Description of the survey

EXPLANATORY NOTES *continued*

<i>Description of the survey continued</i>	45 The Survey of Employment and Earnings has been conducted on a quarterly basis since the September quarter 1983. The survey measures both the number of public sector wage and salary earners employed in the middle month of each quarter and their total quarterly earnings.
<i>Reference period</i>	46 The reference period for employment is the last pay period ending on or before the third Friday of the middle month of the quarter.
<i>Notes on data</i>	<p>47 The private sector component of the Survey of Employment and Earnings was discontinued after the December quarter 2001.</p> <p>48 The privatisation of Telstra Corporation in November 2006 significantly impacted the public sector employment series. Telstra Corporation was effectively privatised on 20 November 2006. For the purpose of ABS statistics this change from public sector to private sector is effective from March quarter 2007. For more information please see <i>Information Paper: Future Treatment of Telstra in ABS Statistics, 2007</i> (cat. no. 8102.0).</p> <p>49 As a result of privatisation, Telstra Corporation was no longer in the scope of SEE, and Telstra data were excluded from the series from March quarter 2007. As a result, a trend break was applied to the Commonwealth government and total public sector employees series between November 2006 and February 2007.</p>
<i>Further information</i>	50 For further information about data relating to public sector employees, and the concepts and methodology used, refer to <i>Wage and Salary Earners, Public Sector, Australia</i> (cat. no. 6248.0.55.001), and <i>Labour Statistics: Concepts, Sources and Methods</i> (cat. no. 6102.0.55.001), or contact the Manager, Survey of Employment and Earnings, Public Sector on Perth (08) 93603141.
WAGE PRICE INDEX DATA	51 Table 5.1 contains data from the <i>Labour Price Index, Australia</i> (cat. no. 6345.0) publication.
<i>Description of the survey</i>	52 The Labour Price Index measures change in the price of labour in the Australian labour market, unaffected by changes in the quality or quantity of work performed. i.e. it is unaffected by changes in the composition of the labour force, hours worked, or changes in characteristics of employees (e.g. work performance). In the LPI, index numbers are compiled for a range of wage and non-wage costs. Information about the wage price indexes has been released for each quarter since September 1997. Approximately 20,000 matched jobs from 4,800 businesses are priced each quarter.
<i>Reference period</i>	53 The reference period for the survey is the last pay period ending on or before the third Friday of the mid-month of the quarter.
<i>Further information</i>	54 For further information about the range of products and services relating to the Wage Price Index, and the concepts and methodology used, refer to <i>Labour Price Index, Australia</i> (cat. no. 6345.0), <i>Labour Price Index, Concepts, Sources and Methods</i> (cat. no. 6351.0.55.001), the associated time series spreadsheets available from the ABS website, or contact the Manager, Labour Price Index on Perth (08) 9360 5151.
AVERAGE WEEKLY EARNINGS DATA	55 Table 5.2 contains data from the Survey of Average Weekly Earnings (AWE).
<i>Description of the survey</i>	56 The Survey of Average Weekly Earnings has been conducted quarterly since August 1981. Approximately 5,500 businesses contribute to the survey each quarter. The purpose of the survey is to measure average gross weekly earnings of employee jobs in Australia.

EXPLANATORY NOTES *continued*

Description of the survey *continued*

57 Average weekly earnings statistics represent average gross (before tax) earnings of employees and do not relate to average award rates nor to the earnings of the 'average person'. Estimates of average weekly earnings are derived by dividing estimates of weekly total earnings by estimates of number of employees. Changes in the averages may be affected not only by changes in the level of earnings of employees but also by changes in the overall composition of the wage and salary earner segment of the labour force.

Reference period

58 The reference period for the survey is the last pay period ending on or before the third Friday of the middle month of the quarter. For non-weekly payrolls, businesses are asked to provide one week's portion.

Notes on data

59 The privatisation of Telstra Corporation in November 2006 has significantly impacted on the private sector and public sector average weekly earnings series. Telstra Corporation was effectively privatised on 20 November 2006. For the purposes of ABS statistics this change from public sector to private sector is effective from March quarter 2007. The effect of this change is significant for both the private sector and public sector series. As a result, a trend break has been applied to both series between November 2006 and February 2007. For more information please see *Information Paper: Future Treatment of Telstra in ABS Statistics, 2007* (cat. no. 8102.0).

Further information

60 For further information about average weekly earnings statistics and the concepts and methodology used refer to *Average Weekly Earnings, Australia* (cat. no. 6302.0), and *Labour Statistics: Concepts, Sources and Methods* (cat. no. 6102.0.55.001), or contact the Manager, Survey of Average Weekly Earnings on Perth (08) 9360 5304.

NATIONAL ACCOUNTS DATA

61 Table 5.3 contains data from the Australian National Accounts.

62 Estimates of compensation of employees are contained within the Income Accounts of the Australian National Accounts, which are published in *Australian System of National Accounts* (cat. no. 5204.0) and *Australian Economic Indicators* (cat. no. 1350.0). For further information on how estimates are obtained, see *Australian System of National Accounts: Concepts, Sources and Methods* (cat. no. 5216.0).

INDUSTRIAL DISPUTES DATA

Description of the survey

64 The ABS has been collecting information about industrial disputes since 1913. The Industrial Disputes collection produces estimates of the number of industrial disputes (where ten or more working days are lost), employees involved, and working days lost.

65 The scope of the Industrial Disputes collection is restricted to employing businesses at which an industrial dispute has occurred. For this collection, industrial disputes are defined as work stoppages of ten working days or more. Ten working days are equivalent to the amount of ordinary time worked by ten people in one day, regardless of the length of the stoppage, e.g. 3,000 workers on strike for two hours would be counted as 750 working days lost (assuming they work an eight-hour day).

66 Effects on other establishments not directly involved in the dispute, such as stand-downs because of lack of materials, disruption of transport services, power cuts, etc. are not included in the scope of this collection.

Reference period

67 The collection reference period is the calendar quarter.

Further information

68 For further information about industrial disputes statistics, and the concepts and methodology used, refer to the electronic publication *Industrial Disputes, Australia* (cat. no. 6321.0.55.001), and *Labour Statistics: Concepts, Sources and Methods* (cat. no. 6102.0.55.001), or contact the Manager, Industrial Disputes on Perth (08) 9360 5159.

EXPLANATORY NOTES *continued*

JOB VACANCIES DATA

Description of the survey

69 Table 7.1 contains data from the Job Vacancies Survey (JVS).

70 The current Job Vacancies Survey has been conducted since November 1983 and is a quarterly sample survey of approximately 5,000 employers. The survey produces estimates of the number of job vacancies in Australia.

Reference date

71 The reference date for the survey is the third Friday of the middle month of the quarter.

Notes on data

72 Prior to the August quarter 1999, job vacancies statistics were collected as part of the Job Vacancies and Overtime Survey. The overtime component of the survey ceased following the May quarter 1999.

73 The privatisation of Telstra Corporation in November 2006 impacted the private sector and public sector job vacancies series. For the purposes of ABS statistics this change from public sector to private sector was effective from March quarter 2007. For more information please see *Information Paper: Future Treatment of Telstra in ABS Statistics, 2007* (cat. no. 8102.0).

74 Although the privatisation of Telstra Corporation in November 2006 impacted on both the private and public sector series, the effect was significant only for the public sector series. As a result, a trend break was applied to the public sector series between November 2006 and February 2007.

Further information

75 For further information about the range of products and services relating to ABS job vacancies statistics, and the concepts and methodology used, refer to *Job Vacancies, Australia* (cat. no. 6354.0), *Labour Statistics: Concepts, Sources and Methods* (cat. no. 6102.0.55.001), the associated time series spreadsheets available from the ABS website, or contact the Manager, Job Vacancies Survey on Perth (08) 9360 5304.

APPENDIX 1 DATA SOURCES FOR TABLES

HOW TO FIND DATA SOURCES

All ABS statistics can be downloaded free of charge from the ABS website.

To find a labour market related publication, spreadsheet or datacube on the ABS website, go to <<http://www.abs.gov.au>> [Statistics – By Catalogue Number – 6. Labour Statistics and Prices]. All products can be accessed by catalogue number and subject e.g. to find the publication *Labour Force, Australia* (cat. no. 6202.0), look under '62. Labour force'. Select '6202.0 – Labour Force, Australia' and from the Summary tab select the Details tab.

No.	Table description	Data source	Notes
1.1	Labour force status: trend series	Labour Force, Australia (cat. no. 6202.0)	
		6202.0.55.001 spreadsheet table 1	
1.2	Age by marital status	6291.0.55.001 spreadsheet table 1	
1.3	States and territories	Labour Force, Australia (cat. no. 6202.0)	Excludes Capital city/balance of state
		6291.0.55.001 spreadsheet table 2	
1.4	Educational attendance	6291.0.55.001 spreadsheet table 3	More detailed Age
1.5	Country of birth	6291.0.55.001 data cube LM4	Includes Sex, State, less detailed Country of birth
		6291.0.55.001 data cube LM5	Includes Sex, Age, State, less detailed Country of birth
		6291.0.55.001 data cube LM6	Includes Sex, State
		6291.0.55.001 data cube LM7	Includes Sex, State, less detailed Country of birth
	Year of arrival	6291.0.55.001 data cube LM4	Includes Sex, State, less detailed Country of birth
		6291.0.55.001 data cube LM7	Includes Sex, State, less detailed Country of birth
1.6	Relationship in household	6291.0.55.001 data cube FM1	Includes State
		6291.0.55.001 data cube FM2	Includes Age
		6291.0.55.001 data cube FM3	Includes Hours worked
		6291.0.55.001 data cube FM4	Unemployed persons only, includes Duration of unemployment
1.7	Families	6224.0.55.001 data cube FA2	June data only
1.8	International comparisons	International Labour Organisation, Year Book of Labour Statistics 1998, 2000, 2001 and 2002	
		International Labour Organisation, Key Indicators of the Labour Market 2001–02	
		International Labour Organisation, LABORSTA database: http://laborsta.ilo.org	
2.1	Industry: trend	6291.0.55.003 spreadsheet table 4	Includes Employed full-time, Employed part-time
2.2	Industry: divisions and subdivisions	6291.0.55.003 spreadsheet table 6	
		6291.0.55.003 data cube E03	Includes Sex, State, Hours worked, less detailed Industry
		6291.0.55.003 data cube E05	Includes Sex, Age, Status in employment, Hours worked
		6291.0.55.003 data cube E06	Includes Sex, State, Status in employment, Hours worked, more detailed Industry
2.3	Occupation	6291.0.55.003 spreadsheet table 7	Less detailed Occupation
		6291.0.55.003 spreadsheet table 12	Includes Hours worked, less detailed Occupation
		6291.0.55.003 data cube E07	Includes Age, Hours worked, Status in employment
		6291.0.55.003 data cube E08	Includes State, Status in employment, more detailed Occupation
2.4	Industry and occupation by full-time/part-time status	6291.0.55.003 data cube E09	Includes State, Hours worked

APPENDIX 1 DATA SOURCES FOR TABLES *continued*

No.	Table description	Data source	Notes
2.5	Industry by status in employment	6291.0.55.003 data cube E04	Includes Sex, State, excludes Industry
		6291.0.55.003 data cube E05	Includes Sex, Age, more detailed Industry
		6291.0.55.003 data cube E06	Includes Sex, State, more detailed Industry
	Occupation by status in employment	6291.0.55.003 data cube E04	Includes Sex, State, excludes Occupation
		6291.0.55.003 data cube E07	Includes Sex, Age, more detailed Occupation
		6291.0.55.003 data cube E08	Includes Sex, State, more detailed Occupation
	Hours worked in all jobs by status in employment	6291.0.55.001 spreadsheet table 8	Excludes Hours worked, includes Sex, Employed full-time, Employed part-time
		6291.0.55.003 spreadsheet table 13	Includes Sex
		6291.0.55.003 data cube E04	Includes Sex, State
		6291.0.55.003 data cube E05	Includes Sex, Age, Industry
		6291.0.55.003 data cube E06	Includes Sex, State, Industry
		6291.0.55.003 data cube E07	Includes Sex, Age, Occupation
		6291.0.55.003 data cube E08	Includes Sex, State, Occupation
2.6	Average hours worked in all jobs by Industry	6291.0.55.003 spreadsheet table 11	
		6291.0.55.003 data cube E03	Includes State
		6291.0.55.003 data cube E05	Includes Age, Status in employment, more detailed Industry
		6291.0.55.003 data cube E06	Includes State, Status in employment, more detailed Industry
		6291.0.55.003 data cube E09	Includes State, Occupation
	Average hours worked in all jobs by occupation	6291.0.55.003 spreadsheet table 12	
		6291.0.55.003 data cube E07	Includes Age, Status in employment, more detailed Occupation
		6291.0.55.003 data cube E08	Includes State, Status in employment, more detailed Occupation
		6291.0.55.003 data cube E09	Includes State, Industry
2.7	Actual hours worked in all jobs	6291.0.55.001 spreadsheet table 9	
		6291.0.55.003 spreadsheet table 11	Includes Industry
		6291.0.55.003 spreadsheet table 12	Includes Occupation
		6291.0.55.003 spreadsheet table 13	Includes Status in employment
		6291.0.55.001 data cube EM1	Includes Age, State
		6291.0.55.003 data cube E03	Includes State, Industry
		6291.0.55.003 data cube E04	Includes State, Status in employment
2.8	Actual hours worked in all jobs	6291.0.55.001 spreadsheet table 9	
		6291.0.55.003 spreadsheet table 11	Includes Industry
		6291.0.55.003 spreadsheet table 12	Includes Occupation
		6291.0.55.003 spreadsheet table 13	Includes Status in employment
		6291.0.55.001 data cube EM1	Includes Age, State
		6291.0.55.003 data cube E03	Includes State, Industry
		6291.0.55.003 data cube E04	Includes State, Status in employment
	Usual hours worked in all jobs	6291.0.55.001 spreadsheet table 10	
		6291.0.55.001 data cube EM3	Includes Age, State
		6291.0.55.001 data cube E10	Includes State, Industry
2.9	Full-time workers who worked less than 35 hours in all jobs	6291.0.55.001 data cube EM2	Includes Age, State, Hours worked
2.10	Future employment expectations by job tenure	6291.0.55.003 data cube E02	Excludes Future employment expectations, Includes Job tenure, State, Age

APPENDIX 1 DATA SOURCES FOR TABLES *continued*

No.	Table description	Data source	Notes
2.11	Public sector employees	Wage and Salary Earners, Public Sector, Australia (cat. no. 6248.0.55.001)	
	Public sector employees: Australia totals	6248.0.55.001 spreadsheet table 1	Includes State
	Public sector employees by level of government: trend	6248.0.55.001 spreadsheet table 2	Includes Commonwealth government, State, seasonally adjusted and original data
		6248.0.55.001 spreadsheet table 3	Includes State government, State, seasonally adjusted and original data
		6248.0.55.001 spreadsheet table 4	Includes Local government, State, seasonally adjusted and original data
	Public sector employees by State: trend	6248.0.55.001 spreadsheet table 1	Includes seasonally adjusted and original data
		6248.0.55.001 spreadsheet table 2	Includes Commonwealth government, seasonally adjusted and original data
		6248.0.55.001 spreadsheet table 3	Includes State government, seasonally adjusted and original data
		6248.0.55.001 spreadsheet table 4	Includes Local government, seasonally adjusted and original data
		6248.0.55.001 spreadsheet table 7a	Includes Industry
	Public sector employees by industry: original	6248.0.55.001 spreadsheet table 7a	Includes State
3.1	Unemployed persons: duration of unemployment by age	6291.0.55.001 data cube UM2	Excludes Age, median Duration of unemployment
		6291.0.55.001 data cube UM3	Excludes median Duration of unemployment
3.2	Long-term unemployed	6291.0.55.001 spreadsheet table 15	
		6291.0.55.001 data cube UM2	Excludes trend data, includes State, more detailed Duration of unemployment
		6291.0.55.001 data cube UM3	Excludes trend data, includes State, Age
3.3	Unemployed persons: reason for unemployment by industry of last job	6291.0.55.003 data cube UQ1	Excludes Industry of last job
		6291.0.55.003 data cube UQ2	Excludes Reason for unemployment
	Unemployed persons: reason for unemployment by occupation of last job	6291.0.55.003 data cube UQ1	Excludes Occupation of last job
		6291.0.55.003 data cube UQ3	Excludes Reason for unemployment
4.1	Underutilised labour	6105.0 spreadsheet table 1	
4.2	Underutilised labour	6105.0 spreadsheet table 1	
4.3	Underutilised labour	6105.0 spreadsheet table 1	
4.4	Part-time workers	6291.0.55.003 data cube E01	Less detailed Hours worked
4.5	Persons not in the labour force	6291.0.55.001 data cube NM1	
5.1	Labour price index	Labour Price Index, Australia (cat. no. 6345.0)	
	Labour price index: trend data	6345.0 spreadsheet table 1	
	Labour price index: Australia, states and territories	6345.0 spreadsheet table 2b	
	Labour price index: private sector	6345.0 spreadsheet table 3b	Includes States and territories
	Labour price index: public sector	6345.0 spreadsheet table 4b	Includes States and territories
	Labour price index: industry	6345.0 spreadsheet table 5b	Includes Sector
	Labour price index: occupation	6345.0 spreadsheet table 7b	Includes Sector

APPENDIX 1 DATA SOURCES FOR TABLES *continued*

No.	Table description	Data source	Notes
5.2	Average weekly earnings	Average Weekly Earnings, Australia (cat. no. 6302.0)	
	Average weekly earnings by sex	6302.0 spreadsheet table 1	Includes Full-time adult total earnings
	Average weekly earnings: private sector	6302.0 spreadsheet table 4	Includes Full-time adult total earnings
	Average weekly earnings: public sector	6302.0 spreadsheet table 7	Includes Full-time adult total earnings
5.3	Compensation of employees	Australian National Accounts: National Income, Expenditure and Product (cat. no. 5206.0)	
6.1	Industrial disputes: working days lost	Industrial Disputes, Australia (cat. no. 6321.0.55.001)	
	Industrial disputes: working days lost by state	6321.0.55.001 spreadsheet table 3a	
	Industrial disputes: working days lost by industry	6321.0.55.001 spreadsheet table 2a	
6.2	Industrial disputes: working days lost per 1,000 employees	Industrial Disputes, Australia (cat. no. 6321.0.55.001)	
	Industrial disputes: working days lost per 1,000 employees by state	6321.0.55.001 spreadsheet table 3b	
	Industrial disputes: working days lost per 1,000 employees by industry	6321.0.55.001 spreadsheet table 2b	
7.1	Job vacancies	Job Vacancies, Australia (cat. no. 6354.0)	
	Job vacancies: Australia, states and territories	6354.0 spreadsheet table 1	

APPENDIX 2 LIST OF ARTICLES

January 2008	Spotlight: First job starters Technical report: Jurisdictional coverage of pay-setting arrangements
October 2007	Spotlight: Available labour of the unemployed Technical report: Census and the Labour Force Survey
July 2007	Spotlight: Employment type
April 2007	Spotlight: Methods of setting pay Spotlight: Updated volume measures of labour underutilisation
January 2007	Technical report: ABS measures of employee remuneration
October 2006	Changes in where people work over time
July 2006	Job search experience of unemployed people Labour force transitions Spotlight: Employment type
April 2006	Spotlight: Updated volume measures of labour underutilisation
January 2006	Labour outcomes of migrants The relationship between GDP and employment Spotlight: Long-term unemployment
October 2005	Job starters Comparison of ABS measures of employee remuneration Spotlight: Employment type Technical report: Standard error models for the Labour Force Survey Technical report: Proposals from the review of ABS working arrangements statistics
July 2005	Full-time and part-time participation in Australia: a cohort analysis Population, participation and productivity: contributions to Australia's economic growth Spotlight: Employee share schemes Technical report: Changes to coding processes for industry and occupation in the Labour Force Survey
April 2005	People who work few hours Health, disability, age and labour force participation Spotlight: Methods of setting pay Spotlight: Annual measures of labour underutilisation
January 2005	Labour force participation in Australia Experimental estimates of the average age at withdrawal from the labour force Spotlight: Employment in information and communication technology (ICT) Spotlight: Labour Price Index Technical report: Implementation of computer assisted interviewing in the Labour Force Survey
October 2004	Changes in types of employment Mature age people and the labour force

APPENDIX 2 LIST OF ARTICLES *continued*

July 2004	Children living without an employed parent Labour underutilisation Spotlight: Industrial disputes Technical report: Labour Force Survey regions
April 2004	Job search experience: methods and barriers in finding jobs Trade union membership Spotlight: Occupation Technical report: Improvements to Labour Force estimates
January 2004	Employment in information and communication technology Labour force participation: international comparison Technical report: Changes to Labour Force Survey seasonal adjustment processes
October 2003	Labour market transitions of teenagers Spotlight: Country of birth Spotlight: Multiple job holders Technical report: New Labour Force Survey sample selections: analysis of the effort on estimates
July 2003	Experimental volume measures of labour underutilisation Unemployment and participation rates in Australia: a cohort analysis Spotlight: Population, participation and productivity: contributions to Australia's economic growth Technical report: Measures of weekly hours worked
April 2003	Do job vacancies provide a leading indicator of employment growth? Characteristics of underemployed workers Spotlight: Parental leave Spotlight: Methods of setting pay Technical report: Labour Force Survey sample redesign <i>Note: the following articles appeared in <i>Labour Force, Australia</i> (cat. no. 6203.0).</i>
February 2003	Seasonal reanalysis of monthly labour force estimates
December 2002	Volatility of labour force estimates
October 2002	Measures of labour underutilisation
February 2002	Seasonal reanalysis of monthly labour force estimates
October 2001	Full-time and part-time employment
August 2001	Experimental estimates: labour force characteristics of Indigenous Australians
June 2001	Duration of unemployment: recent definitional changes
February 2001	Unemployment and supplementary measures of underutilised labour Seasonal reanalysis of monthly labour force estimates
May 2000	Status in employment data changes: correction
April 2000	Using the unemployment rate series to illustrate the seasonal adjustment process
February 2000	Seasonal reanalysis of monthly labour force estimates
December 1999	Why are there differences between two seasonally adjusted measures of Australian total employment?

APPENDIX 2 LIST OF ARTICLES *continued*

November 1999	Industry, occupation and status in employment data Labour force status and other characteristics of families
October 1999	Labour force projections: 1999–2016
April 1999	Introduction of updated standard error estimates
February 1999	Revisions to monthly labour force estimates
January 1999	Concordance between the first and second editions of the <i>Australian Standard Classification of Occupations (ASCO)</i> — revised

APPENDIX 3 RELATED PUBLICATIONS

<i>Title</i>	<i>cat. no.</i>	<i>Frequency</i>	<i>Reference period</i>
Labour force supplementary surveys			
Career Experience	6254.0	Discontinued	Nov 2002
Child Care	4402.0	Irregular	June 2005 reissue
Child Employment	6211.0	Irregular	Jun 2006
Education & Work	6227.0	Annual	May 2007
Employee Earnings, Benefits & Trade Union Membership	6310.0	Annual	Aug 2007
Forms of Employment	6359.0	Annual	Nov 2006
Job Search Experience	6222.0	Annual	Jul 2007
Labour Force Experience	6206.0	Biennial	Feb 2007
Labour Force Status & Other Characteristics of Families	6224.0.55.001	Annual	Jun 2007
Labour Force Status & Other Characteristics of Migrants	6250.0	Triennial	Nov 2004
Labour Mobility	6209.0	Biennial	Feb 2006
Locations of Work	6275.0	Irregular	Nov 2005
Multiple Jobholding(a)	6216.0	Discontinued	Aug 1997
Persons Not in the Labour Force	6220.0	Annual	Sep 2007
Retrenchment & Redundancy(b)	6266.0	Discontinued	Jul 2001
Underemployed Workers	6265.0	Annual	Sep 2006
Working Time Arrangements	6342.0	Triennial	Nov 2006
Multi purpose household surveys			
Barriers and Incentives to Labour Force Participation	6239.0	Biennial	Jul 2006 to Jun 2007
Retirement and Retirement Intentions(c)	6238.0	Biennial	Jul 2006 to Jun 2007
Work-Related Injuries(d)	6324.0	Irregular	2005–06
Sub-annual labour surveys			
Average Weekly Earnings	6302.0	Quarterly	Nov qtr 2007
Industrial Disputes	6321.0.55.001	Quarterly	Dec qtr 2007
Job Vacancies	6354.0	Quarterly	Feb qtr 2008
Labour Force	6202.0	Monthly	Feb 2007
Labour Force Characteristics of Aboriginal and Torres Strait Islander Australians, Experimental Estimates from the Labour Force Survey	6287.0	Annual	2006
Labour Price Index	6345.0	Quarterly	Dec qtr 2007
Wage & Salary Earners, Public Sector, Australia	6248.0.55.001	Quarterly	Dec qtr 2007
Other labour surveys			
Employee Earnings & Hours	6306.0	Biennial	May 2006
Employer Training Expenditure & Practices	6362.0	Irregular	2001–02
Labour Costs	6348.0.55.001	Irregular	2002–03
Confidentialised Unit Record Files (CURFs)			
Australians' Employment and Unemployment Patterns–CURF, 1994–1997	6286.0.30.001	Irregular	1994 to 1997
Australians' Employment and Unemployment Patterns, 1994–1997–Expanded CURF	6286.0.55.001	Irregular	1994 to 1997
Australians' Employment and Unemployment Patterns–Expanded CURF, Technical Paper	6286.0.55.002	Irregular	1994 to 1997
Child Care, Australia–Expanded CURF	4402.0.55.001	Irregular	Jun 2005
Child Care, Australia–Expanded CURF, Technical Manual	4402.0.55.002	Irregular	Jun 2005
Employment Arrangements and Superannuation, Australia–CURF	6361.0.55.001	Irregular	Apr to Jun 2000
Employment Arrangements and Superannuation, Australia–CURF, Technical Paper	6361.0.55.002	Irregular	Apr to Jun 2000
Labour Force Survey and Employee Earnings, Benefits and Trade Union Membership, Australia–Basic CURF	6202.0.30.001	Biennial	Aug 2006
Labour Force Survey and Employee Earnings, Benefits and Trade Union Membership, Australia – Basic CURF, Technical Paper	6202.0.30.002	Biennial	Aug 2006
Labour Force Survey and Employee Earnings, Benefits and Trade Union Membership, Australia–Expanded CURF	6202.0.30.003	Biennial	Aug 2006
Labour Force Survey and Labour Mobility, Australia–Basic CURF	6202.0.30.004	Irregular	Feb 2006
Labour Force Survey and Labour Mobility, Australia–Basic CURF, Technical Manual	6202.0.30.005	Irregular	Feb 2006
Survey of Education and Training, Australia–Basic CURF, Technical Manual	6278.0.55.001	Irregular	2005
Survey of Education and Training, Australia–Basic CURF	6278.0.55.002	Irregular	2005
Survey of Education and Training, Australia–Expanded CURF, Technical Manual	6278.0.55.003	Irregular	2005
Survey of Education and Training, Australia–Expanded CURF	6278.0.55.004	Irregular	2005
Survey of Income and Housing – Basic and Expanded CURFs, Technical Paper	6541.0	Irregular	2005–06

(a) Latest data available on request for July 2001.

(b) Related data available from Labour Mobility.

(c) Previously conducted as a labour force supplementary survey until 1997, data now collected as part of the Multi-Purpose Household Survey.

(d) Previously conducted as a labour force supplementary survey in 2000, data now collected as part of the Multi-Purpose Household Survey.

APPENDIX 3 RELATED PUBLICATIONS *continued*

<i>Title</i>	<i>cat. no.</i>	<i>Frequency</i>	<i>Latest issue</i>
Information papers and other reference material			
ABS Labour Market Statistics	6106.0.55.001	Irregular	2003
Australian System of National Accounts: Concepts, Sources & Methods	5216.0	Irregular	2000
Changes to ABS Measures of Employee Remuneration	6313.0	Irregular	2006
Changes to Labour Force Survey Products	6297.0	Irregular	2003
Estimating Average Annual Hours Worked	1352.0.55.077	Irregular	Jun 2006
Forthcoming Changes to Labour Force Statistics	6292.0	Irregular	2007
Labour Force Survey Sample Design	6269.0	Irregular	Nov 2007
Labour Force Survey Standard Errors	6298.0	Irregular	2005
Labour Force Survey Standard Errors, Data Cube, 2007	6298.0.55.001	Irregular	Nov 2007
Labour Price Index: Concepts, Sources & Methods	6351.0.55.001	Irregular	2004
Labour Statistics: Concepts, Sources & Methods	6102.0.55.001	Irregular	2007
Questionnaires Used in the Labour Force Survey	6232.0	Irregular	2004
Other publications			
Australian Economic Indicators	1350.0	Monthly	April 2008
Australian National Accounts: National Income, Expenditure & Product	5206.0	Quarterly	Dec qtr 2007
Australian Social Trends	4102.0	Annual	2007
Australian System of National Accounts	5204.0	Annual	2006–07
Australians' Employment & Unemployment Patterns: First Results	6286.0	Discontinued	1994 to 1997
Business Indicators	5676.0	Quarterly	Sep 2007
Census of Population & Housing: Selected Education & Labour Force Characteristics	2017.0	Five yearly	2001
Education & Training Indicators	4230.0	Irregular	2002
Employment Arrangements & Superannuation	6361.0	Irregular	Jun 2000
General Social Survey	4159.0	Irregular	2006
Government Benefits, Taxes & Household Income	6537.0	Irregular	2003–04
Household Income & Income Distribution	6523.0	Biennial	2005–06
Measures of Australia's Progress	1370.0	Biennial	2006
Regional Wage & Salary Earners — Electronic Publication	5673.0.55.001	Irregular	2003–04
Superannuation: Coverage & Financial Characteristics	6360.0	Irregular	Jun 2000
Voluntary Work	4441.0	Irregular	2006

GLOSSARY

Active steps to find work	Includes writing, telephoning or applying in person to an employer for work; answering an advertisement for a job; checking factory noticeboards or the touchscreens at Centrelink offices; being registered with Centrelink as a jobseeker; checking or registering with any other employment agency; advertising or tendering for work; and contacting friends or relatives.
Actual hours worked	The hours actually worked during the reference week, not necessarily hours paid for.
Adult employees	Adult employees are those employees 21 years of age or over and those employees who, although under 21 years of age, are paid at the full adult rate for their occupation.
Aggregate (actual) hours worked	The total number of hours a group of employed persons has actually worked during the reference week, not necessarily hours paid for.
Attending full-time education	Persons aged 15–24 years who were enrolled full-time at secondary school, high school, Technical and Further Education (TAFE) college, university, or other educational institution in the reference week.
Average compensation per employee	<i>National Accounts</i> . The total compensation of employees divided by the number of employees.
Average earnings (National Accounts basis)	See <i>average compensation per employee</i> .
Average hours worked	Aggregate hours worked by a group divided by the number of persons in that group.
Average weekly earnings	Average weekly earnings represent average gross (before tax) earnings of employees and do not relate to average award rates nor to the earnings of the 'average person'. Estimates of average weekly earnings are derived by dividing estimates of weekly total earnings by estimates of number of employees. For information about scope exclusions applying to employer surveys, refer to paragraph 43 of the Explanatory Notes.
Civilian population aged 15 years and over	All usual residents of Australia aged 15 years and over except members of the permanent defence forces, certain diplomatic personnel of overseas governments customarily excluded from census and estimated population counts, overseas residents in Australia, and members of non-Australian defence forces (and their dependants) stationed in Australia.
Commonwealth government employees	Employees of all departments, agencies and authorities created by or reporting to the Commonwealth Parliament. Those bodies run jointly by the Commonwealth Government and state governments are classified to Commonwealth.
Compensation of employees	<i>National Accounts</i> . The total remuneration, in cash or in kind, payable by enterprises to employees in return for work done by the employees during the accounting period. Compensation of employees comprises wages and salaries (in cash and in kind) and <i>employers' social contributions</i> . Compensation of employees is not payable in respect of unpaid work undertaken voluntarily, including the work done by members of a household within an unincorporated enterprise owned by the same household. Compensation of employees excludes any taxes payable by the employer on the wage and salary bill (e.g. payroll tax, fringe benefits tax). See <i>Australian System of National Accounts: Concepts, Sources and Methods</i> (cat. no. 5216.0) for further information.
Contributing family worker	A person who works without pay, in an economic enterprise operated by a relative.
Country of birth	Classified according to the <i>Standard Australian Classification of Countries (SACC)</i> (cat. no. 1269.0).
Couple families	A family based on two persons who are in a registered or de facto marriage and who are usually resident in the same household.
Dependants	All family members under 15 years, and all children aged 15–24 years attending full-time education (except those who have a partner or child of their own usually resident in the household).

GLOSSARY *continued*

Dependent child	Any child in a family under 15 years of age or aged 15–24 years who is attending full-time education (except those who have a partner or child of their own usually resident in the household).
Dependent student	A child who is 15–24 years of age, who is attending full-time education, and who has no partner or child of his or her own usually resident in the same household.
Discouraged jobseekers	Persons with marginal attachment to the labour force who wanted to work and were available to start work within the next four weeks but whose main reason for not actively looking for work was that they believed they would not find a job for any of the following reasons: <ul style="list-style-type: none"> ■ considered to be too young by employers ■ considered to be too old by employers ■ lacked necessary schooling, training, skills or experience ■ difficulties because of language or ethnic background ■ no jobs in their locality or line of work ■ no jobs available at all.
Duration of unemployment	<p>Under the redesigned LFS questionnaire, implemented in April 2001, the definition of duration of unemployment is the period of time from when an unemployed person began looking for work, until the end of the reference week; or the period of time since an unemployed person last worked in any job for two weeks or more, until the end of the reference week; whichever was the shorter period.</p> <p>Prior to April 2001, duration of unemployment was defined in the LFS as the period of time from when an unemployed person began looking for work, until the end of the reference week; or the period of time since an unemployed person last worked full-time for two weeks or more, until the end of the reference week; whichever was the shorter period.</p>
Employed	<p>Employed persons include all persons aged 15 years and over who, during the reference week:</p> <ul style="list-style-type: none"> ■ worked for one hour or more for pay, profit, commission or payment in kind in a job or business, or on a farm (comprising employees, employers and own account workers); or ■ worked for one hour or more without pay in a family business or on a farm (i.e. contributing family workers); or ■ were employees who had a job but were not at work and were: <ul style="list-style-type: none"> ■ away from work for less than four weeks up to the end of the reference week; or ■ away from work for more than four weeks up to the end of the reference week and received pay for some or all of the four week period to the end of the reference week; or ■ away from work as a standard work or shift arrangement; or ■ on strike or locked out; or ■ on workers' compensation and expected to return to their job; or ■ were employers or own account workers, who had a job, business or farm, but were not at work.
Employed full-time	See <i>full-time employed</i> .
Employed part-time	See <i>part-time employed</i> .
Employee	<i>Labour Force Survey and other household surveys.</i> A person who works for a public or private employer and receives remuneration in wages, salary, a retainer fee from their employer while working on a commission basis, tips, piece rates, or payment in kind, or a person who operates their own incorporated enterprise with or without hiring employees.

GLOSSARY *continued*

Employee continued	<i>Employer surveys.</i> Employees are wage and salary earners who received pay for any part of the reference period. For information about scope exclusions applying to employer surveys, refer to paragraph 43 of the Explanatory Notes.
Employee job	<p><i>Wage Price Index.</i> A job for which the occupant receives remuneration in wages, salary, payment in kind, or piece rates. All employee jobs in all employing organisations (except those excluded from all ABS labour employer surveys) are in scope of the WPI, except the following:</p> <ul style="list-style-type: none"> ■ 'non-maintainable' jobs (i.e. jobs that are expected to be occupied for less than six months of a year) ■ jobs for which wages and salaries are not determined by the Australian labour market (e.g. working proprietors of small incorporated enterprises, most employees of Community Development Employment Programs, jobs where the remuneration is set in a foreign country). <p>For information about scope exclusions applying to employer surveys, refer to paragraph 43 of the Explanatory Notes.</p>
Employer	<p><i>Labour Force Survey and other household surveys.</i> A person who operates their own unincorporated economic enterprise or engages independently in a profession or trade, and hires one or more employees.</p> <p><i>Employer surveys.</i> A business with one or more employees.</p>
Employers' social contributions	<i>National Accounts.</i> Contributions by employers to pension and superannuation funds; and premiums paid by employers to workers' compensation schemes for occupational injuries and diseases.
Extended labour force underutilisation rate	<p>The unemployed, plus the underemployed, plus two groups of marginally attached to the labour force:</p> <ul style="list-style-type: none"> (i) persons actively looking for work, not available to start work in the reference week, but available to start work within four weeks and (ii) discouraged jobseekers <p>as a percentage of the labour force augmented by (i) and (ii).</p>
Family	Two or more persons, one of whom is at least 15 years of age, who are related by blood, marriage (registered or de facto), adoption, step or fostering; and who are usually resident in the same household. The basis of a family is formed by identifying the presence of a couple relationship, lone parent-child relationship or other blood relationship. Some households will, therefore, contain more than one family.
Family reference person	In families which are not couple families or one-parent families, as defined, the family reference person is the eldest person in the household.
Former workers	Unemployed persons who have previously worked for two weeks or more but not in the last two years.
Full-time educational attendance	Persons aged 15–19 who, during the reference week were enrolled full-time at secondary or high schools, and those aged 15–24 who, during the reference week, were enrolled full-time at a Technical and Further Education (TAFE) college, university, or other tertiary educational institution.
Full-time employed	<i>Household surveys.</i> Persons employed full-time are those employed persons who usually worked 35 hours or more a week (in all jobs) and those who, although usually working less than 35 hours a week, worked 35 hours or more during the reference week.
Full-time employees	<i>Employer surveys.</i> Full-time employees are permanent, fixed term and casual employees who normally work the agreed or award hours for a full-time employee in their occupation and received pay for any part of the reference period. If agreed or award hours do not apply, employees are regarded as full-time if they ordinarily work 35 hours or more per week.

GLOSSARY *continued*

Gross domestic product (GDP)	<i>National Accounts.</i> The total market value of goods and services produced in Australia within a given period after deducting the cost of goods and services used up in the process of production but before deducting allowances for the consumption of fixed capital. Thus gross domestic product, as here defined, is at 'market prices'. It is equivalent to gross national expenditure plus exports of goods and services less imports of goods and services. See <i>Australian System of National Accounts: Concepts, Sources and Methods</i> (cat. no. 5216.0) for further information.
Gross mixed income (GMI)	<i>National Accounts.</i> The owners of unincorporated enterprises, or other members of their households, may work without receiving any wage or salary. Mixed income includes both <i>gross operating surplus</i> for the unincorporated enterprises and returns for the proprietors' own labour (akin to wages and salaries). See <i>Australian System of National Accounts: Concepts, Sources and Methods</i> (cat. no. 5216.0) for further information.
Gross operating surplus (GOS)	<i>National Accounts.</i> The amount of gross output remaining after subtracting costs incurred in producing that output, but before any deductions for consumption of fixed capital. See <i>Australian System of National Accounts: Concepts, Sources and Methods</i> (cat. no. 5216.0) for further information.
Household	A group of one or more persons in a private dwelling who consider themselves to be separate from other persons (if any) in the dwelling, and who make regular provision to take meals separately from other persons, i.e. at different times or in different rooms. Lodgers who receive accommodation but no meals are treated as separate households. Boarders who receive both accommodation and meals are not treated as separate households. A household may consist of any number of families and non-family members.
Industrial dispute	An industrial dispute is defined as a state of disagreement over an issue or group of issues between an employer and its employees, which results in employees ceasing work. Industrial disputes comprise strikes, which are a withdrawal from work by a group of employees; and lockouts, which are a refusal by an employer or group of employers to permit some or all of their employees to work.
Industry	An industry is a group of businesses or organisations that perform similar sets of activities in terms of the production of goods and services. Industry is classified according to the <i>Australian and New Zealand Standard Industrial Classification (ANZSIC), 1993</i> (cat. no. 1292.0). The industry assigned to an employed person is the industry of the organisation in which the person's main job is located. Unemployed persons who had worked for two weeks or more in the last two years are classified according to the industry of their most recent job.
Job leavers	Unemployed persons who have worked for two weeks or more in the past two years and <i>left that job voluntarily</i> – that is, because (for example): of unsatisfactory work arrangements/pay/hours; the job was a holiday job or they left the job to return to studies; or their last job was running their own business and they closed down or sold that business for reasons other than financial difficulties.
Job losers	Unemployed persons who have worked for two weeks or more in the past two years and <i>left that job involuntarily</i> : that is, they were laid off or retrenched from that job; left that job because of their own ill-health or injury; the job was seasonal or temporary; or their last job was running their own business and the business closed down because of financial difficulties.
Job vacancy	A job vacancy is an employee job available for immediate filling on the survey reference date and for which recruitment action has been taken. Recruitment action includes efforts to fill vacancies by advertising, by factory notices, by notifying public or private employment agencies or trade unions and by contacting, interviewing or selecting applicants already registered with the enterprise or organisation. Excluded are vacancies: <ul style="list-style-type: none"> ■ for jobs which became vacant on the survey date and were filled that same day ■ for jobs of less than one day's duration

GLOSSARY *continued*

Job vacancy <i>continued</i>	<ul style="list-style-type: none"> ■ to be filled by persons already hired, or by promotion or transfer of existing employees ■ to be filled by employees returning from paid or unpaid leave or after industrial dispute(s) ■ not available for immediate filling on the survey reference date ■ for work to be carried out by contractors ■ for which no recruitment action has been taken ■ where a person has been appointed but has not yet commenced duty ■ to be filled by staff from contract labour agencies ■ for jobs available only to persons already employed by the enterprise or organisation. <p>For information about scope exclusions applying to employer surveys, refer to paragraph 43 of the Explanatory Notes.</p>
Labour force	The labour force is the labour supply available for the production of economic goods and services in a given period, and is the most widely used measure of the economically active population. Persons in the labour force are classified as either employed or unemployed according to their activities during the reference period by using a specific set of priority rules.
Labour force status	A classification of the civilian population aged 15 years and over into employed, unemployed or not in the labour force, as defined. The definitions conform closely to the international standard definitions adopted by the International Conferences of Labour Statisticians.
Labour force underutilisation rate	The unemployed plus the underemployed, as a percentage of the labour force.
Local government employees	Employees of municipalities and shires and other local authorities created by or subject to the provisions of local government legislation, such as county councils in New South Wales.
Lone parent	A person who has no spouse or partner present in the household but who forms a parent-child relationship with at least one dependent or non-dependent child usually resident in the household.
Lone person	A person who makes provision for their food and other essentials for living, without combining with any other person to form part of a multi-person household. They may live in a dwelling on their own or share a dwelling with another individual or family.
Long-term unemployed	Persons unemployed for 12 months or more. See <i>duration of unemployment</i> for details of the calculation of duration of unemployment.
Long-term unemployment rate	The number of long-term unemployed persons expressed as a percentage of the labour force.
Marginal attachment to the labour force	<p>Persons who were not in the labour force in the reference week, wanted to work, and:</p> <ul style="list-style-type: none"> ■ were actively looking for work but did not meet the availability criteria to be classified as unemployed or ■ were not actively looking for work but were available to start work within four weeks or could start work within four weeks if child care was available. <p>The criteria for determining those in the labour force are based on activity (i.e. working or looking for work) and availability to start work during the reference week. The criteria associated with marginal attachment to the labour force, in particular the concepts of wanting to work and reasons for not actively looking for work, are more subjective. Hence, the measurement against these criteria is affected by the respondent's own interpretation of the concepts used. An individual respondent's interpretation may be affected by their work aspirations, as well as family, economic and other commitments.</p>
Marital status	See <i>social marital status</i> .

GLOSSARY *continued*

Mean age	The sum of the ages of all the persons in a group, divided by the total number of persons in that group.
Mean duration of unemployment	The sum of the duration of unemployment of all the unemployed persons in a group, divided by the total number of unemployed persons in that group.
Median age	The age which divides a group of persons into two equal groups: one comprising persons whose age is above the median; and the other, persons whose age is below it.
Median duration of unemployment	The duration which divides unemployed persons into two equal groups: one comprising persons whose duration of unemployment is above the median; and the other, persons whose duration is below it.
Non-dependent child	A child of a couple or lone parent usually resident in the household, aged over 15 years and who is not a dependent student aged 15–24 years, and who has no partner or child of their own usually resident in the household.
Non-family member	A person who is not related to any other member of the household in which they are living.
Not in the labour force	Persons who were not classified as employed or unemployed.
Occupation	An occupation is a collection of jobs that are sufficiently similar in their main tasks to be grouped together for the purposes of classification. Occupation is classified according to the <i>ASCO Australian Standard Classification of Occupations, Second Edition</i> (cat. no. 1220.0). The occupation assigned to an employed person relates to the person's main job. Unemployed persons who had worked for two weeks or more in the last two years are classified according to the occupation of their most recent job.
One-parent family	A family consisting of a lone parent with at least one dependent or non-dependent child (regardless of age) who is also usually resident in the household.
Ordinary time earnings	See <i>weekly ordinary time earnings</i> .
Original series	Estimates produced directly from the survey data, before seasonal adjustment or trend estimation takes place.
Other family	Related individuals residing in the same household who do not form a couple or parent-child relationship with any other person in the household and are not attached to a couple or one parent family in the household. If two brothers, for example, are living together and neither is a spouse, a lone parent or a child, then they are classified as other family.
Overtime earnings	See <i>weekly overtime earnings</i> .
Own-account worker	A person who operates his or her own unincorporated economic enterprise or engages independently in a profession or trade, and hires no employees.
Participation rate	The labour force participation rate for any group within the population is the labour force component of that group, expressed as a percentage of the population in that group.
Part-time employed	<i>Household surveys.</i> Persons employed part-time are those employed persons who usually worked less than 35 hours a week (in all jobs) and either did so during the reference week, or were not at work in the reference week.
Reason for leaving last job	Unemployed persons who had worked for two weeks or more in the past two years classified by whether they left that job voluntarily, that is, job leavers; or left that job involuntarily, that is, job losers.
Seasonally adjusted series	A time series of estimates with the estimated effects of normal seasonal variation removed. See paragraphs 7–13 of the Explanatory Notes for more detail.

GLOSSARY *continued*

Social marital status	Social marital status is the relationship status of an individual with reference to another person who is usually resident in the household. A marriage exists when two people live together as husband and wife, or partners, regardless of whether the marriage is formalised through registration. Individuals are, therefore, regarded as married if they are in a de facto marriage, or if they are living with the person to whom they are registered as married.
State capital cities	The areas determining the six state capital cities are the Statistical Divisions for those capital cities defined in the <i>Statistical Geography: Volume 1 – Australian Standard Geographical Classification (ASGC)</i> (cat. no. 1216.0).
State government employees	Employees of all State government departments and authorities created by, or reporting to, State Parliaments, including organisations for which the Commonwealth has assumed financial responsibility. Following self-government, the Northern Territory and the Australian Capital Territory administrations have been classified to State Governments. Employees of State Governments employed interstate are included in the estimates of the State in which they are based.
Status in employment	Employed persons classified by whether they were employees, employers, own account workers or contributing family workers.
Total earnings	See <i>weekly total earnings</i> .
Total hourly rates of pay index excluding bonuses	<i>Wage Price Index</i> . This index measures quarterly change in a weighted combination of ordinary time and overtime hourly rates of pay. See <i>Labour Price Index, Australia</i> (cat. no. 6345.0) for more information.
Trend series	A smoothed seasonally adjusted series of estimates. See paragraphs 7–13 of the Explanatory Notes for more detail.
Underemployed workers	Underemployed workers are employed persons who want, and are available for, more hours of work than they currently have. They comprise: <ul style="list-style-type: none"> ■ persons employed part-time who want to work more hours and are available to start work with more hours, either in the reference week or in the four weeks subsequent to the survey ■ persons employed full-time who worked part-time hours in the reference week for economic reasons (such as being stood down or insufficient work being available). It is assumed that these people wanted to work full-time in the reference week and would have been available to do so.
Underemployment rate	The number of underemployed workers expressed as a percentage of the labour force.
Unemployed	Persons aged 15 years and over who were not employed during the reference week, and <ul style="list-style-type: none"> ■ had actively looked for full-time or part-time work at any time in the four weeks up to the end of the reference week and were available for work in the reference week, or ■ were waiting to start a new job within four weeks from the end of the reference week and could have started in the reference week if the job had been available then.
Unemployed looking for first full-time job	Unemployed persons looking for full-time work who had never worked full-time for two weeks or more.
Unemployed looking for first job	Unemployed persons who had never worked for two weeks or more.
Unemployed looking for full-time work	Unemployed persons who: <ul style="list-style-type: none"> ■ actively looked for full-time work, or ■ were waiting to start a new full-time job.
Unemployed looking for part-time work	Unemployed persons who: <ul style="list-style-type: none"> ■ actively looked for part-time work only, or ■ were waiting to start a new part-time job.
Unemployment rate	The number of unemployed persons expressed as a percentage of the labour force.

GLOSSARY *continued*

Unemployment to population ratio	For any group, the number of unemployed persons expressed as a percentage of the civilian population aged 15 and over in the same group.
Usual hours worked	The hours usually worked per week by an employed person.
Wage and salary earners	See <i>employee</i> .
Weekly ordinary time earnings	Weekly ordinary time earnings refers to one week's earnings of employees for the reference period attributable to award, standard or agreed hours of work, calculated before taxation and any other deductions (e.g. superannuation, board and lodging) have been made. Included are piecework payments and one week's portion of regular production and task bonuses and commissions. Excluded are overtime payments and payments not related to the reference period, e.g. bonus payments for earlier periods of work.
Weekly overtime earnings	Weekly overtime earnings refers to payment for hours worked in the reference week in excess of award, standard or agreed hours of work, calculated before taxation and any other deductions (e.g. superannuation) have been made.
Weekly total earnings	Weekly total earnings of employees is equal to weekly ordinary time earnings plus weekly overtime earnings.
Working days lost	Refers to working days lost by employees directly and indirectly involved in the dispute.
Working days lost per thousand employees	Calculated for a quarterly period by dividing the total number of working days lost in the period by the total number of employees in the Australian labour force in the period (obtained from the ABS Labour Force Survey) and multiplying by 1,000.

FOR MORE INFORMATION . . .

INTERNET

www.abs.gov.au the ABS website is the best place for data from our publications and information about the ABS.

INFORMATION AND REFERRAL SERVICE

Our consultants can help you access the full range of information published by the ABS that is available free of charge from our website. Information tailored to your needs can also be requested as a 'user pays' service. Specialists are on hand to help you with analytical or methodological advice.

PHONE

1300 135 070

EMAIL

client.services@abs.gov.au

FAX

1300 135 211

POST

Client Services, ABS, GPO Box 796, Sydney NSW 2001

FREE ACCESS TO STATISTICS

All statistics on the ABS website can be downloaded free of charge.

WEB ADDRESS

www.abs.gov.au



2610500004088

ISSN 1446 540X

RRP \$35.00